

QWC MEETING (MA, KW, TB, WJONL, GL, MH, RS)

BOB REILLY 2/11/2011

1. 100% FSL

2. HOW HARD & FAST ARE RELEASES?

3. DAM SAFETY REGULATION → FLOOD MANUAL + COMMS PROTOCOL

→ SEWATER RIGHT TO

ASK REGULATOR TO CHANGE

→ TIGHTLY DEFINED MANUAL

1. INTEGRITY OF STRUCTURE

2. DOWNSTREAM PROPERTY IMPACT

3. FSL THRESHOLD

4. ENVIRONMENT ETC

4. EARLY WORK BY SEW WATER - NEED 30% - 40%

REDUCTION TO IMPACT 3M AT PORT OFFICE

5. INVOLVE COMMS PEOPLE

1. QWC SUBMISSIONS • INQUIRY → FACTS

→

Key Information

- Maximum System Take allowed = 450,000 ML/a
- Current Demand = 300,000 ML/a
- Current Additional Available = 150,000 ML/a
- Total Water Supply of Wivenhoe Dam = 1,165,000 ML (EL.67m) 100%
- Flood Capacity of Wivenhoe Dam = 1,450,000 ML (EL77.5m) 200% - FUSE BLOW
OVER TOP OF WALL 330%

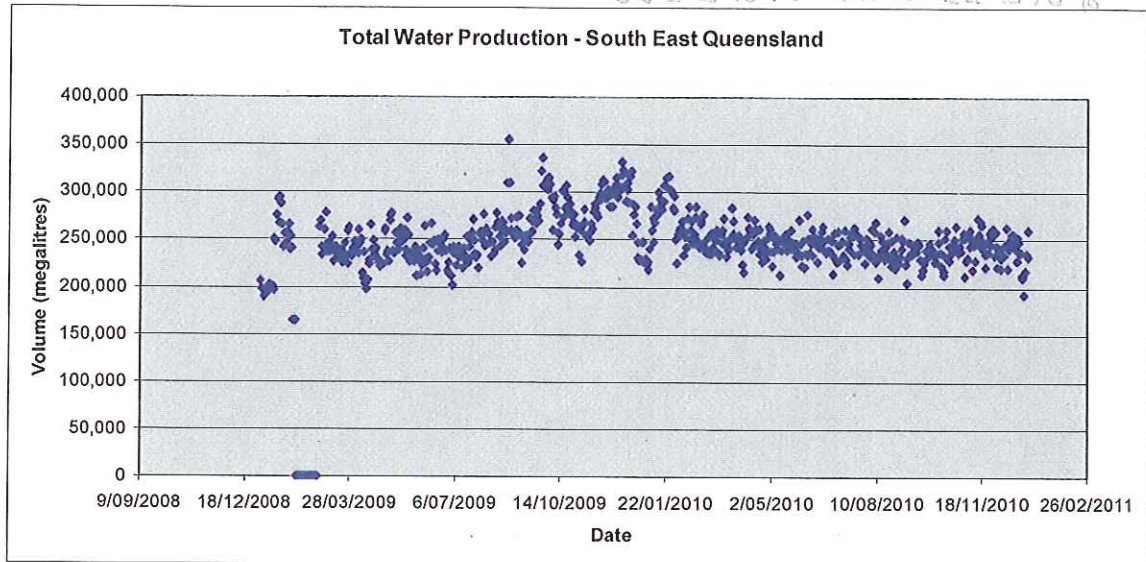
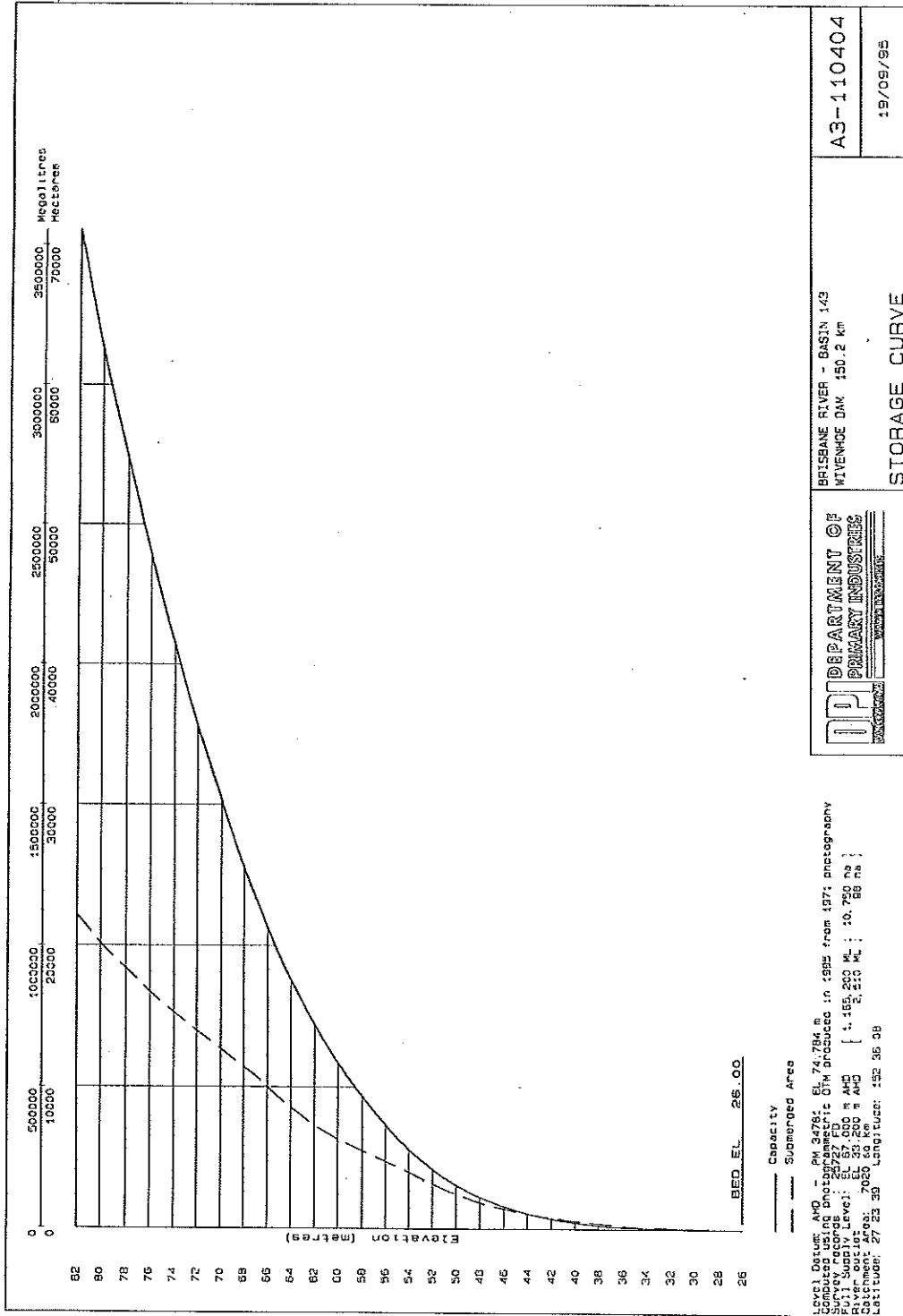


Table of Storage Reduction for Wivenhoe Dam

% Reduction (from Full Supply)	Volume of Water Released (ML)	Volume Remaining at Wivenhoe (from Full supply)	Height Reduction (m) (from Full Supply)
5	58,250	1,106,750	0.25
10	116,500	1,048,500	0.8
12.9	150,000	1,015,000	1.5
15	174,750	990,250	1.75
20	233,000	932,000	2.33
25	291,250	873,750	3.0
30	349,500	815,500	3.75



Key Information

- Maximum System Take allowed = 450,000 ML/a
- Current Demand = 300,000 ML/a
- Current Additional Available = 150,000 ML/a

- Total Water Supply of Wivenhoe Dam = 1,165,000 ML (EL 67m)
- Flood Capacity of Wivenhoe Dam = 1,450,000 ML (EL77.5m)

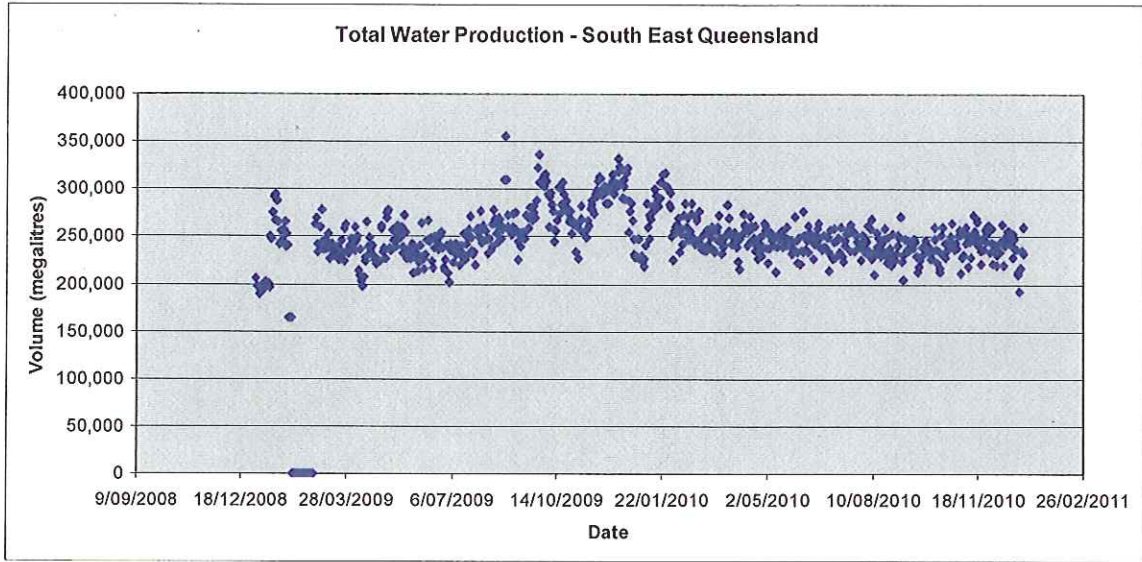
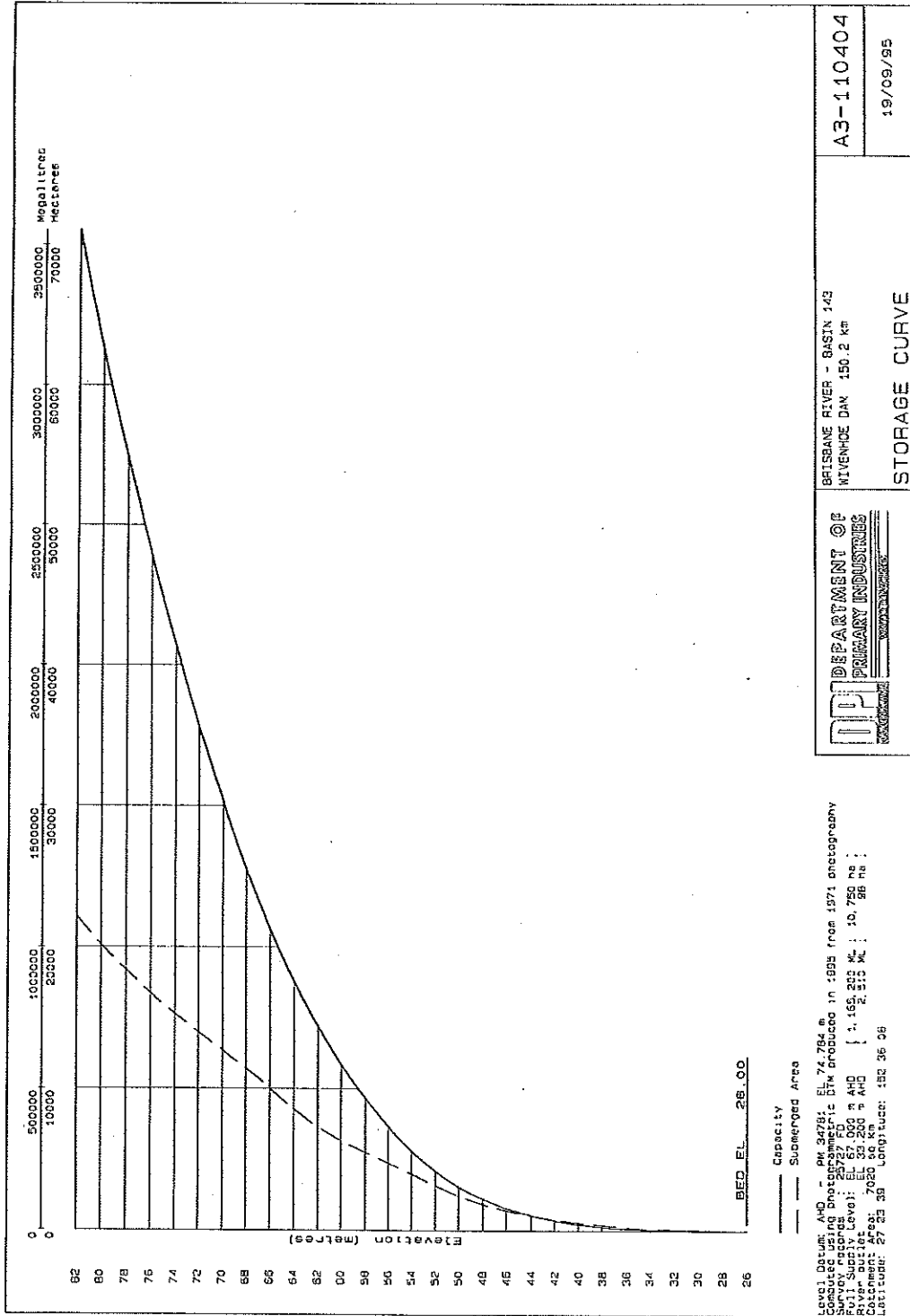
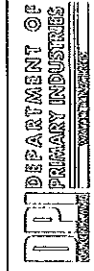


Table of Storage Reduction for Wivenhoe Dam

% Reduction (from Full Supply)	Volume of Water Released (ML)	Volume Remaining at Wivenhoe (from Full supply)	Height Reduction (m) (from Full Supply)
5	58,250	1,106,750	0.25
10	116,500	1,048,500	0.8
12.9	150,000	1,015,000	1.5
15	174,750	990,250	1.75
20	233,000	932,000	2.33
25	291,250	873,750	3.0
30	349,500	815,500	3.75



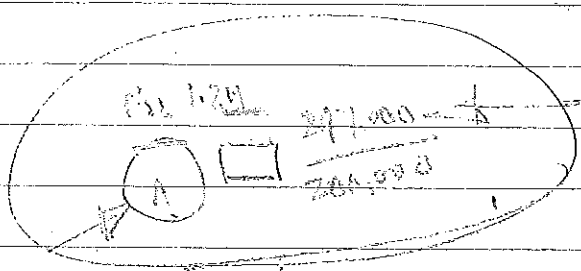
Level Datum: AHD
 Computed using photogrammetric data produced in 1995 from 1971 photogrammetry
 PVI Submersion Level: EL 67.000 m AHD
 River Surface Level: EL 70.200 m AHD
 Comments: Area: 7020.00 Ha
 Location: 27 25 38 Longitude: 152 35 26



BRISBANE RIVER - BASIN 143
 WIVENHOE DAM 150.2 Ma

STORAGE CURVE

A3-110404
 19/09/95



A

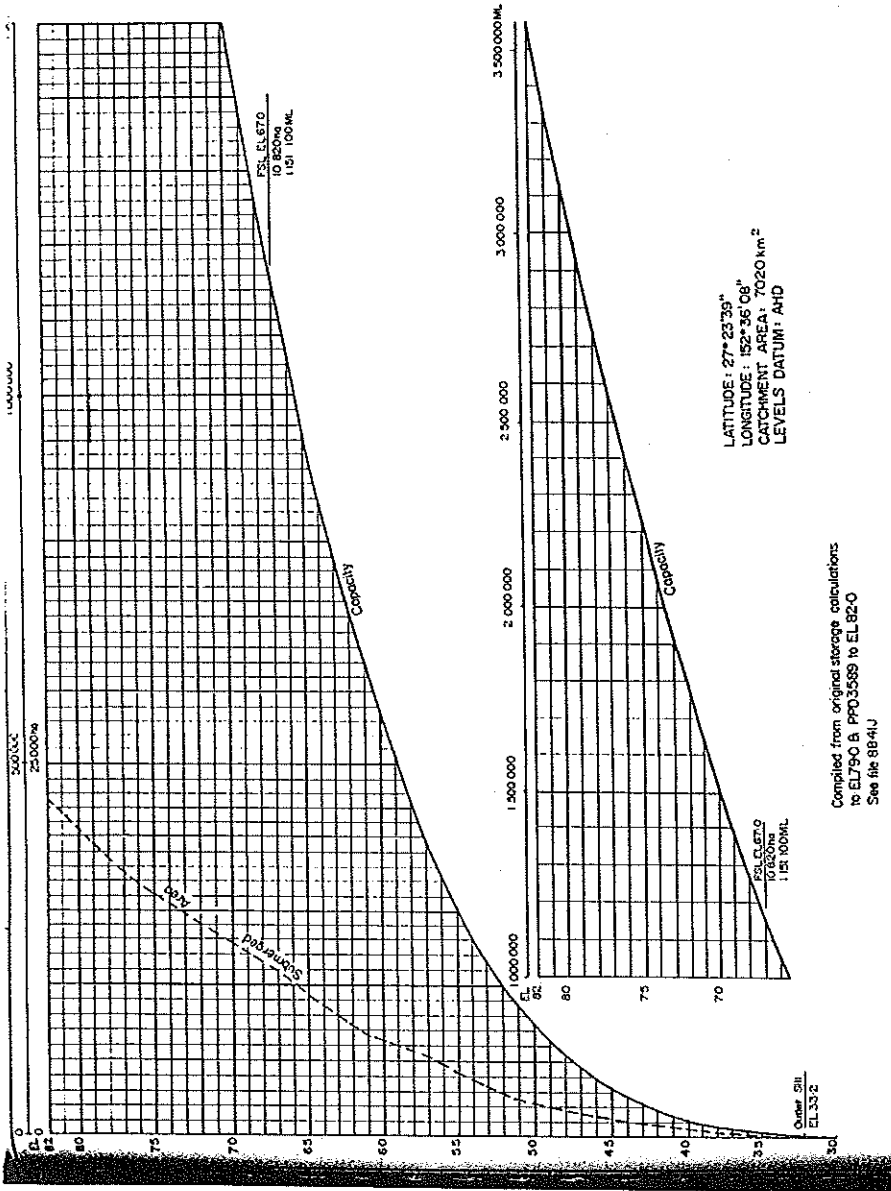
LOS YIELD
PEN

A

$150 - 270$
 300
 $150 - 150$

30% → 450 →

10%



LATITUDE: 27° 23' 39"
 LONGITUDE: 152° 36' 08"
 CATCHMENT AREA: 7020 km²
 LEVELS DATUM: AHD

Compiled from original storage calculations
 to EL750 & PFD3568 to EL 820
 See file 8841J

EL	Sub Area (ha)	Capacity (ML)
232	0	0
3048	45	1 630
3353	100	3 790
3658	210	8 470
3962	510	19 500
4267	850	40 200
4572	1280	72 600
4877	1870	120 600
5182	2720	190 600
5486	4 100	294 500
5791	5 500	440 800
6096	6 800	626 400
6401	8 640	859 900
6700	10 820	1 151 100
7010	12 900	1 518 800
7315	14 860	1 942 100
7620	16 950	2 427 200
7900	19 300	2 938 200
8000	20 500	3 138 900
8100	21 520	3 348 600
8200	22 530	3 568 800

DESIGN		DRAFTING	
PREP	CKD	DR	DR
SUPV	SUPV	CKD	SUPV
SUBMITTED		APPROVED/DATE	
DATE	REMARKS	ZONE	CKD PSD
25.5.84	C Curve extended, redrawn		
RECOMMENDED		APPROVED/DATE	
		BRISBANE RIVER 150.2km WIVENHOE DAM - STORAGE CURVES	
CONTRACT NUMBER		DRAWING NUMBER	
		A3-44067	

Rev EL 23-2

REVISION

