

[REDACTED]

From: [REDACTED]
Sent: Monday, 31 January 2011 1:00 PM
To: [REDACTED]
Cc: [REDACTED]
Subject: Emailing: Splityard Levels and Unit Ops 6 Jan to 16 Jan

Attachments: Splityard Levels and Unit Ops 6 Jan to 16 Jan.PDF



Splityard Levels and
Unit Ops ...

Dave, this gives you the picture for unit operations from 6th January to 16th January - essentially there was one pump run and two generation runs.

W2 Pumped 03:00 to 07:15 on Monday 10th

W1 Generated 12:30 to 17:00 on Monday 10th

W2 Generated 11:09 to 19:00 on Tuesday 16th I'll get the graph of both dams over the same period for you tomorrow.

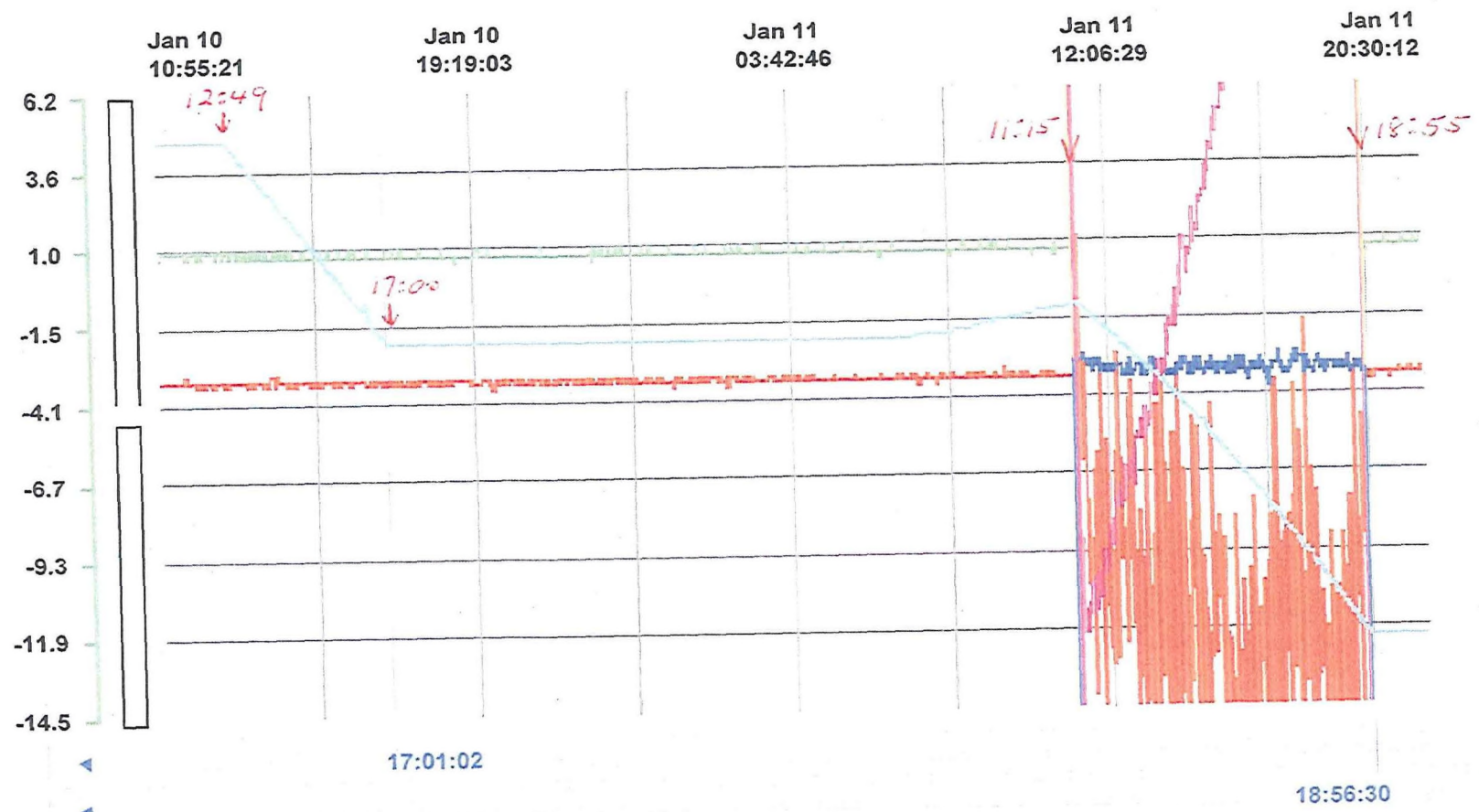
Regards, Trev

The message is ready to be sent with the following file or link attachments:

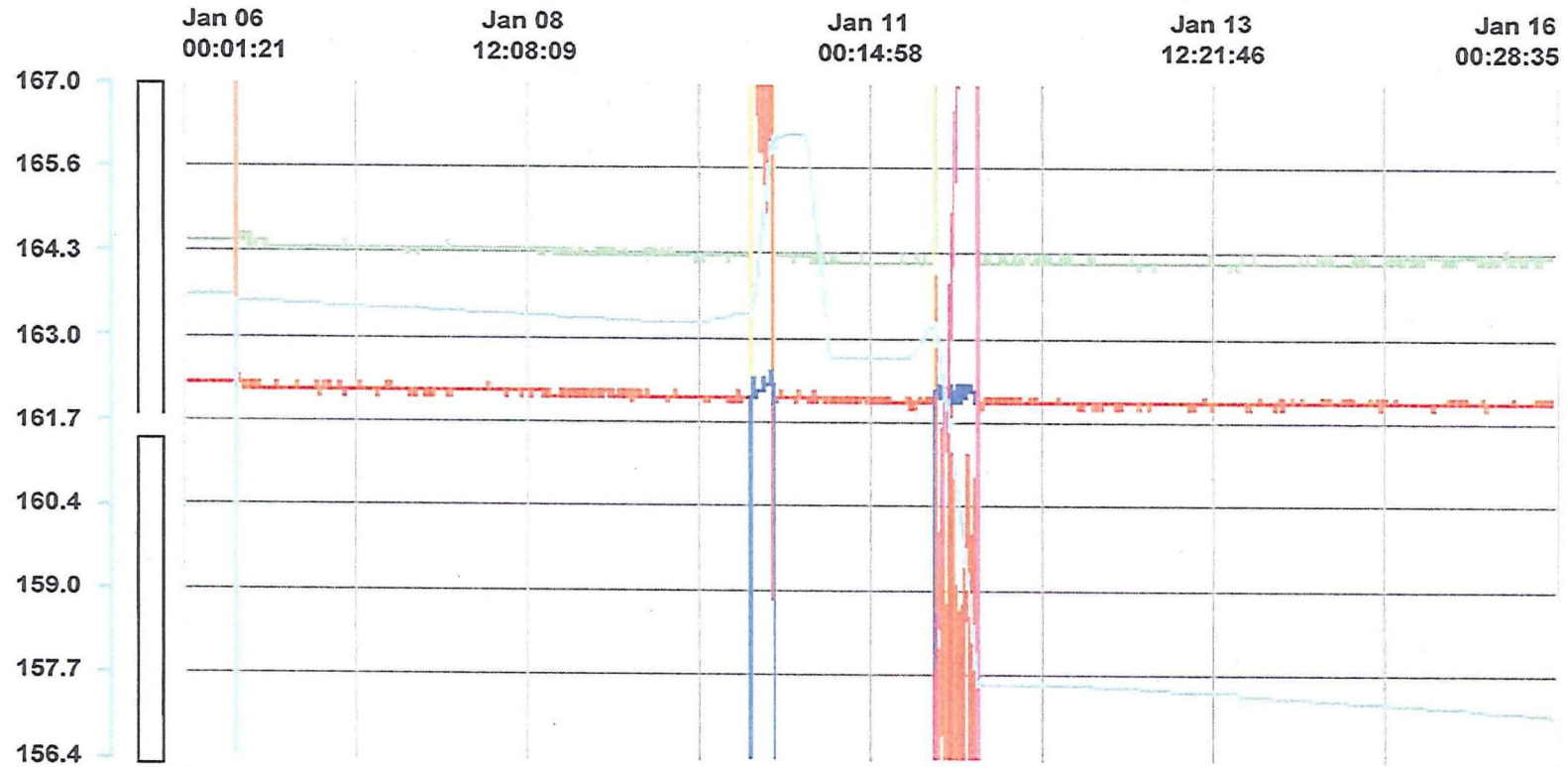
Splityard Levels and Unit Ops 6 Jan to 16 Jan

Note: To protect against computer viruses, e-mail programs may prevent sending or receiving certain types of file attachments. Check your e-mail security settings to determine how attachments are handled.

NATURAL INFLUX
162.7 → 163.3



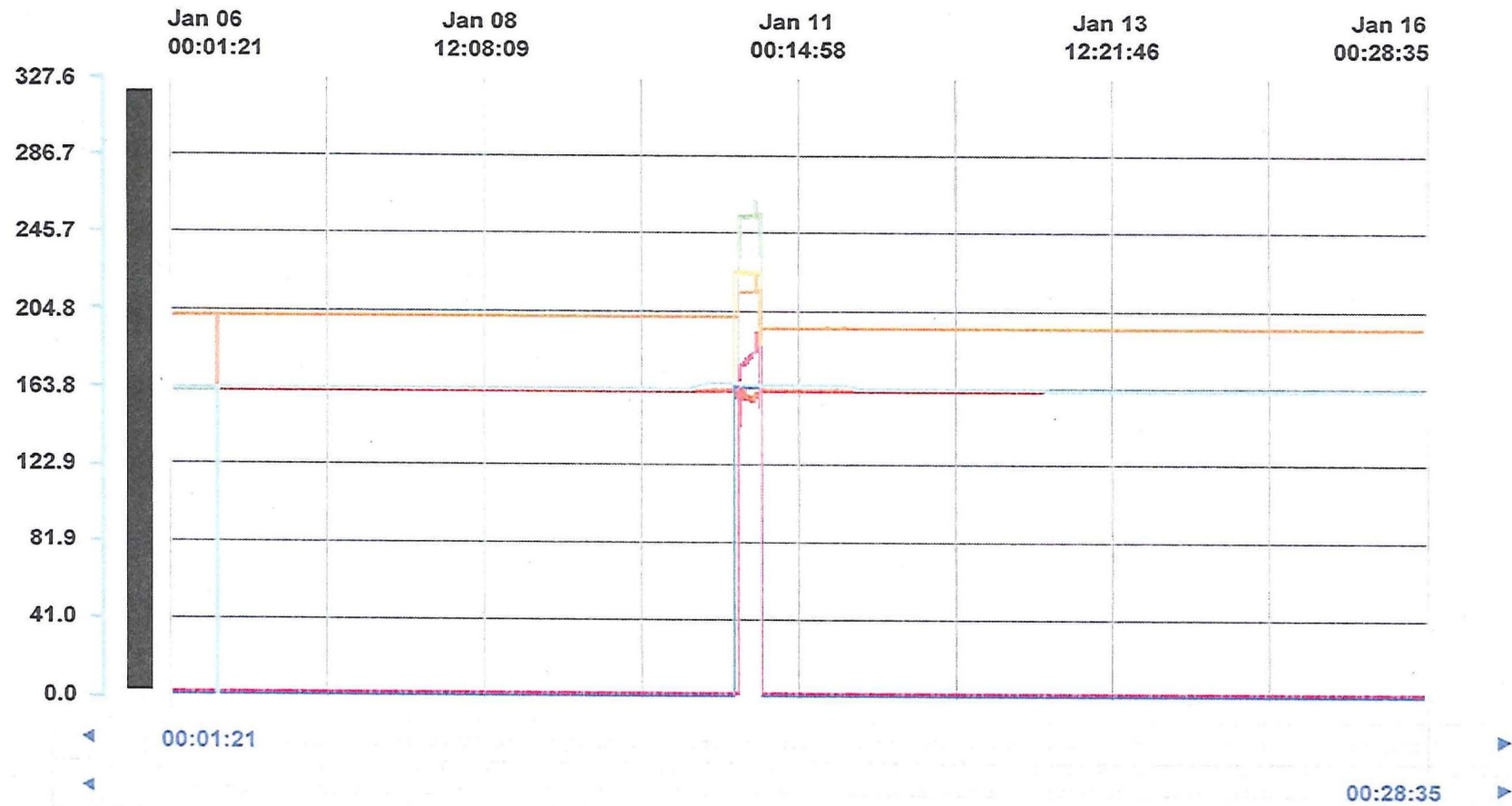
W2GEN1024\Actual	Unit Power	0.8	0.6	MW
W2GEN1025\Actual	Unit Reactive Power	-3.1	-3.5	MVAr
W2GEN1026\Actual	Unit Voltage	-0.0	0.3	kV
W2TRB1035\Actual	Unit Load Set Point	164.8	141.8	MW
W2TRB1037\Actual	Unit Speed	-1.8	90.6	rpm
W2TRB1020\Position	Guide Vane	-0.2	-0.2	%
W0SPY1003\Actual	Splityard Pondage Water Level 2	162.7	157.6	m
W0SPY1001\Actual	Differential Water Level 2	89.8	82.6	m



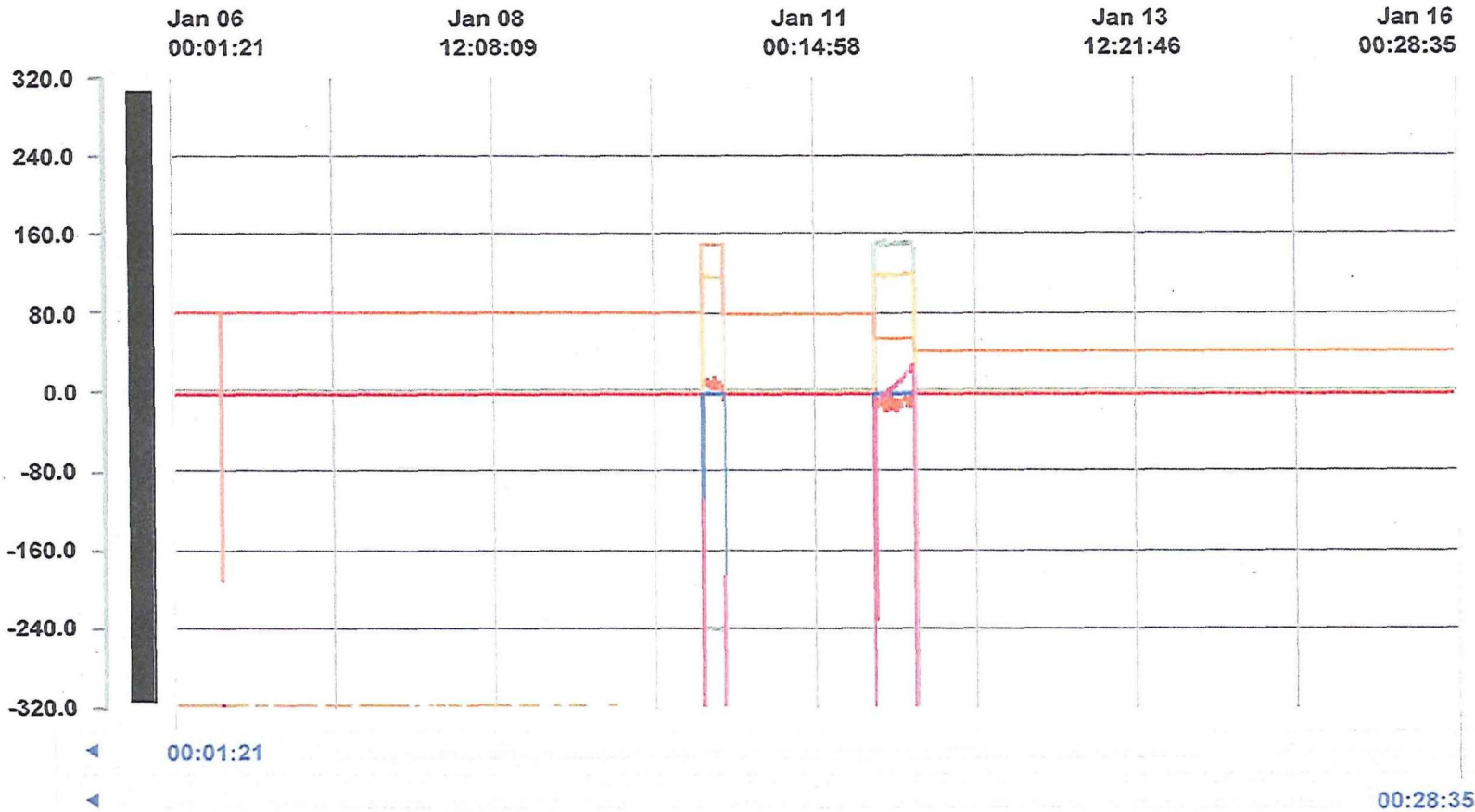
◀ 00:01:21

00:28:35 ▶

—	W2GEN1024\Actual	Unit Power	0.0	0.0	MW
—	W2GEN1025\Actual	Unit Reactive Power	0.0	0.0	MVAr
—	W2GEN1026\Actual	Unit Voltage	0.0	0.0	kV
—	W2TRB1035\Actual	Unit Load Set Point	0.0	0.0	MW
—	W2TRB1037\Actual	Unit Speed	0.0	0.0	rpm
—	W2TRB1020\Position	Guide Vane	0.0	0.0	%
—	W0SPY1003\Actual	Splityard Pondage Water Level 2	0.0	0.0	m
—	W0SPY1001\Actual	Differential Water Level 2	0.0	0.0	m



—	W1GEN1024\Actual	Unit Power	0.0	0.0	MW
—	W1GEN1025\Actual	Unit Reactive Power	0.0	0.0	MVAr
—	W1GEN1026\Actual	Unit Voltage	0.0	0.0	kV
—	W1TRB1035\Actual	Unit Load Set Point	0.0	0.0	MW
—	W1TRB1037\Actual	Unit Speed	0.0	0.0	rpm
—	W1TRB1020\Position	Guide Vane	0.0	0.0	%
—	W0SPY1002\Actual	Splityard Pondage Water Level 1	0.0	0.0	m
—	W0SPY1000\Actual	Differential Water Level 1	0.0	0.0	m



—	W2GEN1024\Actual	Unit Power	0.0	0.0	MW
—	W2GEN1025\Actual	Unit Reactive Power	0.0	0.0	MVAr
—	W2GEN1026\Actual	Unit Voltage	0.0	0.0	kV
—	W2TRB1035\Actual	Unit Load Set Point	0.0	0.0	MW
—	W2TRB1037\Actual	Unit Speed	0.0	0.0	rpm
—	W2TRB1020\Position	Guide Vane	0.0	0.0	%
—	W0SPY1003\Actual	Splityard Pondage Water Level 2	0.0	0.0	m
—	W0SPY1001\Actual	Differential Water Level 2	0.0	0.0	m