

1<sup>st</sup> March 2011

Brian A. Richardson

A Submission – By Interest for Action  
For the Queensland Commission of Enquiry  
Floods and Cyclones.

Attention:- Justice Ann Holmes

The State of Queensland

History:- Prior to 1974 was seen as a growth State by those seeking fresh job opportunities, with futures guaranteed by affordable homes and a life style molded by its Weather and Political Determination through Expansions and Development.

In fact Queensland was leading all States by the desires of those looking for an affordable retirement and Baby Boomers pursuing security of investment for themselves and their children. All Properties were sold in the Suburbs, with access to sewerage, town water, electricity and gas and all suburbs were gauged on sale by wages earned in simple terms housing was available to most workers.

The Government provided the opportunity for increase power generation across the South East Corner and addressed the water demand with a planned growth of Dams to meet the current and future needs.

Tragically in 1974 at the height of its inception to change Queensland and the Northern N.S.W. were exposed to a deluge of rain not previously seen by most and caught not only the Government by surprise but those who were responsible to monitor and provide the input necessary to guide and direct the decision makers on the course most necessary to meet this challenge.

The awakening of realization of impending disaster was ad-hok and little or no precaution was perceived by a direction to release a volume of water from the Wivenhoe Dam to a flooding tide in the New Year cycle which would take Brisbane River thirty feet above its normal height.

I was caught at Lismore in northern N.S.W. after escaping 24 hours of the worst non stop deluge in Byron Bay, the Caravan Park was evacuated after a large tree fell on tent campers killing the person inside.

In Lismore I was welcomed into the Local Motel with adulation and the support of the owner to take a break for the afternoon. Six hours later my vehicle was used as a gauge to measure the water depth.

In Brisbane the story was the same for everybody affected, the city on both sides went under and the rest is History.

The History of Pain and Despair was vulcanised into the Memories of all those who experienced it.

To ensure this would never be repeated, a full study on both sides of the river show those areas of total immersion be rezoned for Parks, Parking areas, Play grounds and Industrial areas, where applicable.

In Newstead and Hamilton it was already determined to wind down the Shipping Terminals of P & O, Patricks and A.N.L. to move to the New Port of Fisherman Islands. The Newstead Terminal during the flood saw the river to ten feet higher than the Crane Drivers cabin (about thirty two feet) and the ship The Bass Trader swept down river and under the Story Bridge breaking all its antenna's and forced for five hours to tie off in the Botanical Gardens waiting for a Tide Change.

These changes in 1974 and 1975 saw through the 'White Shoe Brigade' a new direction by the State Government in pursuing areas north and south of the city to accommodate those displaced by the floods.

Bill Bowden promoted the area of Aspley that was so successful it generated growth along the entire Rail Corridor opening up Bald Hills, Kallangur and Narangba with retirement opportunities at Deception Bay and Redcliffe linked to Sandgate by Bridge.

The Gold coast was targeted and with the promise of a four lane highways in both north and south direction linked by a super Bridge called The Gateway made areas such as Beenleigh, Logan, Loganlea and so many others very attractive for city workers.

From 1974 to 1984 the Government, to meet the challenge of City Transport, replaced its City Rail System from outdated Wooden Carriages to a Modern Fleet of fast Electric Carriages. The Port however failed to meet the challenges of change and with the closure of the A.N.L. Coastal Service (6 Trader ships on weekly calls to Brisbane with deliveries to the heart of the City from Tasmania, Melbourne, Sydney and onto Townsville and Darwin, to all domestic warehousing in Nudgee Road and surrounding areas.)

In 1984/85 the Government promoted Expo and I applied for a 40 hectare site for ship exchange and domestic transfer in 1987 (Taken over by the Port of Brisbane). This would have given the State a further chance to pursue southern domestic freight by rail through a program called E.Q.U.I.S. This additional rail interchange was offered to A.N.L. by the Premier Joh Bjelke Petersen through me and was rejected by A.N.L. on lack of funding. Thus all Freight to and from the south east corner was doomed to Trucks.

The Land on both sides of the river as determined by Government looked at for New Development and it was considered the low land on the South Side should be used to Host Expo 88 and on completion revert back to open space and park land.

Land on the North Side would further be developed to assist the New Airport and Sea Port. A product of the port development was a Truck called the 'B' Double from America

introduced by C.E.O. Kerry Noyes of Luya Julius and it was this vehicle that revolutionized interstate transport till today. (as approved by Minister Don Lane.)

Lindsay Fox and other groups – on price captured the market of Interstate and International repositioning leaving Rail and Shipping out in the cold.

With fuel rates at 33cents super and 28cents for diesel the Federal Government was forced to rebuild the Pacific Highway from Melbourne to Brisbane and beyond. This huge influx of trucks generated from the southern side of the Gateway to the Port, Nudgee Road and those new industrial estates replacing the flood plains of Rocklea, Wacol and others. The cotton growers of northern N.S.W. and the abattoirs expanding in the South East Corner generated a super wealth for Brisbane, along with the Japanese investment encouraged by the Premier Joh Bjelke-Petersen saw huge investment into our Mineral and Food Products, which also attracted expansion into the American, Chinese, Indian and Asian Markets.

In 1987 with the Resignation of the Premier Joh Bjelke Petersen through age, and the pressure of others demanding a Leaders Roll saw a demise of Government in a continued expansion of the State and finally a Political change to the Labour Party. Labour's first response to change was the 'sell off' of the Old Power Stations and the Cancellation of the proposed New Wolfdean Dam and the closure of numerous Country Rail Lines. It built three Casino's to capture International interest provided funding and assistance for every Pub and Club with Poker Machines and failed to address the need for decentralization in a city which was coming to a stand still through the enormous demand on our Roads by Trucks. The growth for Industries in the Southern parks and continued growth in the central city would appear to have overturned the rules on the flood plain plan and a return to sales of land and Property Development in the Flood Plain resumed at an alarming rate.

From 1999 we saw a Premier Wayne Goss after such a short period of time Resign due to a so called Life Threatening Tumor on the Brain to take over as the University of Queensland Chancellor, and a second Premier Peter Beatty retire under stress to be Queensland's Representative in Los Angeles (after three Ministers were imprisoned and several resignations.)

Our current Premier Anna Bligh rejected a Proposal of Trade Training in our School system that was needed to address five hundred thousand homes over the next ten years and by doing this it would avoid the rent trap experienced overseas through the short fall of Targeted Growth in Regional Areas. It was Kevin Rudd who won an Election on the Educational Revolution of Trade Training in all Country and Regional schools (3327 schools, 600,000 students). Premier Bligh continued the winding back of Rail Services to our Country and Regional areas and further diminished their growth potential by Rationalisation of Mayors.

To address the enormous growth of Trucks from Southern States and Trucks returning on a Southbound leg from the North and West the Government and Council undertook a program of Bypasses and Tunnels and by restriction of Street Parking turned old buildings into Parking Stations and approved Multiple underground parking levels to

meet the needs of those Workers coming in from suburbs set up to reduce the demand created by the 1974 Floods.

Our Super Highways from the coast, from the North and West were experiencing hours of delays morning and afternoon (Yes we had doubled in all areas dedicated to Parkland High-rise.)

Jobs of State importance became jobs for mates and family and for this action we have failed to address the need of Professional direction in the expansion of this State.

Prior to Imminent Disaster 2010/Jan 13<sup>th</sup> 2011.

Since the Amalgamation of Councils it would appear no widening or deepening of Major River Systems was conducted, no clearing of trees blocking or obstructing the course of flow and up to the point of flooding recognition, no levy banks had ever been considered as a course of necessity. The Government and Councils gave no consideration to alternative road or rail bypass in Lou of a flood and as no action had been taken, gave a false sense of security to all areas where Dams were reaching flood proportions.

In the flood zone of Kilcoy the region was experiencing exceptionally lengthy rain periods causing most small farm dams to be perpetually overflowing. Since April Weather Groups were declaring a major weather shift to a wet year.

The Government released water in the South East Corner for a short period with a five dollar reduction in five hundred dollar water bills. At no stage did the Government talk about, discuss, or warn the Public of the South East Corner or North, every dam was at Maximum, and a Major State Disaster was very close.

The C.E.O. of Queensland Water remarked in December the Government was pleased to be holding the equivalent of five years water without additional rain.

It would appear not one Council reported to the people with the continuous rain it had taken the Dams in Queensland to Breaking Point.

The Somerset Dam had reached a point where the back water had reached all the way to the D'Aguiar Highway and cut it in three areas.

The Government decided to release some water from the Wivenhoe and Somerset Dams which should have been a Major warning to most on seeing several 'Sydney Harbours' going down the river just after Christmas.

#### DISASTER DAY --

In the heaviest rain we had experienced for four days

Someone TOLD Someone to PRESS THE BUTTON 5 gates opened and 305,000 million litres of water was let loose.

The Question to be asked I suppose, when was the Government TOLD the Petersen Dam (covering 33,000 square miles of catchment) was leaking at six metres over the 'TOP

WALL' about 750,000 million litres and further north the Paradise Dam was also releasing 45,000 million litres all Heading South.

The Bremmer River at Ipswich on the corner of the Catholic Cathedral and the Main Street is about twenty eight feet deep so it would only be natural a 20 metre wave of water would be like a Bondi Wave straight through town. I wasn't there to see the wave but in the '80's and '90's I sailed my yacht downstream to Jindalee under the South Brisbane rail bridge with a mast height thirty two feet and free board of four feet with a clearance of ten feet to the bridge.

#### VIDEO PROOF

Chanel 7 film clearly shows a wall of water carrying the floating restaurant from Oxley under the bridge at table level smashing the tables and umbrellas as it went under (four foot clear under the bridge putting the water level at that point at about forty feet deep.)

With every dam in Queensland pushing water south and no warnings given created a second hell the next three generations will not forget.

Twenty four hours later we talk about the Hero's who did what they could, in Queensland's worst Man Made Floods.

#### DID THE PREMIER KNOW:-

With the continuance of the cyclonic rain did she know all the Dams were at bursting levels and potential flooding water could be heading south within twenty four hours.???

Did the Premier, who had for three years clearly identified herself as totally in charge of not only the water in our current dams but was responsible for pursuing additional water for sale through Desalinisation, Pipe redirection to maintain flow and possible new Dam sites, a great strategy to maintain, a saleable commodity but it really needs the knowledge and the understanding of controlling it.

WATER and FIRE out of control is our worst enemy. Did the State have the right people who knew exactly how to control this situation ???

NO ! NO ! NO !

The previous Government who built the Dam said at seventy five percent it would be safe.

Why did so many people DIE ?, Why did we create the worst floods in Australia's History ?. Where were our Leaders when this water was being released ?.

In New Zealand they set the Death Toll at 158 and 200 missing after the Christchurch Earthquake, the Queensland Government said 39 deaths but how many are missing ?.

THE CLEAN UP.

All Politicians were seen to be involved in the Clean up from an 'X' Prime Minister to Current Prime Minister, Ministers, Premier and thousands of locals sympathetic to the disaster bestowed on those in the Flood Plains.

For the next Week after the Event, no-one has taken responsibility of an Event which by State De-Cree should NEVER HAVE HAPPENED.

The home units along the river front again went under and someone forgot to tell the Developer at A.N.L. Newstead 'Don't Build Units at Ground Zero' Level as the will go under, and Rocklea where the entire summer stock of Mangoes, Avocados, tomatoes etc, a farmers whole years work, goes under and no-one gets paid.

**WHY WON'T THE INSURANCE COMPANIES PAY !!!**

When the 1974 floods were finally settled, there was I believe a genuine understanding by the Major eight companies another flood of such magnitude would never happen again!! The Government knew the consequences of releasing such a volume of water into our river system especially at Christmas Time when the tides are so high and our city is built almost at the highest tidemark.

They knew an edict of seventy five percent which was so talked about long after 1974, it was a good investment for house insurance cover where the Government had approved new development, and of course with each new home and building came six separate inspections by Councils to ensure those investing their five hundred/six hundred thousand dollars into the area was considered safe and the Government and Council were promoting these developments collectively.

How, wrong they were with sales of land over premature rubbish tips and old mine sites converted to housing estates created a real scare for those who put their trust into such estates, it was too late.

Everyone in the way of the floods lost out !! Thousands of cars, thousands of homes and God knows how many lives if you didn't have someone to report you missing you are lost to History.

The Land and Home are State and Council issues, contents in so many cases are understated to avoid High Premiums, thus I believe a small settlement can be reached.

**RESOLUTION TO SUCH A DILEMMA:-**

As the Government and Councils pleaded for Federal assistance for funding to replace all that has been washed away on their watch, you would have to ask why, during the course of the wettest year when creek water is undermining our road system perpetually covered by water through lack of care in drainage, and not one burn off of rubbish in our river systems, a small detour could have been planned by our rail operator to ensure a higher ground route be sort to avoid holdups when our roads are down.

For the millions of dollars lost on push bikes and concrete bike tracks along with ferry wharfs and other infrastructures it would be better served the Federal Government provide a Flood Fund of ten billion dollars to assist those who have lost everything of

value and give them a chance to move to a more appropriate area where the risk of loss is not dependant on people who have neither the experience or understanding of what the responsibilities of their duties really are.

#### SOLUTION :-

I approached the New South Wales Premier at the highest recovery as it was obvious there were thousands of families who had moved to Queensland in good faith of investment and life style, **THEY WANT OUT**. Neither Government or Councils can or won't reimburse these people their life savings, it seems inevitable therefore the Federal Government through Social Security provide the losses incurred by those given access to properties in unsafe areas (flood plains) and in doing so can move to other States where a better course of providing a life style intended is more readily available and security of investment is guaranteed.

The Federal Government and the Attorney General can then, after this court has presented its findings may well decree a repayment to Canberra by those which the State found to have failed their Civic Duties and the cost burden to be carried by the Government and Councils over the next ten years.

This burden of risk taking can not be taken by those who provide such assurance when the risk by those responsible for the futures of so many families is only gauged on profit. If the Ford Motor Company sells a motor car and on driving it the wheels fall off, who is responsible, the Car Company or the Insurance Company ??

The decision will not be difficult as value of water which is the basic need by all families when buying a house becomes the Governments obsession to not only control its supply but as a means to obtain maximum returns from the people to whom it sells it to.

A continuation by such a Government on taxing high profits on those services such as water, electricity, and sewerage is crippling our State, as the cost of Transport and Fuel is spiraling out of control to the point of making it almost impossible to survive in the Regional Areas of the State.

#### THE CYCLONE :- YASI

While still cleaning up after the Flood – The Premier decided to ensure this time she would be seen telling the public of the pending disaster to the north by a cyclone coming in at the rate of 150/200 klms winds at its centre and traveling at approximately 25/30 klms an hour towards our coastline.

For almost a week the Premier took full control of the action necessary to warn the people of the pending storm. Every two hours there were up dates after meetings were held in the Regions.

The Islands off the Queensland coast were cleared of all guests and most staff by management to ensure there was no risk to these peoples welfare.

The Government briefed all, not only the public but all Government emergency groups including Police. For seven days the warnings went out but not one Council during these

briefings, it would appear, were told to go from house to house to consider the risk taken by the storm of 300 klms wind gusts to the homes to which they owned.

As with all cyclones of such magnitude common sense would say evacuate all for safety sake. THEY DIDN'T, and after so much promotion of care to be taken Thank God only a couple died.

All Councils in cyclone regions I would have thought made sure all homes in their Region were built to a standard to ensure maximum safety for all, apparently not in this case.

#### COURSE OF ACTION IMMEDIATE

The following morning at 7.30am E.S.T. I rang the Prime Minister's Office to put in to place a course of Action to save the thousands of tons in three areas of Bananas pushed over by the wind.

1. Call the Consul General of New Guinea in Brisbane Paul E. Neraub 0417 764 329 to arrange up to 200 young men to come from Port Moresby on Sunday to assist in the collection of all those bananas deemed save able in the cyclone area.
2. Call Anna Bligh to confirm the need for 200 New Guinea youth from Port Moresby to pick up the banana bunches. (Premier Bligh had previously remarked that she would like to help New Guinea when a need arose).
3. Ring the R.A.A.F. for a Hercules from Darwin on Friday to bring back the young men on Sunday morning.
4. Ring the Prime Minister in Port Moresby and confirm the need for his people's help to clean up the mess.

(Prime Minister Kevin Rudd, had a special rapport with Michael and he would have supported the offer for help).

In retrospect regarding the hundreds of boats thrown up onto the shores along our coastline within the harbours they were tied, it would appear the Harbours and Marine Dept. failed to warn boat owners it would be better to position their boats three klms off shore with dual anchor's out with sixty to seventy feet of surface rope to ride the waves for twenty hours to save their boats.

If its not the Governments decision to admit gross negligence for all the problems generated by indecision leading up, and prior to the Worst Floods in Australia's History, perhaps it may well make the decision itself to provide all Councils with funding to replace the small number of homes in each area by comparison to the overall number of homes that weren't effected. All Councils know how much was spent by each family affected either partially or totally and all Insurance Companies know what was covered by Policies against those homes and businesses.

Queensland is becoming a State recognized as a poor investment State and this must be turned around through the acknowledgement that our decision makers who are leaving



The Government in numbers perhaps, got it wrong and full compensation should be sort as quickly as possible so some 50/100 thousand people can get on with their lives.

The two hundred million plus collected under the Premiers' call for aid, should be handed over immediately to Red Cross for distribution (Queensland will suffer in future if this money ends up like the last Cyclone Disaster Appeal with seven hundred and fifty thousand dollars not going to the people for which it was intended !!).

#### SUMMATION

To the thousands who visit the Tourist Route each year take time out to stop and walk the flood path and in remembrance to those who for a brief few minutes wondered in HORROR, how could this happen to me.

To feel the Freedom that the Mountains and Plains have to offer and to share the shattered Dreams of those who lost everything, you, as I did, will see on the mud path as you go cars and caravans smashed and unrecognizable, washing machines and mattresses strewn in the trees. They may be gone now, but you still see the memories.

To the shells of the few remaining houses to look inside and try to imagine what were they thinking moments before Death.

I found in one a 'Token of Hope' from a man called Edwin to a son called Spud, who apparently left long ago to Teach overseas, two photos for his sons' heritage an old house with a picket fence and five boxes of gold coins and collectables he thought might help Spud enjoy his later years.

The House had been gutted and the mud was three foot thick for as far as the eye could see.

To the thousands who came in Good Faith to Share the Queensland Dream shattered by dams built by a previous Government for our Future and Prosperity only to be destroyed like Spud's Retirement.

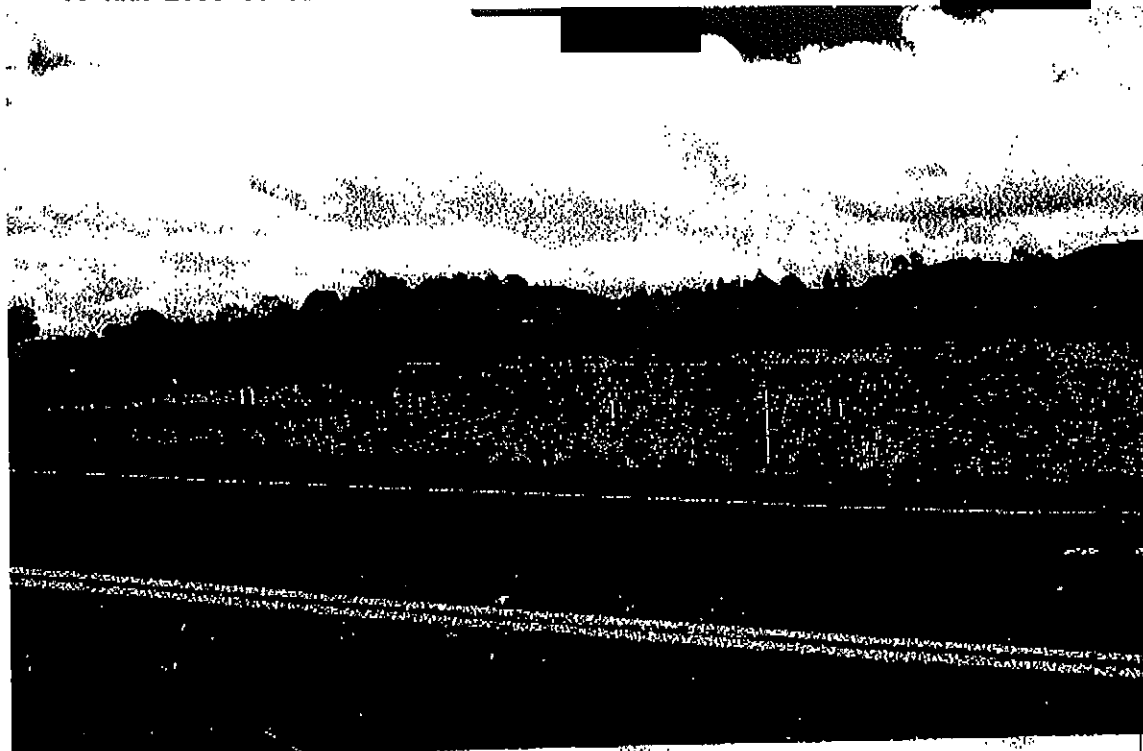
Queenslanders will Learn Hard from this, and Hopefully be Vigilant in the People they Choose to Provide Our Security in the Future!

Correspondence removed



Piles of Poles and Damage  
on each side of Kiley Creek.





Somehow I don't  
 Back water  
 had to Release  
 into the  
 Wygenhoe Dam  
 Before the  
 Dam Release



All Roads were  
 cut by water  
 Backing up  
 at dams  
 Risk at  
 150% Plus



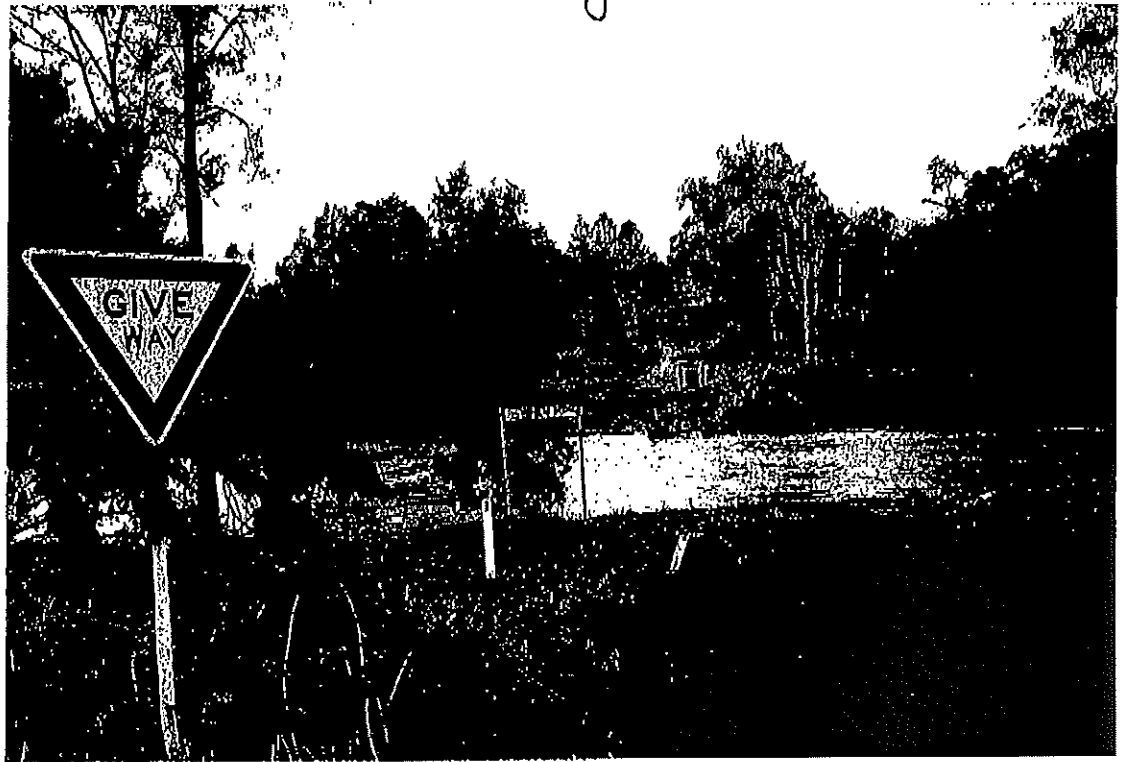
Some was not  
 game enough  
 to Release  
 the surplus!  
 D'Angelo  
 Highway  
 cut for 7 days.

14 of 14 Bridges  
 in Kilauea  
 damaged on  
 west side  
 of Dunsmuir in  
 7 creeks.

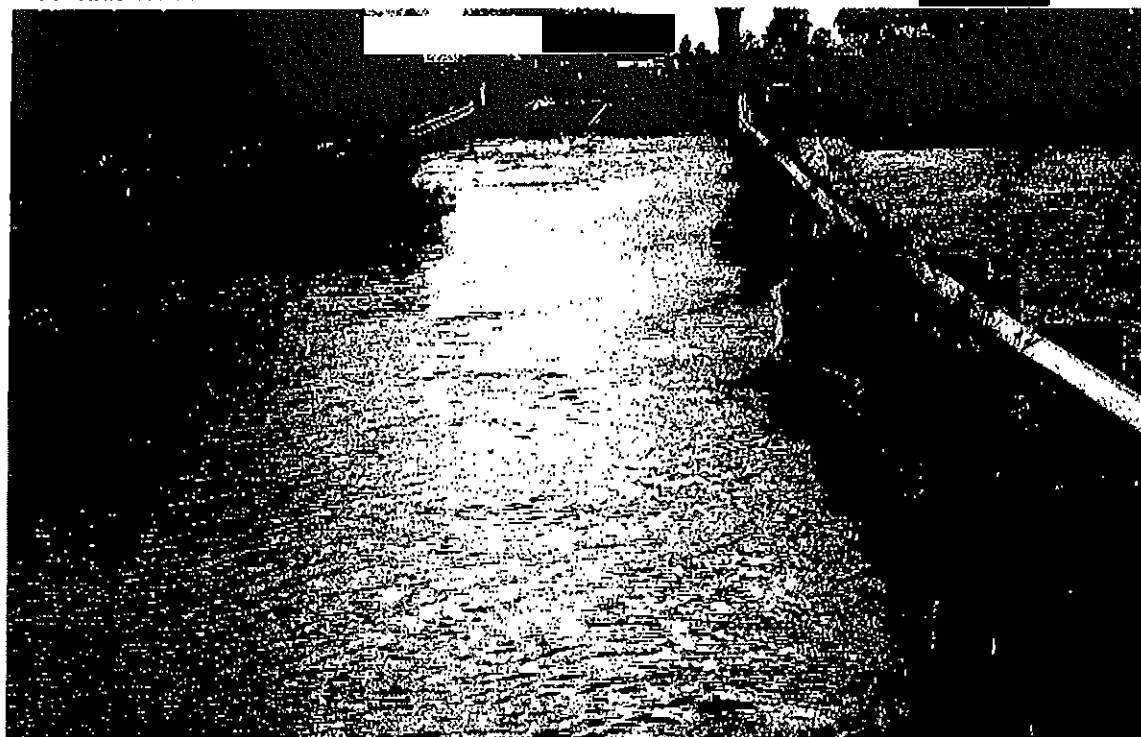


- Hobner's Bridge - Gone -

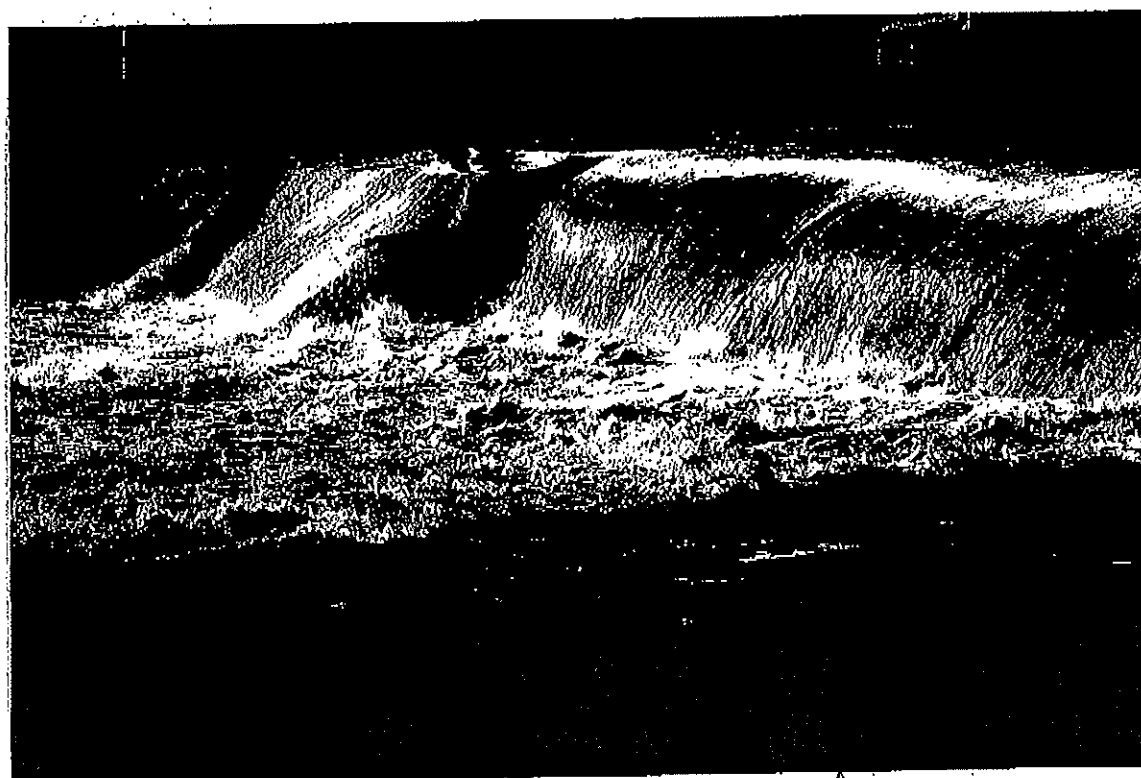
trees and logs  
 often in our river  
 systems became  
 offering ramps,  
 taking out fences  
 and railing in  
 base Park.



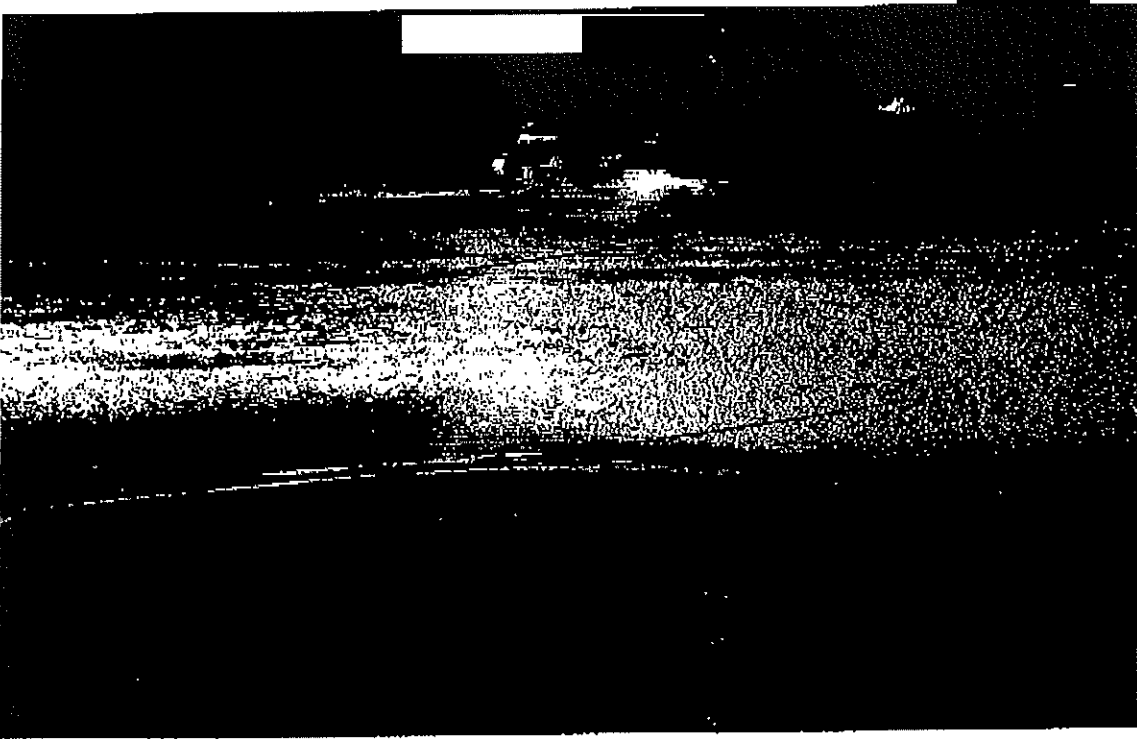
Hobner's Crossing - 7 days  
 before people could cross other side  
 to town.



Ringhastun's Bridge



Local, weir leading into Town (Kilroy)



one local Bridge in Kelsey with Power Lines Down and Live  
(WALSH'S Crossing -)

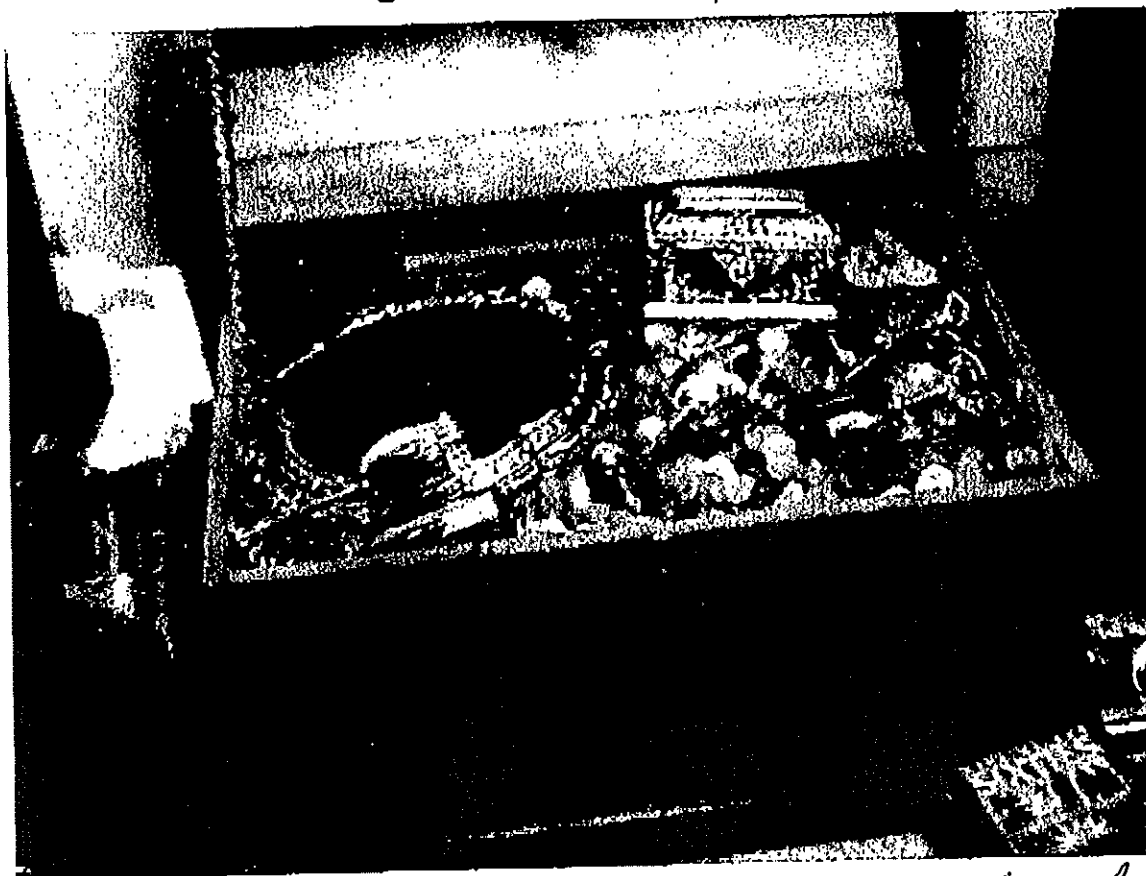


This local Flooding into the Somerset Day went on for  
Days Prior to Release. and Nobody talked about  
the Dams. Threat to the City of Brisbane and Beyond

to Bureau of. Gold. Vault - 5 months old.



SPUD's Extractions - GONE →



Contents OBVIOUS - GOLD + a Few Silver bits on top



Correspondence removed