

# QUEENSLAND FLOODS COMMISSION OF INQUIRY

## Oaths Act 1867

### Statutory Declaration

#### QUEENSLAND TO WIT

I, Peter John Eric Maguire, of care of Council Chambers, Corner of Egerton and Borilla Sts, Emerald in the State of Queensland, Mayor of Central Highlands Regional Council, do solemnly and sincerely declare that:-

Annexed to this statement and marked "A" is a copy of the Central Highlands LDMG as at 30 November 2010.

The following is a true statement containing my response to the queries raised by the Commission in its letter dated 10 May, 2011.

**1) An assessment of the adequacy of the Emerald community's response during the 2010/2011 flood events.**

- a) Following the 2008 Flood event and Council's flood information sessions, the biggest criticism from the public had been the lack of communication. Since that event, Council has experienced forced amalgamation and was in many ways preoccupied with this, however, we have employed a Disaster Management Coordinator and a Communications Manager amongst others. The creation of the Communications position certainly made information sharing easier during the 2010/11 food events.
- b) Council and LDMG's response to this recent event was assisted in many ways by many employees, community representatives and people off the street doing their utmost to assist the community.
- c) The community response was, I believe, very positive and accepting of the situation. The development of the use of SMS texting was implemented along with information posted on our website and emails being distributed all kept people informed, and the provision of this information through various media assisted greatly with the community's response.
- d) As the event occurred during Christmas and New Years, many people including Council and SES staff, were out of town, which made it a challenge for the initial response.
- e) Council staff and managers prepared a roster of staff that would be available in Emerald and at our other offices during the break in the event of a disaster. This proactive planning was to prove very effective in setting up activities eg updating the website, and getting traffic controls in place early. This will now become standard practice for Council during and prior to each Christmas/New Year period.
- f) The SES response was, as always, outstanding with the Emerald, Gemfields and Rolleston/Springsure groups all working collaboratively to assist their communities.

- g) Some residents though were disbelieving and slow to respond until prompted. Some may have been slow to move. This issue was not common - in fact it was really very minor and it was primarily because they had never been flooded before.
  - h) Following the flood the most positive comment we have had was regards the use of SMS texting and even from people who were flooded. They have said that at least this time they were aware of what was happening and were able to get in and help each other to get out or up off the ground even though in some cases that proved not high enough in the end. This is evidenced by the emails Council received thanking us and the LDMG for our efforts. Our website also received more than 200, 000 page views from Dec 25 to Jan 2, indicating they saw this as a reliable and up to date source of information.
  - i) Attached at *Appendix "B"* are copies of text messages sent out with date and time. *Attached at Appendix "C" is a map of the CHRC LDMG SMS Message Area, which shows those residents who were to receive the text message and/or landline phone calls.*
  - j) Post flood everyone got in and started with the cleanup as soon as they could access their properties. We as a council and LDMG did not try to stop anyone going back to their houses to start the clean up. Our experience from 2008 was that preventing residents from doing this would not work and so by the weekend after the peak a great deal of the flooded houses had been stripped bare, and the wet carpets and furniture collected by the council and community members from the footpaths was disposed of.
  - k) This was a key strategy, combined with the work of the mining companies, in helping people clean out their homes and check electricity, in getting the town clear of flood damaged household fittings and furniture. Not only did it get all the rubbish clear from homes and streets, reducing potential health and other dangers, but psychologically a visual reminder of the floods at the street level was also minimised.
- 2) An assessment on the effectiveness of the disaster response in outlying communities within the Central Highlands Regional Council area.**
- a) During the disaster, teleconferences were held with outlying property owners and coal mining companies to update them on situations that may impact on them.
  - b) Almost all of the State highways and Council roads in our region were closed during the event. It was impossible to travel from one centre to the other; hence making things like food re-supply a challenge.
  - c) Considerable use was made of fixed wing and helicopter aircraft including Army Black Hawks to resupplying the region. Resupply was a difficult area, with our response lacking at times, but this was not from a lack of effort by staff and Springsure Councillors. I believe the sheer magnitude of the task, and the fact that the whole of Queensland was being impacted, did not help.
  - d) Staff in our Duaringa office maintained daily e-mail and phone contact with people on properties in the surrounding areas, and provided feedback to the LDMG regarding the need for food drops and re-supplies.
  - e) SES volunteers in Rolleston continually provided boat transfers across the flooded Panorama Creek.

- f) Our response continues to this day with a Recovery Co-ordinator in place as well as a communications officer and a secretary who all work with the five subgroups that were set up based on the State's Recovery Plan. The response phase is always the most difficult and certainly lasts a lot longer than the actual event. I believe our response during the cleanup days, and even now, have been of a high standard due to the community people involved in the subgroups and the assistance of many state and federal government people as well. We appreciate it can never be perfect, and we will be looking at ways to improve this aspect of the disaster as well.
- 3) An assessment on the media response during the 2010/2011 flood events and its effectiveness in informing rural and regional Council residents.**
- a) As Mayor, I was the Chairman of the LDMG and the Official Spokesperson for both the LDMG and Council. All members of the LDMG and Council were aware of this, and directed any enquiries or requests for information through the Mayor. Use was made of the State/Federal Government SMS Texting System which was implemented post Victoria Bushfires (for the first time). Seven texts were sent out to residents, each text containing a maximum of 160 characters, so we were restricted in the amount of information that could be included in them. The LDMG had to carefully frame the messages, often in a very short period of time, and with the information available to the LDMG at the time, to convey as much necessary information as possible.
- b) Council Communication personnel were using the Council website extensively from 3<sup>rd</sup> December 2010 and had set up an email distribution list which included media outlets.
- c) ABC Radio, as the Disaster Network, broadcasted from the Council offices where the LDMG were operating from and also sat in on LDMG update meetings which were held during the event. When the LDMG was activated, they were given some desk space at the Chief Executive Officer's office, so that they could be kept in the loop.
- d) As the Mayor, I was the person who handled most media enquiries and interviews. Requests for media interviews were prioritised to ensure maximum effectiveness in getting information out to the Central Highlands communities. ABC Radio was the highest priority, as the official disaster broadcaster, followed by local radio, and then state and national TV and radio networks. This included SBS radio and TV, ABC TV, channels 9, 10 and 7, radio stations 2UE and 2GB, and international TV and radio, including the BBC and German radio.
- e) The media are an essential part of any communication strategy at any time, particularly during a disaster. They were all very cooperative and understanding as the situation developed. With the ABC being the Disaster Network that people are advised to listen to (they have the largest coverage), it is my understanding that all areas of council should have had reception from the ABC (if they had power). Therefore by broadcasting live from Emerald and doing crosses at other times, people even in outlying areas should have been aware of what was going on. One never knows for sure though.
- f) Copies of Media Briefings are annexed to this statement and marked "D".
- 4) An assessment of the Council's independent local hydrologist during the 2010/2011 flood event, their identity and role within the local disaster management**

**structure, the use of his findings by the LDMG and their interactions (if any) with other relevant agencies during the 2010/2011 flood event.**

Identity and role of the local hydrologist

- a) Mr Geoffrey Kavanagh, an employee of C&R Consulting, Geochemical & Hydrological Solutions Company, performed the role of hydrology consultant to the LDMG. Geoff is the Central Queensland Manager Water Management / Mine Site Specialist.

Assessment of the local hydrologist

- a) Mr Kavanagh was an important part of Council's 2008 Flood Team and as a result was asked to work with Council and LDMG during the 2010/2011 event.
- b) Geoff has been a resident of the Central Highlands all of his life and has been involved in water planning and water management within catchments of the Central Highlands since 1995.
- c) Geoff is well respected and his knowledge has been invaluable to the Council and LDMG, most particularly during the 2008 and the most recent flood events.

Use of the local hydrologist's findings by the LDMG

- a) The findings were utilised in consultation with Sunwater and BOM. Briefings via teleconference were held daily in the early morning and late evenings, and where appropriate, the results of these were then transmitted to residents by the Mayor and Communications Officer via text and email, and placed on the council website.
- b) Further work involved the road network and when accesses may needed to be closed and heights relevant to important infrastructure ascertained.

Interactions with other relevant agencies during the 2010/2011 events

- a) Interactions with other relevant agencies was handled by the LDMG Consensus was reached with these agencies during each teleconference as to any updates that needed to be conveyed to residents. The LDMG was happy with the consensus view, in particular where BOM utilisation of all information provided made the determining predictions.

**5) Any measures being proposed, planned or implemented to prepare for, mitigate or manage future flood events (such as the installation of automatic river gauges, culvert management, levee construction and the like).**

- a) Council has engaged Kellogg Brown & Root Pty Ltd (KBR) to undertake an audit of hydrological data from both the 2008 and 2010/11 flood events to assist in the development of a Flood Plain Management Study and has also engaged C&R Consulting to undertake an assessment of the upper Nogoia and Fairbairn Dam catchment and a Urban Flood Plain Analysis from the Fairbairn Dam spillway to downstream of Emerald township at Theresa Creek. These reviews will capture data to assist the creation of a flood plain model, a Flood Plain Management Plan and inform the future planning scheme and influence proposed land zoning to minimise the impacts of flooding into the future.

- b) KBR and C&R Consulting will also consider issues such as the effect of urban development and structures on the flood plain and will review the impact of levees and structures such as bridges and rail infrastructure.
  - c) The current timeframe for the completion of this study is:
    - (1) Collation of base data on 2008 and 2010/11 flood events – mid May 2011;
    - (2) Gap Analysis to inform Flood Plain Management Study – July 2011; and
    - (3) Completion of Hydraulic model for Emerald and upstream catchment area – December 2011.
  - d) Once completed Council will be better able to make an informed decision on the appropriateness of measures proposed to mitigate or manage future flood events.
  - e) Further development of the flood network will take place and new/upgraded rain and river gauges will be sourced for the Nogoia Catchment. This had been done prior to the 2010/11 event, and as I understand it, overall, these were pretty good for this event, but further upgrades will continue. Substantial work needs to be done in the Comet River catchment around Rolleston and northwards, and Council will be installing gauges in these areas. We are always looking at improving resources for the SES and that will continue. Some resource companies have also offered assistance in this regard.
- 6) An assessment on past and future land planning in the Emerald township, given the impact of the 2008 and 2010/2011 flood events and the recent growth of the Emerald township.**

#### Land Planning – Past

- a) Under the *Emerald Shire Planning Scheme (Amendment 1 – 2009)*, and its precursor the *Emerald Shire Planning Scheme (2007)*, no specific flood heights were identified for all affected lands as insufficient information was available at the time of the creation of these documents to address the requirements of State Planning Policy 1/03 “Mitigating the Adverse Impacts of Flood, Bushfire and Landslide”. As such, flood heights and minimum floor levels for developments within the former Emerald Shire have been imposed on an advisory basis only.
- b) To assess developments in these areas the former Emerald Shire Council utilizes the “*Emerald Interim Flood Levels Map to Determine Floor Level*”, as prepared on 2 August 2006 (Appendix E). This map identifies that Floor Levels should be a minimum of 300mm above the flood level in most instances. This level has uniformly been imposed on all developments within the mapped area.
- c) A similar issue applies to all other planning schemes currently applicable within the Central Highlands (i.e. the planning schemes for the former shires of Bauhinia, Duaringa and Peak Downs).

#### Land Planning – Future

- a) Flood mapping identifying the highest recorded flood events to affect lands within the Central Highlands local government area has been prepared. This mapping principally relates to information collated from the 2008 and 2010/2011 flood events of the Nogoia River. Mapping of the 2010/2011 event became available for planning purposes early in March 2011 and has since been utilized to inform recent town planning decisions.

- b) As noted earlier, Council has also engaged KBR to undertake an audit of hydrological data from both the 2008 and 2010/11 flood events to assist in the development of a Flood Plain Management Study and has also engaged C&R Consulting to undertake an assessment of the upper Nogoia and Fairbairn Dam catchment and a Urban Flood Plain Analysis from the Fairbairn Dam spillway to downstream of Emerald township at Theresa Creek. These reviews will capture data to assist the creation of a flood plain model, a Flood Plain Management Plan and inform the future planning scheme and influence proposed land zoning to minimise the impacts of flooding into the future.
  - c) A review of potential growth corridors that are free of significant constraints, including flooding, will be conducted as part of Council's strategic planning processes associated with the creation of a new planning scheme for the Central Highlands local government area. This review will commence on 12 May 2011.
  - d) A Temporary Local Planning Instrument will be introduced to enable Council to adopt an Interim Flood Level to regulate the use of known flood affected land.
  - e) Council has imposed conditions on new development applications approved post the 2010/2011 flood to ensure a minimum floor level at least 300mm is achieved above the highest recorded flood height for the subject land.
- 7) Advice as to any feature of the disaster preparation and planning stages or the disaster response and recovery operations which presented particular difficulty or may require practical or legislative change to improve future disaster management in the local area.**
- a) I believe our disaster preparation and planning was of a high standard. Regular LDMG meetings are held throughout the year and were held daily during the flooding event.
  - b) Refer *Appendix "F"* for information included in the CHRC Regional Roundup Summer 2010 edition, which was circulated through the community.
  - c) *Appendix "G"* is a copy of the Flood Booklet '*Preparing and Responding to Disasters – A Residents Guides*'. This was initially prepared by the former Emerald Shire Council and distributed to Emerald and Gemfields residents and is also available on Council's website. It is being updated for the amalgamated Council area. Various Queensland government information sheets were also made available to the public.
  - d) All State and Federal Government agencies worked well. I believe having a clear chain of command, with Police Officers in charge supported by EMQ advice, worked well.
  - e) Subsequent to the event, the response and recovery operations have been performed by all involved to a high standard. Unfortunately, we had two significant events in 35 months, but this assisted with the planning and response phases of a disaster.
  - f) The flood studies and reports referred to in paragraphs 5 & 6 will also help with our preparedness and planning in the future. A big limitation of such studies is the substantial cost, and (in some areas) lack of supporting historical data, making it difficult to provide detailed studies for all of Council's area.

- g) I have no recommendations for legislative change.

## 8) Other issues

### Timeline of key points

- a) Regular LDMG meetings held during year:
  - (i) 7<sup>th</sup> April 2010
  - (ii) 9<sup>th</sup> June 2010
  - (iii) 4<sup>th</sup> August 2010
  - (iv) 6<sup>th</sup> October 2010
  - (v) 1<sup>st</sup> December 2010
- b) Council staff conducted maintenance on drains throughout our towns including Emerald in the leadup to storm season
- c) Council staff trained on new Disaster Management System (7<sup>th</sup> September & 11<sup>th</sup> December 2010)
- d) At various dates, sandbags were sourced and made available in other towns as well as Emerald
- e) Regular meetings held during the first event:  
3<sup>rd</sup> & 4<sup>th</sup> December 2010
- f) Disaster Coordination Centre set up with computers, phones etc on Christmas Eve in response to advice of wet Christmas
- g) LDMG activated 27<sup>th</sup> December 2010 to 5<sup>th</sup> January 2011 (inclusive)
- h) Daily, and sometimes twice daily, briefing notes / media releases issued, and also emailed and placed on Council website
- i) During the Flooding event Four Evacuation Centres set up in Emerald:
  - i) Town Hall
  - ii) Emerald Agricultural College
  - iii) St Patrick's Catholic Primary School
  - iv) Harvest Life Church

### Complaints made

- a) I am aware that some issues have been raised by members of the public about the information I as the LDMG and Council spokesperson made available to residents. In relation to those issues, :
  - i) Warnings transmitted via text, email and Council's website were sent to residents only after all facts and circumstances had been discussed by BOM Hydrologists, Sunwater and local representatives, and a consensus was reached.
  - ii) It was a limitation of the SMS system that texts could not be longer than 160 characters and this included spaces and full stops.
  - iii) Feedback indicates that the great majority of residents appreciated this form of communication.
  - iv) It is also worth noting that people with a mobile phone billing address outside the area here eg Brisbane, would not have received the text.
  - v) The message conveyed had to be relevant, hence the reference to the 2008 flooding event. For people who were not here then, it would have had a lesser meaning , and that may have been a problem, but the expectation was they would supplement that information by asking neighbours, friends, or contacting Council.
  - vi) More information was able to be made available on our website and via emails. Every effort was made to improve communication following the 2008 flood event.
  - vii) Issues relating to Ensham Coal Mine and their levies, and also possible future mitigation issues for the Emerald Township, and Council planning and building

heights are currently being addressed by KBR and C&R Consulting as outlined earlier in response to Questions 5 & 6.

- b) Other issues raised by members of the public include:
- i) The Fairbairn Dam and the impacts it has on flooding. It is important to bear in mind that the Fairbairn Dam, upstream of Emerald on the Nogoa River, is not a mitigation dam and Sunwater as the operator is only able to release a maximum of 2000 megalitres per day. When the dam is full at 1,300,000 megalitres, it would take over 12 months to lower it to around 50%, assuming there were no more in flows. Information supplied to me indicates that during the 2010/2011 the Fairbairn Dam had 4,324m<sup>3</sup>/s of water outflow and 6,422m<sup>3</sup>/s of peak inflow running into the dam. Without the dam we would have had 30% more water through town than 2008 and the 2008 flood would have been similar to what we just had. So whilst the dam was not built as a mitigation dam it certainly saves the town from a significant amount of water and subsequent flooding.
  - ii) Much is also being made of what is the largest flooding event Emerald has ever had. The Emerald Shire Historical Association 'A History of Emerald' published in 2001, records on page 274 under floods that *"Probably the worst period for flooding was in the 1950s when there were floods sometimes twice a year. The worst flood in memory was probably the 1950 flood when the water height reached 51 foot, 6 inches, (15.697metres) thought to be the highest flood level since the town was established over 70 years before."* History does over time talk about large floods in the early 1900s; however, no recorded levels are available for us to refer back to. The BOM website also refers to the 27<sup>th</sup> November 1950 as being a record flood at the Nogoa River at Emerald. (A number of other significant flood events occurred in the 1950s.)

#### Lessons learnt and Improvements/Considerations for future events

The LDMG and Council managers undertook separate debriefings, and some of these recommendations have emerged from those reviews.

- a) That, as was the case here, the Mayor of the Council should be the Chairman of the LDMG.
- b) Communication of timely information to residents is vitally important and a variety of media including the website, SMS and radio should be used.
- c) Preparedness, including training for LDMG members, SES and Council staff is essential.
- d) We operate as an overarching LDMG with subgroups and those groups have the local knowledge and expertise to handle many tasks locally. If we have a similar event again, affecting the whole Council area, the LDMG should activate the LDMG subgroups in the other towns in the Council area.
- e) Adequate police numbers are vital to support the locals when large areas around town are cut off.
- f) An updated flood warning system is of vital importance. We believe we have almost achieved that. We will be increasing the number of rain/river gauges in the Nogoa Catchment and also looking at the Comet River Catchment.



- g) A number of regional and state projects would also be of benefit to the community in planning for future events:

#### 1. Inland Route

Clearly as demonstrated, the situation we were in January, with all access from the south east closed and no way to get vital supplies from distribution centres in the south to Central and North Queensland, was problematic. Obviously you can never flood proof every road but the upgrading of any number of access roads to Central and North Queensland via inland routes would significantly improve all weather access. It is also important to consider location of logistical distribution centres in North/Central Queensland as well, so we are not so reliant on South Queensland.

#### 2. Urgent Works – Rolleston

Urgent works are needed to raise the deep channel south of Rolleston on the Carnarvon Highway leading to the Carnarvon Gorge and Injune-Roma, as well as Panorama Creek and associated overflows leading west from Rolleston-Springsure on the Dawson Highway. The flooding and these closures have meant that the Rolleston community has, on various occasions, been cut off for weeks and months and has had significant financial and social impacts on this community, not to mention the rural community and also the Rolleston Coal Mine (Xstrata). In addition to the above, the impacts on the transport and tourism industries are substantial as well. These roads are also a vital traffic route for heavy transport leading north and could be one of the accesses used heading North. As well, access through to Blackwater north then across to Duaringa and Rockhampton is possible. From Duaringa with some flooding works, access to the Bruce Highway via the Apis Creek Road can also be achieved linking to the Bruce Highway near Marlborough.

#### 3. Access from West Emerald to East

During this recent flooding event, as the Mayor and Chairman of the Local Disaster Management Group, it became obvious that if we had received any more local rainfall over the town when the river was peaking, the circumstances would have been much more dire. Simply put, to ensure that the approximately 8,500 people that live in Emerald on the Western side of the river can get to safety when the Nogoia River (Vince Lester) Bridge is closed and when we also lose access via the railway, we need a higher level bridge across the Nogoia River. There is no way we can helicopter transfer that many people. This, I believe, needs to be at a level commencing at the height of the Shell Service Station heading East at the very least.

These matters obviously would involve the commitment of significant resources, and are well beyond the funding capacity of Council. Additionally, these roads are state-controlled roads, and not in Council's control. I formally request that these three matters be pursued as a matter of priority for our region.

#### Council resolutions

- a) Below are extracts from Council Minutes of resolutions passed by the council in relation to the 2010/2011 flood event. These are simply for the information of the Inquiry to show that we are working hard to have the region get back to normal and assist residents wherever we can.

**Emergency Resolution – CHRC Flooding**

***Resolution:***

Cr Haylock moved and Cr Rolfe seconded 'That Council authorise the Mayor and Chief Executive Officer to approve the establishment of temporary premises for the relocation of residents and businesses affected by the 2010 floods, temporarily overriding those relevant requirements of the Sustainable Planning Act 2009, planning schemes and other relevant statutes due to these exceptional circumstances. These requests are to be assessed on their merits and include a risk assessment that incorporates at a minimum evidence of building approvals (e.g. structural certification, footing inspections, etc), plumbing and drainage approvals, and health and food licences as appropriate. All approvals granted must be re-evaluated within six (6) months of issue to confirm the ongoing need for such temporary premises, **and further**

That the actions of the Mayor and CEO be confirmed in authorising landowners who own or who can coordinate road plant, to carry out the works necessary to provide a minimal form of access to basic services, in accordance with Section 184 of the Local Government (Finance, Plans and Reporting) Regulation 2010. Where this action is planned to be carried out, the following requirements are required:

- Firstly, a Risk Assessment needs to be carried out to ensure that before any works are commenced, people and plant won't be injured/damaged;
- Photographs are to be taken before and after works;
- The following information to be provided to Council:
  - Details of works to be carried out
  - Location of the works
  - Equipment used and hours recorded
  - Names and addresses of people carrying out the works
  - Fuel used
  - All other expenses associated with the works being carried out including invoices.

Carried

**Rate Levy Payment Options for the Third and Fourth Quarter 2010/11**

***Resolution:***

Cr Bell moved and Cr Brimblecombe seconded 'That the following process be adopted for the payment of rates and charges for the 3rd and 4th quarters of the 2010/11 financial year.

Third levy rate notices will be issued early February with a due date 35 days after the issue date. The fourth levy notices will be issued early May with a due date of June 8th

Upon completion of the attachment sent out with the third levy rate notice by ratepayers who have suffered a loss as a result of water inundation:

- Payment of rates will be deferred to 8th June 2011 for the third levy; and
- Residents and affected rate payers who are connected to the town reticulated water scheme and who were affected by water inundation will be eligible to receive a \$50 water rebate off their fourth levy rates which includes water consumption,

With the abovementioned being for people affected with water inundation, or who have suffered a loss and it is Council's expectation that those who can pay do so by the due date as per the rates notices issued.

**Note: Rates Relief for Flood Affected Ratepayers**

Council will be sending its third quarter rates notices out in early February, with a due date for discount in early March. These will be accompanied by a letter from the Mayor, stating that ratepayers affected by the recent floods can complete the attached form (a simple tick and flick), to have their rates payment deferred to June 8 and still receive the discount. Residents and affected rate payers whose properties were inundated in a water reticulation area will also be able to apply for a \$50.00 rebate on their water charges on the same form to compensate for water used in the respective cleanups.

The fourth rates levy, (including water charges and the \$50.00 rebate, if applicable,) will be sent out in May, with the discount date of June 8.

**These special arrangements have been put in place to assist people who have suffered a loss as a result of water inundation. It is the expectation of the Mayor and Councillors that those residents whose homes, businesses, and rural properties that were not affected should pay their rates by the due dates on the rates notices.**

Carried

**MINUTES – GENERAL COUNCIL MEETING – MONDAY 21 MARCH 2011 – PAGE 14**

Flood Management – Upper Catchment Study and Urban Flood Plain Analysis

***Resolution:***

Cr Rolfe moved and Cr Brimblecombe seconded 'That Council

**A.** undertake as a matter of priority:

- i. an appropriate study of the Upper Catchment of the Nogoia River to the Fairbairn Dam to establish and identify the event; and
- ii. An urban flood plain analysis from the Fairbairn Dam Spillway to downstream of Emerald to better understand the characteristics of the flood plain;
- iii. Such studies to be undertaken in such a manner that there are no duplication with any existing work currently being undertaken; and

**B.** pursuant to Section 184 of the Local Government (Finance, Plans and Reporting) Regulation 2010 resolves to dispense with the calling of quotes/tenders for the Upper Catchment Study and the Urban Flood Plain Analysis for the following reasons:

- i. having regard to the urgency to complete these studies prior to the next wet season, a genuine emergency exists; and
- ii. Due the specialized nature of the services to be provided it would be impractical to invite Quotes/tenders; and

**C.** the Mayor and Chief Executive Officer be delegated the task of accepting any proposal to undertake the Work.

Carried

**MINUTES – GENERAL COUNCIL MEETING – MONDAY 4 APRIL 2011**

***Resolution:***

Cr Hayes moved and Cr Nixon seconded 'That Council resolves to suspend delegations for the decision of applications for Material Change of Use and Reconfiguration of Lots on land in known flood affected areas until such time as a Policy is adopted with respect to minimum acceptable floor heights in flood affected areas.'

Carried

And I make this solemn declaration conscientiously believing the same to be true, and by virtue of the provisions of the Oaths Act 1867.



Declarer

Taken and declared before me at **Brisbane** this **13th** day of **May** 2011, before me.



~~Lawyer/Justice of the Peace/Commissioner for Declarations.~~

Name of Local Group: **CENTRAL HIGHLANDS LDMG**

Date details last received: 30<sup>th</sup> November, 2010

Chairperson							
Organisation	Position	First Name	Surname	Postal Address	Email	Phone	Mobile
CHRC	Mayor	Peter	Maguire	PO BOX 21 Emerald QLD 4720			

Deputy Chairperson							
Organisation	Position	First Name	Surname	Postal Address	Email	Phone	Mobile
CHRC	Councillor	Gail	Nixon	P O Box 99 SPRINGSURE Q 4722			

Local Disaster Coordinator							
Organisation	Position	First Name	Surname	Postal Address	Email	Phone	Mobile
CHRC	Manager	Bill	Wilkinson	PO BOX 21 Emerald QLD 4720			

Members (As appointed under Section 33 of the DM Act)							
Organisation	Position	First Name	Surname	Postal Address	Email	Phone	Mobile
CHRC	CEO	Bryan	Ottone	PO BOX 21 Emerald QLD 4702			
CHRC	Gen Manager Gov & Commun Services	Philip	Brumley	PO BOX 21 Emerald QLD 4720			
CHRC	General Manager Civil Operations	Bill	Turner	PO BOX 21 Emerald QLD 4720			
Local Controller	SES	George	Thomson	PO BOX 116 Emerald QLD 4720			
Qld Police	Senior Sgt	Graeme	Reeves	PO BOX 67 Emerald QLD 4720			
QFRS Urban	Area	Steve	Murray	PO BOX 1365			

	Commander			Emerald			
QFRS Rural	Area Director	Larry	Lewis	PO BOX 170 Barcaldine QLD 4725			
SunWater	A/Service Manager	Neil	Farrell	P O Box 250 Emerald QLD 4720			
Ergon	Manager	Cary	Challacombe	PO BOX 338 Emerald QLD 4720			
Main Roads	District Director	Rex	Cowan	PO BOX 1787 Emerald QLD 4720			
EMQ	Area Director	Patrick	Downing	PO BOX 1397 Emerald QLD 4720			
BMA	HSE Manager	Derrick	Barden	PO BOX 1526 Emerald QLD 4720			
Rio Tinto (Kestral)	Community Relations Specialist	Maureen	Tutton	P O Box 1969 Emerald Qld 4720			
Communities	Community Recovery Coordinator	Ken	Crane	PO BOX 737 Rockhampton QLD 4700			
Health	Manager of Business Systems support	Lorelei	Kinsey	PO BOX 879 Emerald QLD 4720			
QAS	Area Director	Warren	Kellett	P O Box 34 Emerald QLD 4720			
QR	Station Master Regional Freight	Wayne	Spacie	PO BOX 28 Emerald QLD 4720			
CHRC Capella Area	Chair Satellite Capella Group	David	Brimblecombe	"Dalkeith" 693 Corry Rd Capella Q 4723			
CHRC Emerald Area	Chair Satellite Emerald Group	Kerry	Hayes	PO Box 1010 EMERALD Q 4720			
CHRC Blackwater Area	Chair Satellite Blackwater Group	Paul	Bell	16 Mellish Cr Emerald Q 47201			

CHRC Springsure Area	Chair Satellite Group Springsure	Gail	Nixon	P O Box 99 SPRINGSURE	
CHRC	Emergency Management Coordinator	Mike	Flanigan	PO Box 19 SPRINGSURE 4722	
Q Build	District Manager	Brian	Schonknecht	P O Box 1012 EMERALD Q 4720	
EMQ		Glenn	Bell		
CHRC	General Manager – Environment & Planning	Peter	Day	PO Box 21 EMERALD Q 4720	
DETA	Principal Advisor	Shelley	Clarke		

B

----- SMS -----

From: +61429377121  
Sent: Dec 28, 2010 12:58 PM  
Subject: Flooding likely to reach 2008...

Flooding likely to reach 2008 levels & close Vince Lester Bridge. Commence preps in case of evacuation. Evac notices will be delivered to homes by SES/Council Cr Peter Maguire Mayor CHRC

----- SMS -----

From: +614444444444  
Sent: Dec 28, 2010 5:26 PM  
Subject: Flood info from CHRC-Situation...

Flood info from CHRC-Situation continually monitored-Vince Lester Bridge expected to close Wed PM-Emerlad evac centres open-Town Hall today & Ag College Wed.  
Cr Peter Maguire  
Mayor CHRC

----- SMS -----

From: +614444444444  
Sent: Dec 29, 2010 9:14 AM  
Subject: Vince Lester Bridge closed by 2pm...

Vince Lester Bridge closed by 2pm today. Flood equal to 2008 by Thursday. Expected to go higher by Friday. Evacuations will be necessary. Contact CHRC.  
Cr Peter Maguire  
Mayor CHRC

----- SMS -----

From: +61429377121  
Sent: Dec 29, 2010 10:02 PM  
Subject: Flood info from CHRC-Flood at...

Flood info from CHRC-Flood at Emerald same level as 2008 at 2am Thurs- Latest estimate flood peak Fri am-up to 0.5 metres higher than 2008.  
Cr Peter Maguire  
Mayor CHRC

----- SMS -----

From: +61429377121  
Sent: Dec 30, 2010 7:07 AM  
Subject: Urgent flood info for all Emerald...

Urgent flood info for all Emerald residents from CHRC. Please make emergency preparations. Expected peak at bridge 16.2m which is 0.8m above 2008 flood level.  
Cr Peter Maguire  
Mayor CHRC



----- SMS -----

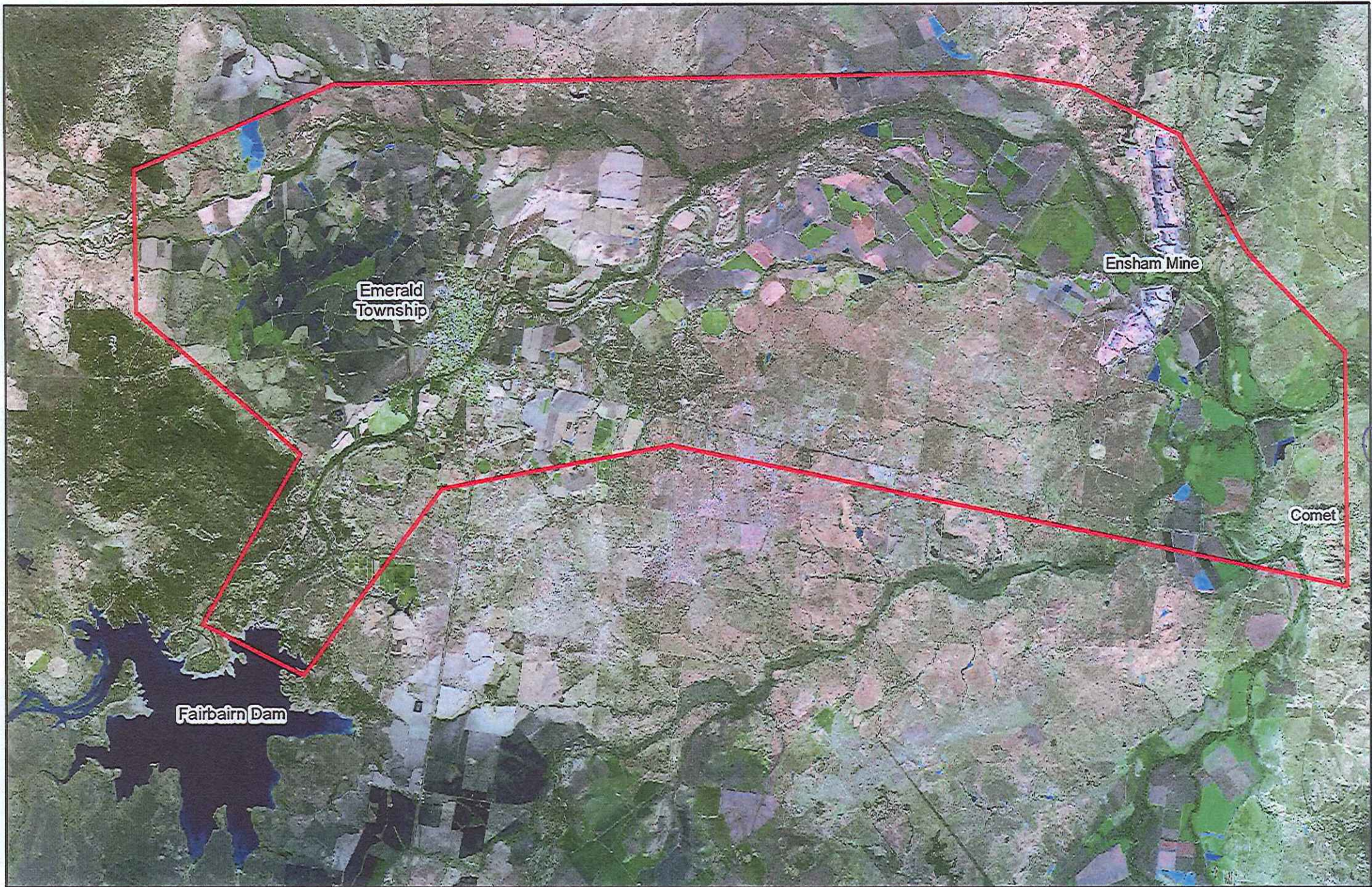
From: +61429377121  
Sent: Dec 30, 2010 10:01 AM  
Subject: Advice from CHRC,

Advice from CHRC, residents wishing to get vehicles to high ground proceed to SES complex, Emerald Downs Hill, Capella Road. Bus will transport back.  
Cr Peter Maguire  
Mayor CHRC

----- SMS -----

From: +61444444444  
Sent: Jan 3, 2011 5:31 PM  
Subject: CHRC Advice: Relevant info on...

CHRC Advice: Relevant info on insurance & cleanup supplies available on Council website or at council office. Go to [www.chrc.qld.gov.au](http://www.chrc.qld.gov.au) or ph:1300242686 Cr Peter Maguire Mayor CHRC



0 2.5 5 Kilometers

CHRC LDMG SMS Message Area for am 28/12/10



Central Highlands Regional Council  
PO Box 21  
EMERALD QLD 4720

## Briefing Note

December 3 2010  
10.30 am

FOR ALL MEDIA OUTLETS

**RE: Central Highlands Rain Event and Flooding**

The localised flooding event has been caused by the heavier than expected rainfall combined with very wet land conditions.

Water is getting away through the system slowly, due to the volume of water.

Nogoa River is currently at 9.2m and rising.

### **EMERALD**

#### **KIDD St Residents**

The Central Highlands Disaster Management Group is monitoring the situation. Water is slowly getting way through the LN1 drain.

Residents are NOT required to evacuate at this stage; however they should check their emergency plan, and ensure they have arrangements in place should the need to leave occur.

Council will continue to monitor the situation and keep you informed.

#### **DAWN Cres**

Residents are NOT required to evacuate at this stage; however they should check their emergency plan, and ensure they have arrangements in place should the need to leave occur.

Council will continue to monitor the situation and keep you informed.

#### **SELMA Road Residents**

Whilst there are no current evacuation notices for Selma Road, residents will be advised of any changes to the situation through the usual SUNWATER procedures in the event of major increases to the levels at the Fairbairn Dam spillway.

**Sandbags** will be available from the Council depot opposite the Saleyards after 10.00 am. There will be staff on hand to help people fill sandbags.

### **BLACKWATER**

The Capricorn Highway at Sagittarius Creek 800m west of Blackwater is closed again.

## **GEMFIELDS**

Report from SES

Water at the Gemfields has started to drop a little.

No access from Anakie to Sapphire.

Policeman's Creek – 800mm over the causeway

Three evacuation points have been set up for people:

- Rifle Range Club House
- Rubyvale Hotel
- Multipurpose Centre

SES are keeping in regular contact with people.

There is plenty of work for the SES to do with houses inundated and tarping damaged roofs.

Please call 132 500 for assistance.

Council is advising people not to drive unless absolutely necessary. A number of cars have already been caught in floodwaters, placing drivers and others at extreme risk.

The LDMG is also requesting people not to drive through flooded streets, as it can increase the volume of water spreading across the road and entering houses.

There have been a number of houses receive water through them

Continue to listen to the radio for information.

Council and Sunwater are monitoring the dam. (Currently at .9 over the spillway but the current rate of rise is slowing).

Residents should be aware that the dam has been designed to cope with inflows above 100%. The dam walls have been built to withstand spill volumes in excess of those currently being experienced.

Council will continue to update information on the website.

The LDMG will meet again at 4.00 pm this afternoon



Central Highlands Regional Council  
PO Box 21  
EMERALD QLD 4720

## Briefing Note

December 3 2010  
5.00 pm

### RE: Central Highlands Rain Event and Flooding

Members of the Local Disaster Management Group met this afternoon.

Conditions in Emerald and the Gemfields continued to ease through the day with water getting away slowly through the water systems.

There has been significant rain in the Retreat and Theresa Creek catchment areas. However indications are the water at Retreat Creek Sapphire is receding.

### EMERALD

#### Fairbairn Dam

It is expected that levels at the spillway over the dam will continue to slowly rise to about 2.5 m by Monday.

This will cause the Nogoia River to rise at Emerald to below minor flood level classification at the Vince Lester Bridge.

Residents should be aware that the dam has been designed to cope with very large inflows well above 100%. The dam walls have been built to withstand spill volumes well in excess of those currently being experienced.

The Department of Transport and Main Roads advise that there are currently no plans to close the Vince Lester Bridge as floodwaters are not expected to reach those levels. They are continuing to monitor the situation and will be ready to act should this situation change.

Road reports can be viewed at [www.131940.qld.gov.au](http://www.131940.qld.gov.au)

Rainfall conditions are not expected to change overnight.

The Comet River is rising. Theresa Creek on Gregory Highway is expected to cut the road.

A report from the Bureau of Meteorology advised that the rain is moving to the Dawson River catchment area.

## **GEMFIELDS**

SES are keeping in regular contact with people.

Organisations such as the Red Cross and Salvation Army will be going to Gemfields once access is available.

Council will have staff available to answer phone calls overnight. Phone 1300 242 686.

Please call 132 500 for assistance from the State Emergency Service.

Continue to listen to the radio for information.

Residents and visitors should need all road closure signs and drive to the conditions.

Council will continue to provide information about road closures on the website over the weekend as required. [www.chrc.qld.gov.au](http://www.chrc.qld.gov.au)

The LDMG will meet again at 9.00 am tomorrow, Saturday December 4 2010.

Monica Sidhu  
Manager Communications  
Central Highlands Regional Council  
Ph: [REDACTED]

Peter Maguire  
Chair LDMG  
Ph: [REDACTED]



Central Highlands Regional Council  
PO Box 21  
EMERALD QLD 4720

## Briefing Note

December 4 2010  
10:00 am

### **RE: Central Highlands Rain Event and Flooding**

Members of the Local Disaster Management Group met this morning.

### **EMERALD**

#### **Fairbairn Dam**

It is expected that levels at the spillway over the dam will continue to slowly rise to about 2.5 m. Tjos

This will only keep the Nogoa River at Emerald to below minor flood level classification at the Vince Lester Bridge.

The Department of Transport and Main Roads advise that there are currently no plans to close the Vince Lester Bridge as floodwaters are not expected to impact the bridge.

The Comet River is rising and is over the Capricorn Highway.

The Retreat and Theresa Creek have peaked.

Theresa Creek at the Gregory Highway is over the road and the road is closed.

A report from the Bureau of Meteorology advised that the rain is moving to the Dawson River catchment area and will cause major flooding.

#### **Railways**

There have been serious washouts affecting the ballasts on the railway network between Blackwater and Emerald. It is anticipated that the line will be operational again early next week.

#### **Sandbags**

Sandbags are available today from the Emerald saleyards .

#### **GEMFIELDS**

The situation is easing in Gemfields.

SES are keeping in regular contact with people.

Please call 132 500 for assistance from the State Emergency Service.

Continue to listen to the radio for information.

Residents and visitors should need all road closure signs and drive to the conditions.

Council will continue to provide information about road closures on the website over the weekend as required. [www.chrc.qld.gov.au](http://www.chrc.qld.gov.au)

Road reports can be viewed at [www.131940.qld.gov.au](http://www.131940.qld.gov.au)

The LDMG will maintain a watching brief over the situation.  
The LDMG will meet again if required tomorrow morning.

Monica Sidhu  
Manager Communications  
Central Highlands Regional Council  
Ph: [REDACTED]

Peter Maguire  
Chair LDMG  
Ph: [REDACTED]





Central Highlands Regional Council  
PO Box 21  
EMERALD QLD 4720

## Briefing Note

December 5 2010  
10:30 am

### **RE: Central Highlands Rain Event and Flooding**

Members of the Local Disaster Management Group met this morning.

#### **EMERALD**

There has been no significant rain in the area affecting current conditions.

#### **Fairbairn Dam**

It is expected that levels at the spillway over the dam will continue to slowly rise to around 2.0 m, peaking late Monday evening.

This will keep the Nogoa River at Emerald to below minor flood level of around 11 to 11 ½ metres.

The Department of Transport and Main Roads advise that there are currently no plans to close the Vince Lester Bridge as these flows expected to impact the bridge.

The Comet River is rising and is over the Capricorn Highway. This is expected to peak this afternoon, but may remain high from some time. The Capricorn Highway between Blackwater and Emerald will remain closed for the next few days.

The Retreat and Theresa Creek have peaked.

Theresa Creek at the Gregory Highway is over the road and the road is closed. The Theresa Creek is falling slowly.

It is hoped that this road will open in the next 48 hours.

The Department of Transport and Main Roads will advise of any heavy vehicle limits that may apply as roads open.

#### **Railways**

There have been serious washouts affecting the ballasts on the railway network between Blackwater and Emerald.

It is anticipated that the line will be operational again by Tuesday.

#### **GEMFIELDS**

The situation has eased in Gemfields.

There is a 5 tonne limit on the Highway between Anakie to Alpha and between Anakie and Sapphire.

### **ROLLESTON**

Rolleston continues to be inaccessible by road.

Please call 132 500 for assistance from the State Emergency Service.

Continue to listen to the radio for information.

Residents and visitors should need all road closure signs and drive to the conditions.

Council will continue to provide information about road closures on the website over the weekend as required. [www.chrc.qld.gov.au](http://www.chrc.qld.gov.au) Please be advised that we are currently experiencing technical difficulties causing delays in uploading information. Alternatives are:

Road reports can be viewed at [www.131940.qld.gov.au](http://www.131940.qld.gov.au) or  
Call the RACQ hotline 1300 130 595.

The Mayor of the Central Highlands Regional Council, Cr Peter Maguire said that the highest priority of the Council is ensuring essential provisions are available to the affected communities in the region. This will be through the reopening of the rail line Tuesday morning.

The Mayor advises that people should heed road closed signs and not drive through flooded creeks or roads.

The LDMG will maintain a watching brief over the situation.  
The LDMG will meet again if required tomorrow morning.

Monica Sidhu  
Manager Communications  
Central Highlands Regional Council  
Ph: [REDACTED]

Peter Maguire  
Chair LDMG  
Ph: [REDACTED]



Central Highlands Regional Council  
PO Box 21  
EMERALD QLD 4720

## Briefing Note

December 6 2010  
9:30 am

### RE: CENTRAL HIGHLANDS RAIN EVENT AND FLOODING

The Central Highlands Regional Council Mayor, Councillor Peter Maguire, issued the following statement this morning.

It is anticipated that the Department of Transport and Main Roads will reopen the Gregory Highway between Emerald and Capella later today, with traffic controls in place. Residents are reminded that access to Capella from Emerald is available by first heading west to Anakie and north to Rubyvale, than via Valaria to Capella.

The Capricorn Highway between Emerald and Blackwater is expected to reopen later today. Police and Transport and Main Roads officers are currently escorting trucks with urgent supplies through this area.

The Local Disaster Management Group will maintain a watching brief over the situation. From today until Wednesday evening the region is likely to experience showers and localised thunderstorms which may bring heavy showers of up to 50mm within a 24 hour period. This should ease by Thursday.

Further information will be sought from the Bureau of Meteorology later today and through the week.

#### **Fairbairn Dam**

Levels at the spillway over the dam have now peaked at around 1.9 m

This will keep the Nogoia River at Emerald to below minor flood level of around 11 to 11 ½ metres this afternoon.

This will not impact the Vince Lester Bridge.

#### **Railways**

There have been serious washouts affecting the ballasts on the railway network between Blackwater and Emerald.

It is anticipated that the line will be operational again by Tuesday, and further supplies will be brought in by rail late Tuesday to supplement the road transport deliveries.

## **GEMFIELDS**

The situation has eased in the Gemfields.

There is a 5 tonne limit on the Highway between Anakie to Alpha and between Anakie and Sapphire.

## **ROLLESTON**

Rolleston continues to be inaccessible by road.

Please call 132 500 for assistance from the State Emergency Service.

Continue to listen to the radio for information.

Residents and visitors should need all road closure signs and drive to the conditions.

Council will continue to provide information about road closures on the website as required. [www.chrc.qld.gov.au](http://www.chrc.qld.gov.au)

Road reports can be viewed at [www.131940.qld.gov.au](http://www.131940.qld.gov.au) or  
Call the RACQ hotline 1300 130 595.

The Mayor advises that people should heed road closed signs and not drive through flooded creeks or roads.

Monica Sidhu  
Manager Communications  
Central Highlands Regional Council  
Ph: [REDACTED]

Peter Maguire  
Chair LDMG  
Ph: [REDACTED]



Central Highlands Regional Council  
PO Box 21  
EMERALD QLD 4720

## Briefing Note

December 6 2010  
5:00 pm

### RE: CENTRAL HIGHLANDS RAIN EVENT AND FLOODING

The Department of Transport and Main Roads have reopened the Gregory Highway between Emerald and Capella at Theresa Creek, with traffic controls in place.

The Capricorn Highway between Emerald and Blackwater is open to all vehicles with traffic controls in place at the Comet River crossing.

Drivers are asked to use extreme caution when approaching these areas.

The region is likely to experience showers and localised thunderstorms which may bring heavy showers for the next few days.

This may mean that roads recently reopened may need to close quickly again. Council will continue to provide information in a timely manner should the situation change.

The Local Disaster Management Group will maintain a watching brief over the situation.

Further information will be sought from the Bureau of Meteorology later today and through the week.

Essential supplies including fresh produce have been brought through the road network.

#### Fairbairn Dam

Levels at the spillway over the dam peaked at around 1.9 m this morning.

The Nogoa River at Emerald peaked at a below minor flood level of around 11 to 11 ½ metres this afternoon.

#### GEMFIELDS

The situation has eased in the Gemfields. Representatives from the SES and community organisations are making contact with affected residents to provide support and information.

There is a 5 tonne limit on the Highway between Anakie to Alpha and between Anakie and Sapphire.

#### ROLLESTON

Rolleston continues to be inaccessible by road.

Please call 132 500 for assistance from the State Emergency Service.

Continue to listen to the radio for information.

Residents and visitors should heed all road closure signs and drive to the conditions.

Council will continue to provide information about road closures on the website as required. [www.chrc.qld.gov.au](http://www.chrc.qld.gov.au)

Road reports can be viewed at [www.131940.qld.gov.au](http://www.131940.qld.gov.au) or  
Call the RACQ hotline 1300 130 595.

The Mayor advises that people should heed road closed signs and not drive through flooded creeks or roads.

Monica Sidhu  
Manager Communications  
Central Highlands Regional Council  
Ph: [REDACTED]

Peter Maguire  
Chair LDMG  
Ph: [REDACTED]



Central Highlands Regional Council  
PO Box 21  
EMERALD QLD 4720

## Briefing Note

December 7 2010  
Midday

### RE: CENTRAL HIGHLANDS RAIN EVENT AND FLOODING

The Central Highlands Regional Council Mayor, Councillor Peter Maguire, issued the following statement this morning.

Based on the current weather forecasts, the Local Disaster Management Group is not concerned about widespread flooding affecting Emerald.

There are no expectations that the Vince Lester Bridge will close.

"We would not flood unless inches of rain fell in the Fairbairn Dam catchment area, and that is certainly not predicted.

The levels at the spillway have peaked, and are falling. The levels in Emerald at the bridge have peaked and are falling."

"We are monitoring the situation day and night, and would advise residents immediately if the situation changes. Information would be relayed through ABC radio as the official disaster broadcaster, as well as local radio, and Council's website.

"Our information is sourced from senior weather forecasters and hydrologists at the Bureau of Meteorology, and Sunwater, in addition to gaining on the ground data from locals."

Council will continue to provide information about current conditions and road closures on the website as required. [www.chrc.qld.gov.au](http://www.chrc.qld.gov.au)

Road reports can be viewed at [www.131940.qld.gov.au](http://www.131940.qld.gov.au) or  
Call the RACQ hotline 1300 130 595.

Councillor Peter Maguire  
Mayor, Central Highlands Regional Council  
Chair Central Highlands Local Disaster Management Group  
Ph: [REDACTED]



Central Highlands Regional Council  
PO Box 21  
EMERALD QLD 4720

## Briefing Note

December 8 2010  
10.30 am

### RE: CENTRAL HIGHLANDS RAIN EVENT AND FLOODING

The Central Highlands Regional Council Mayor, Councillor Peter Maguire, issued the following statement this morning.

The Local Disaster Management Group and Council are keeping a close eye on the heavy rain that is forecast for the Central West and Central Highlands for the weekend.

Indications are for possible showers and thunderstorms for the rest of the week, but Saturday is when the heavier falls will come.

We will continue to talk with the Bureau of Meteorology, Sunwater and other key agencies to determine the impact on communities in the Council area.

In the meantime, we would ask all residents to continue to listen to local radio for information about current local weather and road conditions.

Council will continue to provide information about current conditions and road closures on the website as required. [www.chrc.qld.gov.au](http://www.chrc.qld.gov.au)

Road reports can be viewed at [www.131940.qld.gov.au](http://www.131940.qld.gov.au) or  
Call the RACQ hotline 1300 130 595.

Councillor Peter Maguire  
Mayor, Central Highlands Regional Council  
Chair Central Highlands Local Disaster Management Group  
Ph: [REDACTED]





Central Highlands Regional Council  
PO Box 21  
EMERALD QLD 4720

## Briefing Note

December 10 2010  
4.30 pm

### RE: CENTRAL HIGHLANDS RAIN EVENT AND FLOODING

The Central Highlands Regional Council Mayor, Councillor Peter Maguire, issued the following statement this afternoon.

The Central Highlands Regional Council will maintain a watching brief on the weather over the weekend and will be ready to act should the need arise.

Widespread rain is expected, but we are still not sure what impact it will have on the region.

We will continue to talk with the Bureau of Meteorology, Sunwater and other key agencies.

In the meantime, we would ask all residents to continue to listen to local radio for information about current local weather and road conditions.

Heavy localised could cause some flash or local flooding which may mean we need to close some local roads again.

Please continue to be careful on the roads and exercise patience and caution.

Our staff did a great job last weekend, taking on additional shifts to answer phone calls well into the night from people enquiring about the event. Hopefully the situation will remain calm over the weekend, but I know our staff will respond again to serve their community should the need arise.

Council will continue to provide information about current conditions and road closures on the website as required. [www.chrc.qld.gov.au](http://www.chrc.qld.gov.au)

Road reports can be viewed at [www.131940.qld.gov.au](http://www.131940.qld.gov.au) or  
Call the RACQ hotline 1300 130 595.

Councillor Peter Maguire  
Mayor, Central Highlands Regional Council  
Chair Central Highlands Local Disaster Management Group  
Ph: [REDACTED]



Central Highlands Regional Council  
PO Box 21  
EMERALD QLD 4720

## Briefing Note

December 21 2010

### RE: CENTRAL HIGHLANDS RAIN EVENT AND FLOODING

The Central Highlands Regional Council Mayor, Councillor Peter Maguire, issued the following statement this afternoon.

Due to the rainfall experienced over the weekend, and based on current inflows, it is anticipated that the level of water going over the spillway at the Fairbairn Dam will peak at around 1.5 m late on Friday or early Saturday. This is less than the 1.88 m peak experienced earlier this month.

However, the John Gay Bridge at Emerald will continue to be impacted and will remain closed for the foreseeable future.

The community of Rolleston is again inaccessible by road.

People who are travelling for Christmas are asked to check road conditions and road closures before embarking on their journeys, as conditions are constantly changing.

Council will have information about our local roads updated on our website as the situation warrants.

Information can also be found on [www.131940.qld.gov.au](http://www.131940.qld.gov.au)

Drivers are asked to continue to exercise patience and drive to the conditions. At this time of the year, there are many people on the roads, and with road works and closures currently in place, please drive safely to your destination.

We are continuing to monitor the weather forecasts and impacts of rainfall and will keep the Central Highlands communities informed.

Councillor Peter Maguire  
Mayor, Central Highlands Regional Council  
Chair Central Highlands Local Disaster Management Group  
Ph: [REDACTED]



Central Highlands Regional Council  
PO Box 21  
EMERALD QLD 4720

## Briefing Note

December 22 2010

### CENTRAL HIGHLANDS REGION AND RAIN FORECASTS

The Central Highlands Regional Council Mayor, Councillor Peter Maguire, Councillor Kerry Hayes and Council officers received a briefing from the State Disaster Coordination Centre this morning regarding weather forecasts for the next few days.

The coastal regions between Cardwell and Mackay will receive significant rainfall. The impact in the Central Highlands is expected to be significantly less.

The Central Highlands area is forecast to receive its heaviest falls on Thursday and Friday, with showers and storms continuing through out the weekend.

Council advises that residents should be prepared for prolonged rain periods over the next few days.

"We may receive some moderate falls of up to 50 mm a day over a number of days, meaning the chances of flooding beyond that we have currently been experiencing are minimal," said the Mayor.

Based on the Bureau's information, the situation should ease early next week.

The dam is expected to peak over the spillway only slightly higher than the current estimate of 1.5 m.

Residents staying at home over the holiday period are encouraged to check on their neighbours and vulnerable friends and relatives to ensure they are adequately prepared and informed about the weather event.

People who are travelling for Christmas are asked to check road conditions and road closures before embarking on their journeys, as conditions are constantly changing.

Council will have information about our local roads updated on our website as the situation warrants.

Information can also be found on [www.131940.qld.gov.au](http://www.131940.qld.gov.au)

"Drivers are asked to continue to exercise patience and drive to the conditions. At this time of the year, there are many people on the roads, and with road works and closures currently in place, please drive safely to your destination.

"There may be local flash flooding in areas due to the rain, so take care and don't take unnecessary risks."

Council is continuing to monitor the weather forecasts and will receive another briefing tomorrow.

Councillor Peter Maguire  
Mayor, Central Highlands Regional Council  
Chair Central Highlands Local Disaster Management Group  
Ph: [REDACTED]



Central Highlands Regional Council  
PO Box 21  
EMERALD QLD 4720

## Briefing Note

December 23 2010

### RE: CENTRAL HIGHLANDS RAIN EVENT AND FLOODING

The Central Highlands Regional Council Mayor, Councillor Peter Maguire, issued the following statement this afternoon Thursday.

Due to the rainfall over the past 24 hours and those expected to be experienced leading in to this Christmas weekend and based on current inflows, it is anticipated that the level of water going over the spillway at the Fairbairn Dam will now peak at around 2 m or less late on Friday or early Saturday.

Bureau of Meteorology forecasts indicate that currently the heaviest falls are likely on Boxing Day Sunday and on Monday. Severe weather warnings will be issued for most of Queensland and updated every 6 hours. Check [www.bom.gov.au](http://www.bom.gov.au) for updates on this information.

In Emerald the John Gay Bridge will continue to be closed and will remain closed for the foreseeable future. The Comet River is expected to rise but not to the levels of a couple of weeks ago. The Dawson River is expected to rise considerably in the next few days and people need to be mindful of that developing situation as well.

The community of Rolleston is still inaccessible by road. The SES flood boat will not operate for people to cross the flooded creeks on Christmas Day unless an emergency occurs and then the SES can be activated.

A further reminder that people who are traveling for Christmas are asked to check road conditions and road closures before embarking on their journeys. The Capricorn Highway to Rockhampton is currently closed however this can change rapidly. With so much rainfall in already full rivers, creeks and watercourses the situation could change almost hourly. Council will have information about our local roads updated on our website as the situation warrants.

Information can also be found on [www.131940.qld.gov.au](http://www.131940.qld.gov.au)

Drivers are asked to continue to exercise patience and drive to the conditions. At this time of the year, there are many people on the roads, and with road works and closures currently in place, please drive safely to your destination.

We are continuing to monitor the weather forecasts and impacts of rainfall and will keep the Central Highlands communities informed.

**Councillor Peter Maguire**  
**Mayor, Central Highlands Regional Council**  
**Chair Central Highlands Local Disaster Management Group**  
Ph: [REDACTED]



Central Highlands Regional Council  
PO Box 21  
EMERALD QLD 4720

## Briefing Note

Christmas Eve December 24 2010

### CENTRAL HIGHLANDS RAIN EVENT AND FLOODING

The Central Highlands Regional Council Mayor, Councillor Peter Maguire, issued the following statement this afternoon Christmas Eve.

The last 24 hours has seen a lessening in rainfall across the region. The Fairbairn Dam is still expected to peak in the next day or two at around less than 2 metres and as a result have no significant impact on any properties.

The weather in the next few days may still bring moderate to heavy falls over the region which may impact on creeks and rivers rising and may cut roads temporarily. Further north around Mackay are expected to receive substantial falls. Council and Main Roads will continue to update our websites with the latest road information.. Check [www.bom.gov.au](http://www.bom.gov.au) for updates on weather information in particular the severe weather warnings that are being updated every 6 hours.

The John Gay Bridge will continue to be closed and will remain closed for days to come. The Comet River is going to be in Major flood and likely to get to around 11 metres or maybe a little more sometime late tomorrow (Christmas Day). This will bring water close to the road level at the lowest point at Comet. The Dawson River is continuing to be monitored as well so people need to be watchful of all of these potential river rises.

Rolleston is unfortunately still inaccessible by road. The SES flood boat will not operate for people to cross the flooded creeks on Christmas Day unless an emergency occurs and then the SES can be activated.

A further reminder that people who are traveling for Christmas are asked to check road conditions and road closures before embarking on their journeys. The Capricorn Highway to Rockhampton is again open with extreme care and speed restrictions in place in a number of places. As I stated yesterday with so much rainfall in already full rivers, creeks and watercourses the situation could change almost hourly.

Road information updates can be found on [www.131940.qld.gov.au](http://www.131940.qld.gov.au) and [www.chrc.qld.gov.au](http://www.chrc.qld.gov.au)

Drivers are asked to continue to exercise patience and drive to the conditions. At this time of the year, there are many people on the roads, and with road works and closures currently in place, please drive safely to your destination.

We are continuing to monitor the weather forecasts and impacts of rainfall and will keep the Central Highlands communities informed. An update will be issued every day over Christmas.

Merry Christmas

Councillor Peter Maguire  
Mayor, Central Highlands Regional Council  
Chair Central Highlands Local Disaster Management Group  
Ph: [REDACTED]





Central Highlands Regional Council  
PO Box 21  
EMERALD QLD 4720

## Briefing Note

Christmas Day December 25 2010

### CENTRAL HIGHLANDS RAIN EVENT AND FLOODING

The Central Highlands Regional Council Mayor, Councillor Peter Maguire, issued the following statement today Christmas Day.

In the past 24 hours relatively small falls have been received across the council region. We continue to monitor the whole situation which can change in hours. Most will be aware that overnight a Tropical Cyclone Tasha formed up north near Cairns and has crossed the coast. The cyclone warning is now cancelled and it is now a rain depression.

In the next few days, and in particular commencing Sunday, the forecast is for moderate to heavy falls over the region as a result of the ex Cyclone Tasha rain depression. This will clearly impact on creeks and rivers and may cut roads temporarily.

Based on the rainfall to date the Fairbairn Dam is expected to peak at around the 1.8 metre mark which is about the same as a couple of weeks ago and as previously advised is not expected to have any significant impact on any properties. Of course this changes if we have more rainfall in the catchment.

Council and Main Roads will continue to update our websites with the latest road information. Check [www.bom.gov.au](http://www.bom.gov.au) for updates on weather information in particular the severe weather warnings that are being updated every 6 hours and now replace also the cyclone advice.

As previously advised the John Gay Bridge is still closed and will remain closed for days to come. The Comet River is still rising and is heading to around the 11 metres as I write this so please continue to look out for it. The Dawson River continues to be monitored as well so please be careful of all rivers and roads and any change in the situation that may occur.

Rolleston is as previously advised still inaccessible by road. The SES flood boat will not operate today (Christmas Day) for people to cross the flooded creeks unless an emergency occurs and then the SES can be activated.

A further reminder that people who are traveling for Christmas are asked to check road conditions and road closures before embarking on their journeys. The Capricorn Highway to Rockhampton is still open with extreme care and speed restrictions in place in a number of places. I understand the Capricorn Highway from Emerald –Alpha is now open with caution at the Belyando River however the Highway is closed at Jericho with flooding of the Jordan River.

As I stated yesterday with so much rainfall in already full rivers, creeks and watercourses the situation could change almost hourly.

Road information updates can be found on [www.131940.qld.gov.au](http://www.131940.qld.gov.au) and [www.clirc.qld.gov.au](http://www.clirc.qld.gov.au)

Drivers are asked to continue to exercise patience and drive to the conditions. At this time of the year, there are many people on the roads, and with road works and closures currently in place, please drive safely to your destination.

We are continuing to monitor the weather forecasts and impacts of rainfall and will keep the Central Highlands communities informed. A further update will be issued tomorrow.

Merry Christmas

Councillor Peter Maguire  
Mayor, Central Highlands Regional Council  
Chair Central Highlands Local Disaster Management Group  
Ph: [REDACTED]



Central Highlands Regional Council  
PO Box 21  
EMERALD QLD 4720

## Briefing Note

Boxing Day December 26 2010

### CENTRAL HIGHLANDS RAIN EVENT AND FLOODING

The Central Highlands Regional Council Mayor, Councillor Peter Maguire, issued the following statement today Boxing Day.

Rainfall over the past 24 hours in the region has not caused any further problems for many however as highlighted yesterday problems with the Capricorn Highway the Comet River and the Dawson River were likely to cause disruption to the traveling public and that has eventuated.

The Capricorn Highway is open to Bluff only and now is closed between there and Dingo and again at the Dawson River east of Duaringa. This may be a concern for a few days yet and of course all of this information depends on rainfall in coming days. In addition the highway continues to be closed at Jericho due to the flooded Jordan River.

The Fairbairn Dam has risen a little more than expected and currently is 1.87 metres over the spillway. With current flows it is not expected to go above 2 metres. Once again this will change if we have more rainfall in the catchment. With all the river systems in flood we may encounter some different dynamics in coming days.

The weather forecast for the next 24-48 hours is for some significant rainfall mainly in the southern and eastern part of the Central Highlands. This is likely to impact particularly on the Comet and Dawson River catchments. Check [www.bom.gov.au](http://www.bom.gov.au) for updates on weather information in particular the severe weather warnings that are being updated every 6 hours.

Council will continue to update our website with the latest road information. Previous advice regarding the John Gay Bridge is that it is still closed and will remain closed for days to come.

Rolleston is still inaccessible by road. The SES flood boat will operate in an emergency.

A further reminder that people who are traveling are asked to check road conditions and road closures before embarking on their journeys. As I stated yesterday with so much rainfall in already full rivers, creeks and watercourses the situation could change almost hourly.

Road information updates can be found on [www.131940.qld.gov.au](http://www.131940.qld.gov.au) and [www.chrc.qld.gov.au](http://www.chrc.qld.gov.au)

Drivers are asked to continue to exercise patience and drive to the conditions. At this time of the year, there are many people on the roads, and with road works and closures currently in place, please drive safely to your destination.

We are continuing to monitor the weather forecasts and impacts of rainfall and will keep the Central Highlands communities informed. An update will be issued every day over Christmas.

Go The Aussies.

Councillor Peter Maguire  
Mayor, Central Highlands Regional Council  
Chair Central Highlands Local Disaster Management Group  
Ph: [REDACTED]



Central Highlands Regional Council  
PO Box 21  
EMERALD QLD 4720

## Media Release

Contact: Peter Maguire  
Phone: [REDACTED]

FOR IMMEDIATE RELEASE  
Date: Monday, December 27  
Time: 10.30am

THE Bureau of Meteorology had advised Emerald is facing a minor flood height of just under 3.5 metres over the spillway at the Fairbairn Dam within the next 72 hours.

Central Highlands Regional Council Mayor Peter Maguire said the Local Government Disaster Group was activated this morning as levels were expected to peak at 14 metres in Emerald without further rain. Councillor Maguire said he had been advised by BOM forecasters falls of up to 240mm were recorded overnight on Sunday in the headwaters of the Nogoia and Comet rivers, with the possibility of further moderate to heavy rain across the region until Wednesday.

“The water has gone into the top of the catchment area and it’s going to take a little time to get into the dam, and at this point, the bureau is saying there will be a minor flood level just under 3.5m and 14m at

Emerald, but this situation is dependent on the next two days,” he said.

“The situation can change rapidly if we get more rain close to the dam.”

Residents who may be impacted by the rising waters will be notified by council personnel.

*For further details or to arrange an interview please contact:*

Name Cr Peter Maguire, Mayor

Central Highlands Regional Council

Phone [REDACTED]



Central Highlands Regional Council  
PO Box 21  
EMERALD QLD 4720

## Briefing Note to Emerald Residents

Tuesday December 28, 2010

### CENTRAL HIGHLANDS RAIN EVENT AND FLOODING

The Central Highlands Regional Council Mayor, Councillor Peter Maguire, issued the following statement today.

The following updated information is provided as a result of further advice from the Bureau of Meteorology (BOM). In the past 24 hours no significant rain has fallen across the region. There is the possibility of additional rain today, but it is expected to move north on Wednesday.

BOM predictions are that flood levels in Emerald will reach those levels recorded in 2008. The Local Disaster Management Group will provide appropriate evacuation notices to affected residents.

Check [www.bom.gov.au](http://www.bom.gov.au) for updates on weather information in particular the severe weather warnings that are being updated every 6 hours.

It is important for residents that you commence making preparations in case of flooding and evacuation. Please call the SES 132500 if assistance is required. However the council and the SES have limited resources, in particular people to assist as many are away on holidays so please, and I know this would happen, assist others where you may be able.

Here are six simple tasks to assist in preparing your household for natural hazards and emergencies:

- Prepare an Emergency Plan and Prepare for Evacuation.
- Prepare an Emergency Kit.
- Prepare your home.
- Tune into Warnings.
- Check your Neighbours.
- Look after your Pets.

The Local Disaster Management Group was activated on Monday. A number of requests for assistance have been raised through the District Disaster Committee in Rockhampton. These include the need for bedding in the event that a number of people may need assistance with accommodation as a result of evacuation. These centers in the first instance will be located at the Emerald Agricultural College on the eastern side and at the Town Hall on the western side of the river. Other locations have been identified and can be set up if the need arises.

The John Gay Bridge is still closed and will remain closed for days to come. The Comet River is still rising and is heading to a significant flood level and is being closely monitored. The Dawson

River has closed the highway and the worst case scenario is that all roads in and out of Emerald will be closed when the Nogoa River Bridge goes over, expected to be late on Wednesday. Theresa Creek was closed to all vehicles at 8am this morning, cutting the Gregory Highway to Capella until further notice.

Rolleston is, as previously advised, still inaccessible by road. The SES flood boat is operating to move people around but a serious flood is affected this township as well.

A further reminder that people who are traveling in coming days are asked to check the road conditions and road closures before embarking on their journeys.

Road information updates can be found on [www.131940.qld.gov.au](http://www.131940.qld.gov.au) and [www.chrc.qld.gov.au](http://www.chrc.qld.gov.au)

Drivers are asked to continue to exercise patience and drive to the conditions. At this time of the year, there are many people on the roads, and with road works and closures currently in place, please drive safely to your destination.

We are continuing to monitor the weather forecasts and impacts of rainfall and will keep the Central Highlands communities informed. An update will be issued every day over Christmas and leading into New Year.

Councillor Peter Maguire  
Mayor, Central Highlands Regional Council  
Chair Central Highlands Local Disaster Management Group  
Ph: [REDACTED]





Central Highlands Regional Council  
PO Box 21  
EMERALD QLD 4720

**NOTICE TO BUSINESSES/RESIDENTS**

**TOYWORLD, CENTRO EMERALD MARKET PLAZA, KALARAH  
COURT, THE LINKS**

This is an official advice that due to the likelihood of flooding/inundation of your home/premises, Ergon Energy on the instructions of the Local Disaster Management Group will be turning the power off to your premises by 5.30pm tomorrow (Wednesday 29 December 2010).

If you have any further queries in regard to this issue please contact Council by telephoning 1300 242 686.



Central Highlands Regional Council  
PO Box 21  
EMERALD QLD 4720

## **NOTICE TO RESIDENTS**

### **WALDBY COURT**

This advice from the Local Disaster Management Group is requiring you as a resident of Waldby Court, that you need to evacuate and make safe your personal infrastructure and belongings by early evening today (Tuesday 28 December 2010).

We expect flood water will be over Riverview Terrace during the evening and will close your exit from Waldby Court and access to Riverview Street.

This is an official notice also to advise you that your home/premises will have power disconnected from it by Ergon Energy under instructions of the Local Disaster Management Group tomorrow morning (Wednesday 29 December 2010) at 9.00am.

If you have any further queries in regard to this issue please contact Council by telephoning 1300 242 686.



Central Highlands Regional Council  
PO Box 21  
EMERALD QLD 4720

## Briefing Note to Emerald Residents

Wednesday December 28 2010

### CENTRAL HIGHLANDS RAIN EVENT AND FLOODING

The Central Highlands Regional Council Mayor, Councillor Peter Maguire, issued the following statement today.

It is important for residents that you commence making preparations in case of flooding and evacuation. Please call the SES 132500 if assistance is required. However the council and the SES have limited resources, in particular people to assist, as many are away on holidays so please, and I know this would happen, continue to assist others where you may be able.

Here are four simple tasks to assist in preparing your household for natural hazards and emergencies:

- Prepare an Emergency Plan and Prepare for Evacuation.
- Prepare an Emergency Kit.
- Prepare your home.
- Tune into Warnings.
- Check your Neighbours.
- Look after Pets

The following updated information is provided as a result of further advice from the Bureau of Meteorology (BOM). In the past 24 hours no significant rain has fallen across the region. INSERT

Check [www.bom.gov.au](http://www.bom.gov.au) for updates on weather information in particular the severe weather warnings that are being updated every 6 hours.

The Local Disaster Management Group has been activated and the operations centre has been manned 24 hours a day. All emergency services organizations have flown in extra personnel from around the state to assist. Bedding for the evacuation centres has been confirmed sourced and centres are set up at the Town Hall in Emerald and also today at the Emerald Agricultural College. Other locations are identified and can be set up if the need arises.

These centres will be run by the Red Cross and assisted by many organizations including the Salvation Army as well as local people. Please understand everyone are volunteers and will be doing their very best to assist.

The John Gay Bridge is still closed and will remain closed for days to come. The Comet River is still rising and is heading to a significant flood level and is being closely monitored. The Dawson River has closed the highway and in fact worse case scenario is that all roads in and out of Emerald will be closed when the Nogoia River Bridge goes over. Retreat and Theresa Creeks north of Emerald are currently closed and the Comet River Bridge will close around Friday at this stage.

Rolleston is as previously advised still inaccessible by road. The SES flood boat is operating to move people around but a serious flood has affected this township as well. Floodwaters are currently receding and lots of cleanup will be required there when the waters finally go down.

A further reminder that people who are traveling in coming days are asked to check the road conditions and road closures before embarking on their journeys.

Road information updates can be found on [www.131940.qld.gov.au](http://www.131940.qld.gov.au) and [www.chrc.qld.gov.au](http://www.chrc.qld.gov.au)

Drivers are asked to continue to exercise patience and drive to the conditions. At this time of the year, there are many people on the roads, and with road works and closures currently in place, please drive safely to your destination.

We are continuing to monitor the weather forecasts and impacts of rainfall and will keep the Central Highlands communities informed. An update will be issued every day over Christmas and leading into New Year.

Councillor Peter Maguire  
Mayor, Central Highlands Regional Council  
Chair Central Highlands Local Disaster Management Group  
Ph: [REDACTED]



Central Highlands Regional Council  
PO Box 21  
EMERALD QLD 4720

## Briefing Note to Emerald Residents

Wednesday December 28 2010

### CENTRAL HIGHLANDS RAIN EVENT AND FLOODING

The Central Highlands Regional Council Mayor, Councillor Peter Maguire, issued the following statement today.

As of 7.30 am this morning advice to all residents is the following:

1. The Vince Lester Bridge will close at 2.00pm today, Wednesday 29<sup>th</sup> December 2010.
2. Between midnight tonight Wednesday 29<sup>th</sup> December and 4.00am Thursday 30<sup>th</sup> December water will come across behind Epic (QRI) under Railway and down Morton Park.
3. Thursday 30<sup>th</sup> December 5.00pm to midnight, water will be across the western highway on the road to Anakle and head down behind Western Industrial Estate, saleyards and Hogans Road.
4. Early Friday 31<sup>st</sup> December water will cross the highway at LN1 drain on Hospital Road near racecourse.
5. Water should peak at the Nogoia River approximately midday Friday 31<sup>st</sup> December 300mm (12 inches/1 foot) above the 2008 level. This may close rail access.

**At these projected levels more houses and businesses, particularly on the western side of the Nogoia River are likely to be impacted by flooding and inundation. The local Disaster Management Group will be recommending evacuations for those people identified as being at risk.**

It is important for residents that you commence making preparations in case of flooding and evacuation. Please call 132500 if assistance is required. However the council and the SES have limited resources, in particular people to assist, as many are away on holidays so please, and I know this would happen, continue to assist others where you may be able.

Here are four simple tasks to assist in preparing your household for natural hazards and emergencies:

Prepare an Emergency Plan and Prepare for Evacuation.

Prepare an Emergency Kit.  
Prepare your home.  
Tune into Warnings.  
Check your Neighbours.  
Look after Pets

The following updated information is provided as a result of further advice from the Bureau of Meteorology (BOM). In the past 24 hours no significant rain has fallen across the region. INSERT

Check [www.bom.gov.au](http://www.bom.gov.au) for updates on weather information in particular the severe weather warnings that are being updated every 6 hours.

The Local Disaster Management Group has been activated and the operations centre has been manned 24 hours a day. All emergency services organizations have flown in extra personnel from around the state to assist. Bedding for the evacuation centres has been confirmed and sourced and centres are set up at the Town Hall in Emerald and also today at the Emerald Agricultural College. Other locations are identified and can be set up if the need arises.

These centres will be run by the Red Cross and assisted by many organizations including the Salvation Army as well as local people. Please understand everyone are volunteers and will be doing there very best to assist.

The John Gay Bridge is still closed and will remain closed for days to come. The Comet River is still rising and is heading to a significant flood level and is being closely monitored. The Dawson River has closed the highway and in fact worse case scenario is that all roads in and out of Emerald will be closed when the Nogoia River Bridge goes over. Retreat and Theresa Creeks north of Emerald are currently closed and the Comet River Bridge is closed and may peak Friday.

A further reminder that people who are traveling in coming days are asked to check the road conditions and road closures before embarking on their journeys.

Road information updates can be found on [www.131940.qld.gov.au](http://www.131940.qld.gov.au) and [www.chrc.qld.gov.au](http://www.chrc.qld.gov.au)

Drivers are asked to continue to exercise patience and drive to the conditions. At this time of the year, there are many people on the roads, and with road works and closures currently in place, please drive safely to your destination.

We are continuing to monitor the weather forecasts and impacts of rainfall and will keep the Central Highlands communities informed. An update will be issued every day over Christmas and leading into New Year.

Councillor Peter Maguire  
Mayor, Central Highlands Regional Council  
Chair Central Highlands Local Disaster Management Group



Central Highlands Regional Council  
PO Box 21  
EMERALD QLD 4720

29<sup>th</sup> December 2010

## **NOTICE TO RESIDENTS**

**Emerald**

### **URGENT EVACUATION NOTICE**

This advice from the Local Disaster Management Group is requiring you as a resident of a part of Emerald with potential for dwelling inundation to evacuate and make safe your personal infrastructure and belongings by 5.00pm due to impending flood waters.

If you are able to stay with friends or relatives that is fine... However it is essential that you register at the Emerald Town Hall. If you are unable to stay with friends or relatives the town hall facility has been designated as an Emergency Evacuation Centre and registration point. Pets will be able to be catered for at the Emerald State School (behind the town hall).

Preparations include raising items from the floor, securing valuables, emptying contents from your fridge & freezer, turn off the power at the mains and secure your house.

Please ensure to take with you any medications you may need and if you go to an evacuation centre also take toiletry & bedding if able.

If you have any further queries in regard to this issue please contact Council by telephoning 1300 242 686.

Cr Peter Maguire  
Chair  
Local Disaster Management Group



Central Highlands Regional Council  
PO Box 21  
EMERALD QLD 4720

29<sup>th</sup> December 2010

## **NOTICE TO RESIDENTS**

**Emerald**

### **URGENT EVACUATION NOTICE**

This advice from the Local Disaster Management Group is requiring you as a resident of a part of Emerald with potential for dwelling inundation to evacuate and make safe your personal infrastructure and belongings by 5.00pm due to impending flood waters.

If you are able to stay with friends or relatives that is fine... However it is essential that you register at the Emerald Agricultural College. If you are unable to stay with friends or relatives the Emerald Agricultural College has been designated as an Emergency Evacuation Centre and registration point. Pets will be able to be catered for.

Preparations include raising items from the floor, securing valuables, emptying contents from your fridge & freezer, turn off the power at the mains and secure your house.

Please ensure to take with you any medications you may need and if you go to an evacuation centre also take toiletry & bedding if able.

If you have any further queries in regard to this issue please contact Council by telephoning 1300 242 686.

Cr Peter Maguire  
Chair  
Local Disaster Management Group





Central Highlands Regional Council  
PO Box 21  
EMERALD. QLD. 4720

## Briefing Note to Emerald Residents

Wednesday December 29, 2010

The Central Highlands Regional Council Mayor, Councillor Peter Maguire, issued the following statement today.

### POTENTIAL INUNDATION ADVICE

THE flood height is estimated to get to 300mm above the 2008 flood levels.

The red shaded areas on the attached map show areas where water may be present in the next 30 hours.

It does not mean houses and businesses will be inundated, but this is possible.

The Central Highlands Regional Council is relying on residents making their decisions about staying or leaving their dwellings if water is getting to the levels where it is going to inundate the home.

We are endeavoring to deliver evacuation orders for potential dwelling inundations however please ensure that you protect your personal safety and that of your family if you have not been officially advised. If you have concerns about your personal safety, please make your way to the official evacuation centres of Emerald Town Hall and the Australian Agricultural College.

The Harvest Life Church is now an assembly point for residents on the southside.

The estimated time of closure for the Vince Lester Bridge is now 4.30pm 29<sup>th</sup> Dec



**Councillor Peter Maguire**  
**Mayor, Central Highlands Regional Council**  
**Chair Central Highlands Local Disaster Management**  
**Group**  
Ph: [REDACTED]



Central Highlands Regional Council  
PO Box 21  
EMERALD QLD 4720

# **URGENT**

## **Briefing Note to Emerald Residents**

### **Please make necessary preparations all areas.**

Thursday December 29 2010

#### **CENTRAL HIGHLANDS RAIN EVENT AND FLOODING**

The Central Highlands Regional Council Mayor, Councillor Peter Maguire, issued the following statement today.

As of 6.30 am this morning advice to all residents is the following:

- 1. Expected peak at the bridge is up to 16.2 metres sometime Friday which is 0.8 metre above 2008.**
2. Water has been slower to get around the western side of town but will now occur during daylight hours which I believe will make it easier to manage for everyone. It will rise quickly in the northern and western area in the next few hours.
3. Water is across the western highway to Anakie as expected
4. Late afternoon today water will cross the highway at LN1 drain on Hospital Road near racecourse.
5. The railway bridge access will be lost today and likely to stay out for a couple of days and until inspections are done on the bridge.
6. Sandbagging is taking place. There is sand and bags located and available at Doug Slack Concrete site on Slack Drive on the south side, and at the Racecourse on Racecourse Road.
7. Where there is inundation in areas served by underground power, it is expected the power will be turned off for safety reasons. Power could also go off in other areas.
8. There is potential in some areas for sewerage to come out up of wastes in inundated areas. Floodwater could be contaminated so do not swim or enter floodwaters.

**As indicated yesterday, at these projected levels, more houses and businesses, particularly on the western side of the Nogoia River is likely to be impacted by flooding and inundation. The local Disaster Management Group will be coordinating evacuations for those people identified as being at risk. The LDMG**

**will place a map on the website indicating times at which people need to evacuate in northern and southern sides.**

It is important for residents that you commence making preparations in case of flooding and evacuation. Please call 132500 if assistance is required. However the council and the SES have limited resources, in particular people to assist, as many are away on holidays so please, and I know this would happen, continue to assist others where you may be able.

Here are four simple tasks to assist in preparing your household for natural hazards and emergencies:

- Prepare an Emergency Plan and Prepare for Evacuation.
- Prepare an Emergency Kit.
- Prepare your home.
- Tune into Warnings.
- Check your Neighbours.
- Look after Pets

The following updated information is provided as a result of further advice from the Bureau of Meteorology (BOM). In the past 24 hours no significant rain has fallen across the region. INSERT

Check [www.bom.gov.au](http://www.bom.gov.au) for updates on weather information in particular the severe weather warnings that are being updated every 6 hours.

The Local Disaster Management Group has been activated and the operations centre has been manned 24 hours a day. All emergency services organizations have flown in extra personnel from around the state to assist. Bedding for the evacuation centres has been confirmed and sourced and centres are set up at the Town Hall in Emerald and also today at the Emerald Agricultural College. Other locations are identified and can be set up if the need arises.

These centres will be run by the Red Cross and assisted by many organizations including the Salvation Army as well as local people. Please understand everyone are volunteers and will be doing their very best to assist.

Road information updates can be found on [www.131940.qld.gov.au](http://www.131940.qld.gov.au) and [www.chrc.qld.gov.au](http://www.chrc.qld.gov.au)

We are continuing to monitor the weather forecasts and impacts of rainfall and will keep the Central Highlands communities informed. An update will be issued every day over Christmas and leading into New Year.

Councillor Peter Maguire  
Mayor, Central Highlands Regional Council  
Chair Central Highlands Local Disaster Management Group



Central Highlands Regional Council  
PO Box 21  
EMERALD QLD 4720

## Briefing Note to Emerald Residents

Thursday, December 30, 2010

The Central Highlands Regional Council Mayor, Councillor Peter Maguire, issued the following statement today Thursday.

This briefing refers to the flood inundation maps released today and yesterday.

### **INUNDATION ADVICE**

THE flood height is estimated to get to 800mm or 0.8 metres above the 2008 flood levels to a peak of 16.2 metres

**Residents in the red shaded area from yesterdays map 1 need to evacuate now to the Town Hall. Todays map 2 indicates where water may be present in the next 24 hours.**

It does not mean houses and businesses will be inundated, but this is a possibility.

The Central Highlands Regional Council is relying on residents making their decisions about staying or leaving their dwellings if water is getting to the levels where it is going to inundate the home.

We are endeavoring to deliver evacuation orders for potential dwelling inundations however please ensure that you protect your personal safety and that of your family if you have not been officially advised.

If you have concerns about your personal safety, please make your way to the official evacuation centres of Emerald Town Hall and the Australian Agricultural College.

The Harvest Life Church is now an assembly point for residents on the southside.

ABC radio is the official station for emergency information. Please continue to monitor this station and other local stations for information.

**Councillor Peter Maguire  
Mayor, Central Highlands Regional Council  
Chair Central Highlands Local Disaster Management  
Group**



Central Highlands Regional Council  
PO Box 21  
EMERALD QLD 4720

# **URGENT**

## **Briefing Note to Emerald Residents**

### **Please make necessary preparations all areas.**

Thursday December 30 2010

#### **CENTRAL HIGHLANDS FLOODING**

The Central Highlands Regional Council Mayor, Councillor Peter Maguire, issued the following statement this afternoon.

As of 5.00 pm this afternoon, the following advice is issued to all residents:

- 1. Expected peak at the bridge is approximately 16.0 metres around midnight tonight, which is 0.6 m above the 2008 peak, but 0.2 less than previously indicated.**
- 2. Residents in north Emerald should expect larger rises tonight of up to 60cm before the peak occurs at around 6.00 am.**
- 3. There are dozens of additional police in Emerald to assist with operations and provide additional surveillance in the evacuated areas.**
- 4. Southern and central areas will experience rises of up to 20 cm overnight, peaking at around midnight tonight.**
- 5. Evacuation centres have been established at the Town Hall in Emerald and at the Emerald Agricultural College. A further evacuation centre is being set up at St Patrick's School.**
- 6. Around 700 people have registered with the evacuation centres in the central areas. Many of these people are staying with family and friends, with only around 130 people located in the Town Hall.**
- 7. These centres are being operated by the Red Cross, with assistance from many other organisations including the Salvation Army and other local groups. Please support these volunteers who are doing their very best to assist our community.**

8. Where there is inundation in areas served by underground power, it is expected the power will be turned off for safety reasons. Power may also go off in other areas.
9. There is potential in some areas for sewerage to come out up of wastes in inundated areas. Floodwater could be contaminated so do not swim or enter floodwaters.
10. The Premier, Anna Bligh, and Minister for Emergency Services, Neil Roberts visited the area today.
11. The Local Disaster Management Group is in discussions to arrange food resupplies to all communities.

It is important for residents to commence making preparations in case of flooding and evacuation. Please call the SES on 132 500 if assistance is required. Council and the SES have limited resources, with many people away on holidays. Please, continue to assist others where you can.

Here are some simple tasks to assist in preparing your household for natural hazards and emergencies:

- Prepare an Emergency Plan and Prepare for Evacuation.
- Prepare an Emergency Kit.
- Prepare your home.
- Tune in to Warnings.
- Check your Neighbours.
- Look after Pets

Road information updates can be found on [www.131940.qld.gov.au](http://www.131940.qld.gov.au) and [www.chrc.qld.gov.au](http://www.chrc.qld.gov.au)

We are continuing to monitor the weather forecasts and impacts of rainfall and will keep the Central Highlands communities informed. Updates will continue to be issued on a daily basis.

Councillor Peter Maguire  
Mayor, Central Highlands Regional Council  
Chair Central Highlands Local Disaster Management Group





Central Highlands Regional Council  
PO Box 21  
EMERALD QLD 4720

# **URGENT**

## **Briefing Note to Emerald Residents**

### **Please make necessary preparations all areas.**

Friday December 31 2010

#### **CENTRAL HIGHLANDS FLOODING**

The Central Highlands Regional Council Mayor, Councillor Peter Maguire, issued the following statement this morning.

As of 8.00 am, the following advice is issued to all residents:

1. The Nogoa River peaked at the bridge in Emerald at 16.0 m at 11.30 pm last night. It will be late today before peaks are reached on the north side of town.  
It is expected that the peak will hold for the next 12 hours at least before falling very slowly Saturday .  
Rises of up to 200mm can still be expected downstream from the Vince Lester bridge, in the far norther section of town over the next 14 hours.  
**It is important that people do not drive through the town today and for the next few days unless absolutely necessary, to reduce the likelihood of water entering houses.**
2. The rail bridge should be accessible for inspection on Sunday January 2.
3. The Vince Lester Bridge is not expected to be clear of water until Tuesday January 4. Inspections and possible repairs will need to occur before the bridge is open to all traffic.
4. Theresa Creek at the Gregory Highway is currently 9.2 m and falling. Water is expected to be clear of the bridge deck later today. Inspections will need to occur before the road is reopened to traffic.
5. Water has entered the Woolworths shopping centre, closing the supermarket. Is it expected that access for inspection of damage will not be available until later on Monday January 3.
6. The Local Disaster Management Group is in discussions to arrange food resupplys to all communities and evacuation centres.
7. The dam spillway is at 5.6 metres. The dam is at 175% of capacity.

8. The Gemfields SES flood boat has been relocated to Emerald to provide assistance.
9. Evacuation centres have been established at the Town Hall, St Pats in Emerald and at the Emerald Agricultural College.
10. Around 1300 people have registered with the evacuation centres. Many of these people are staying with family and friends, with only around 250 people staying at the centres.
11. There is potential in some areas for sewerage to come out up of wastes in inundated areas. Floodwater could be contaminated so do not swim or enter floodwaters.
12. Where there is inundation in areas served by underground power, it is expected the power will be turned off for safety reasons. Power may also go off in other areas.

Road information updates can be found on [www.131940.qld.gov.au](http://www.131940.qld.gov.au) and [www.chrc.qld.gov.au](http://www.chrc.qld.gov.au)

We are continuing to monitor river flows, weather forecasts and impacts of rainfall, and maintain daily contact with the Bureau of Meteorology and other key organizations. We remain committed to keeping our Central Highlands communities informed, and will continue to issue on a daily basis.

Councillor Peter Maguire  
Mayor, Central Highlands Regional Council  
Chair Central Highlands Local Disaster Management Group



**Central Highlands Regional Council  
PO Box 21  
EMERALD QLD 4720**

**Friday December 31 2010**

**The Local Disaster Management Group met this afternoon at 5.00 pm**

- The Governor General telephoned the Mayor today. She expressed her thanks to all agencies, volunteers and community and other organisations who are working in the community. Her best wishes were sent to all residents and people in the community.
- Initial estimates are that up to 1000 homes may have been inundated in the Emerald area, and up to 3000 may have had water near or around them.
- It appears that 100% of the industrial area has been affected, and 75% of the retail and commercial area, including the two shopping centres.
- This means there will be months of recovery ahead.
- The water level at the Vince Lester bridge has dropped by about 10 cm. Main Roads may be able to access the bridge for inspections late Tuesday.
- There has been significant washout on the approach to the rail bridge. The water level still needs to drop further before further inspections and repairs can take place.
- There is still significant water over the Gregory Highway to Capella to the north of Emerald.
- Access to Woolworths may be available late tomorrow. Assessments and clean ups will occur as soon as possible.
- Coles may be accessible for inspections and clean up early next week.
- Ergon Energy will have extra crews arriving to start work on Monday. They will assist local staff in reconnecting power supply across the area.
- The Queensland Police are continuing patrols, especially in the inundated areas to prevent looting.
- Police will not tolerate people driving around traffic controls.
- More than 60 pallets of cleaning products will be arriving in the next day or so. Their distribution will be coordinated through the Disaster Management Group.

- The water plant in Emerald continues to operate and provide full water service to the town.
- Waste water is an issue, however, so we need people to take shorter showers, using low pressure and to minimise the flushing of toilets, while still maintaining hygiene and health.
- Lifeline counsellors are situated at the Emerald Town Hall, Ag College and St Pats evacuation centres for people who may wish to access them.
- Red Cross continue to operate four evacuation centres in Emerald.
- Resupplying of food in communities across the Central Highlands continues.
- The Local Disaster Management Group will meet again at 9.00 am tomorrow, January 1, 2011

Councillor Peter Maguire  
Mayor, Central Highlands Regional Council  
Chair Central Highlands Local Disaster Management Group



Central Highlands Regional Council  
PO Box 21  
EMERALD QLD 4720.

## BRIEFING FOR EMERALD RESIDENTS

January 1 2011

Update from the LDMG January 1, 2011  
The Local Disaster Management Group met this morning at 9.00 am

### Flood waters

- Water in Emerald has now peaked and is starting to drop slowly.
- The peak water flow is moving east towards Blackwater, and is expected to reach the Bedford Weir later today.
- There is NO further large inflow expected into the dam at this time.

### Power

- Ergon Energy gave a briefing about the process they will use to inspect and restore power to houses. This information will be available at evacuation centres, from Council and on the website. They are having additional staff brought in from across the state to assist.

### Recovery

- The Recovery Group has been established and will operate initially from the Emerald Art Gallery. They are currently focusing on arranging waste collection, providing information about re entering houses and clean up and will be coordinating cleaning resources including volunteer work crews.

### Accommodation

- The Habitat will remain in Emerald at the airport until a clearer assessment of demand and appropriate location is made. (The habitat provides emergency accommodation for 150 people.)
- Red Cross reported that 428 people stayed at evacuation centres last night.

### Roads

- The Vince Lester Bridge remains closed. Main Roads personnel anticipate being able to begin assessments and repairs early next. It will be still some days until the bridge is reopen to traffic.
- Even though water at the LN1 on the highway north of Emerald is receding, significant damage has been caused to the culvert under the highway. **Under no circumstances is anyone to try to cross this channel.** Main Roads will assess and repair the road as soon as practicable. Traffic controls will be in place on both sides of the water course.

### Health

- Temporary Hospital Clinics remain open at the Ag College and in Anakie St at Belman House. These will remain open until all vehicle access to the hospital is available.

- Water sampling will commence next week. Council will be seeking additional resources to assist with public health management issues.
- Treated water supplies remain good in Emerald and Blackwater.
- Residents should avoid walking through flood waters.
- When cleaning houses that have been inundated, it is important for residents to separate food and domestic waste from "clean" waste (eg carpets, damaged furniture, white goods etc. Further information about waste collections will be provided as soon as arrangements are confirmed.

**Resources**

- Additional police resources will be arriving today and Monday. Police continue to provide 24 hour water patrols. Prevention of looting remains their highest priority.
- Monday will see the arrival of 44 SES volunteers from NSW and Victoria, to assist with the recovery process.
- The 80 pallets of cleaning products should be in Emerald tomorrow. They will be distributed through the Recovery Group and be available on both sides of the river.

The Local Disaster Management Group will meet again at 9.00 am tomorrow,  
January 2, 2011

Councillor Peter Maguire  
Mayor, Central Highlands Regional Council  
Chair Central Highlands Local Disaster Management Group



Central Highlands Regional Council  
PO Box 21  
EMERALD QLD 4720

## Briefing Note

**Date: Saturday January 1, 2011**

**Time: 3.45 pm**

The Central Highlands Regional Council Mayor, Councillor Peter Maguire, issued the following statement today.

The following provides some details about support being provided to flood affected communities in the Central Highlands Region.

- **All food supplies to the region are being provided by air transport as there are no rail or road freight systems operating. Food and grocery supplies are currently limited to essential and non perishable items, and bread right across the region, including Emerald.**
- The resupplying of essential and non perishable food, and bread, is continuing across the Central Highlands. An urgent drop was made by air to Blackwater yesterday, and further supplies are expected to be in the community by tomorrow.
- Bluff and Duaringa have received supplies today.
- Food drops have been arranged for isolated properties in the eastern parts of the region.
- Staffs from Council's Duaringa office are in regular contact with people on properties in the Bauhinia area.
- Telephone services have been restored to Duaringa residents, however there is still no mobile or land line service in the Woorabinda area. Council staff are maintaining email contact with people on affected properties.
- Contact has been made with the Comet community to begin the process of providing essential supplies.
- Assistance in the Springsure and Rolleston areas is being coordinated by Cr Gail Nixon. Supplies to some isolated properties continues, with more drops completed today.
- The Springsure SPAR was provided with supplies yesterday, and opened today for residents. Rolleston has also received essential supplies.

- The Rolleston SES boat is working again to provide access across Panorama Creek.
- Contact is continuing with isolated properties. Phones are not working in some areas, so Council staff are maintaining email contact with people on affected properties.

Again, right across the region, the resilience, generosity and can do attitude of Central Highlands residents is being demonstrated under the most trying circumstances. Offers of assistance continue to come in from all parts of the region. Many of our volunteers, community groups and staff are working for their communities when their own homes and businesses have been affected. Without this commitment to our region our capacity to deal with this disaster would have been severely affected. My heartfelt thanks and admiration extends to them all.

Councillor Peter Maguire  
Mayor, Central Highlands Regional Council  
Chair Central Highlands Local Disaster Management Group





**Central Highlands Regional Council**  
**PO Box 21**  
**EMERALD QLD 4720**

**January 2 2011**

**Update from the LDMG January 2, 2011**  
**The Local Disaster Management Group met this morning at 9.00 am**

**RECOVERY**

- LDMG is now moving into the Recovery Phase.
- Dept of Communities staff are arriving later today. They will be located at the PCYC and the Ag College.
- Additional SES volunteers from NSW and Victoria, have now arrived to assist with the clean up and recovery process

**ROADS**

- Access north of town to Capella is available. Light vehicles only via the Capricorn Highway, past BP onto Tyson Road and Wills Road to Gregory Highway. Vehicles up to 10 tonne can use Brief St, Baker, St, Capricorn Highway, then onto Tyson Road and Wills Road to Gregory Highway. Please exercise caution at all times.
- Water will be off the Vince Lester Bridge by tomorrow morning. Main Roads will inspect the bridge and approaches at first light. Only single lane, one way traffic only will be available once a decision is made as to when the bridge is open— therefore long delays are likely, and patience and understanding will be required.
- Access to the south side is possible using Selma Road to Long St.
- Still no access north across the Gregory Highway at LN1 drain. There has been major damage and significant road base lost. It is likely when the road eventually reopens it will be single lane only.

**CLEANING UP**

- Recovery centre at the Art Gallery is out of cleaning products, Harvest Life Church very low.
- People on the airport side should go to the airport and staff there will advise them as to where to collect cleaning products.
- Disinfectant has not arrived yet.
- More cleaning products are being flown in today.
- Mines crews are working to help people clean out their homes.
- When re entering your house, be aware that animals such as snakes, spiders etc. may have entered in order to escape the floodwaters.
- Please be careful and remember risks and hazards when hosing out your house – eg avoid water entering in power points, protect your skin from exposure to flood waters etc.

**HEALTH**

- Hospital is now back fully operational. Anakie St clinic no longer operating.

- The clinic at the Ag College will remain operational until access across to the hospital is available.

#### **POLICE**

- Police are maintaining patrols of inundated areas, including the industrial estates, to deter looting.

#### **SHOPS**

- Woolies will be open this afternoon between 3 and 5 pm. LIMITED STAFF AND SUPPLIES, so please be patient. Enter the shopping centre from Rock Building Society/ Kaesbie Gardens end.

#### **POWER**

- Ergon Energy are continuing to work in the area to restore power supply.

#### **ACCOMMODATION**

- The Habitat is currently being transported by Black Hawk helicopter to St Patrick's school where it will be set up today. This can provide emergency accommodation for up to 150 people.
- Numbers at the evacuation centres remain steady.

The Local Disaster Management Group will meet again at 9.00 am tomorrow, January 3, 2011.

Councillor Peter Maguire  
Mayor, Central Highlands Regional Council  
Chair Central Highlands Local Disaster Management Group



Central Highlands Regional Council  
PO Box 21  
EMERALD QLD 4720

## Briefing Note

Date: Sunday, January 2, 2011  
Time: 6.00 pm

### **NUMBER OF HOUSES IN EMERALD LESS THAN INITIAL ESTIMATES, INDUSTRIAL SECTOR DECIMATED**

The Mayor of the Central Highlands Regional Council said today that after receiving feedback from crews working on the ground in the flood inundated streets of Emerald, the number of houses that have had water enter the property is now estimated at 1200.

Of these, 400 have had water enter the house over the floor area.

The Queensland Fire and Rescue Rapid Assessment team service have been collecting this information as they conduct their primary search and rapid damage assessment.

"While these figures are less than we initially thought, it is still a significant part of the community that has been affected. Even those homes where water hasn't gotten into the house may have water in sheds, pools, or have cars damaged.

"And of course, we still have the commercial areas, including our two big shopping centres flooded.

"Our industrial areas have been absolutely decimated. It will be a long climb back for many, many, people.

"It is too soon to try and put a dollar figure on losses yet, but it will very substantial."

### **Mines Providing on the Ground Support**

The mines crews have been out today and I understand that Rio Tinto Kestrel had about 100 of their workers out and have helped clean up around 70 homes today.

The assistance that the local mines have delivered has been phenomenal. This kind of practical help goes a long way in helping people recover faster.

### **Rubbish Being Collected**

"We will be collecting the flood damaged goods that people are leaving outside their homes over the next few days, and people should be seeing the JJ Richards trucks out doing the household rubbish collection soon too."

The Emerald community will continue to see the QFRS Rapid Response team in the streets as they continue to work in the town over the coming days. This information will then be fed to the Local Disaster Management Group and may help with response from relevant agencies in the determination and delivery of their support to flood affected residents.

Councillor Peter Maguire  
Mayor, Central Highlands Regional Council  
Chair Central Highlands Local Disaster Management Group



Central Highlands Regional Council  
PO Box 21  
EMERALD QLD 4720

January 3 2011

**Update from the LDMG January 3, 2011**  
**The Local Disaster Management Group met this morning at 9.00 am**

**EMERGING ISSUES**

- As we knew would occur, there are very real issues continuing to emerge in the rural sector. Council will exercise its power Sect 184 of the Local Government Act to allow graziers who are able, to restore access. This will need them to undertake risk assessments etc, but will enable them to have access much earlier than Council could provide it.
- The Mayor estimates that 50 000 sq km of the region's 60 000 sq km area has been impacted by flooding.

**ROADS**

- Access north of town to Capella is available. Light vehicles only via the Capricorn Highway, past BP onto Tyson Road and Wills Road to Gregory Highway. Vehicles up to 10 tonne can use Brief St, Baker, St, Capricorn Highway, then onto Tyson Road and Wills Road to Gregory Highway. Please exercise caution at all times.
- Main Roads are doing repairs at the Gregory Highway at LN1 drain. It is likely that the road will be open later today under traffic control single lane only. More permanent repairs will start tomorrow. The road will be open to all as of right vehicles.
- The Vince Lester Bridge is now open. Only single lane, one way traffic is currently available. Therefore long delays are likely, and patience and understanding will be required. It is hoped that both lanes will be open later this afternoon.
- All local roads in Emerald are now open except part of Hogans Road.
- Access to the south side is possible using Selma Road to Long St.
- Access to Emerald from Brisbane via the road network is now available. The route, about 1300 kilometres, takes drivers from Brisbane through Toowoomba, Roma, Blackall, Barcaldine and Emerald.
- The Comet River is now clear of the Capricorn Highway, but there is still water over the road at Sandhurst Creek. It is not expected to be trafficable until at least tomorrow morning.

**POWER**

- Ergon Energy are continuing to work in the area to restore power supply. Today they will be working to restore power in areas including the units in Riverview St, Gray St, the Centro shopping Centre at Coles, Centacare, and The Links.
- Power was restored to 207 homes yesterday.

#### **ACCOMMODATION**

- Numbers at the evacuation centres are now falling, and expected to fall further today with the opening of the Vince Lester Bridge.
- |              |     |
|--------------|-----|
| Town Hall    | 47  |
| Ag College   | 109 |
| Harvest Life | 92  |
| St Pat's     | 35  |

#### **HEALTH**

- Hospital is now back fully operational. Anakie St clinic no longer operating.
- The clinic at the Ag College will remain operational until access across to the hospital is available
- A Mental Health Nurse and two Registered Nurses will be located at the Recovery Centre at the PCYC every day.

#### **Queensland Fire and Rescue Service**

- The Rapid Assessment team will be working today in streets on the southside of the railway station, (ie Long St, Slack Drive, Riverview St, Gray St etc) and into the Industrial area including Batts St, Cottonview Rd and Daniels St.

#### **CLEANING UP**

- Garwoods have begun street side collections today of flood damaged goods. Residents should NOT put this hard rubbish in their household wheelie bins as the trucks cannot lift them.
- The Emerald Transfer station will not be operational for at least another couple of days due to water damage to the compactor.

#### **RECOVERY**

- Additional SES volunteers from NSW and Victoria, have now arrived and are assisting with the clean up of the shopping centre, Centacare, and showgrounds.
- Supplies of disinfectant and antiseptic are very low.
- The Council Recovery Centre located in the Art Gallery will relocate to McIndoe Park as soon as practical.
- Suncorp Insurance assessors are now in town.
- Residents who have insurance with other insurance groups who have not yet arrived and may not arrive for several weeks should take photos of damage, and keep a square of damaged flooring (eg carpet, lino) to show assessors before throwing it out. More information is available at the Council Recovery centre and on our website. [www.centralhighlands.qld.gov.au](http://www.centralhighlands.qld.gov.au)

The Disaster Coordination Centre will now open between 6.00 am and 8.00 pm

**The Local Disaster Management Group will meet again at 9.00 am tomorrow,  
January 4, 2011.**

**Councillor Peter Maguire  
Mayor, Central Highlands Regional Council  
Chair Central Highlands Local Disaster Management Group**



Central Highlands Regional Council  
PO Box 21  
EMERALD QLD 4720

January 4 2011

**Update from the LDMG January 4, 2011**  
**The Local Disaster Management Group met this morning at 9.00 am**

**POWER**

- Ergon Energy are continuing to work in the area to restore power supply.
- Coles now has full power supply.
- McIndoe Park should have power back on today. This will assist in the relocation of the Community Recovery Centre from the PCYC to McIndoe Park later in the week.

**ROADS**

- There is severe damage to the eastern approach of the Comet River bridge. Repairs to this area are Roadtek's highest priority. However, the road will remain closed until at least tomorrow morning.

**HEALTH**

- Hospital is now back fully operational.
- They are beginning to see a number of people presenting with injuries related to cleaning up eg severe lacerations. LDMG urges people to be careful, and if they do receive cuts etc, ensure they are treated appropriately.

**POLICE**

- Police reported that law and order issues around Emerald have been very quiet, and commended the community on their resilience and efforts.

**TRAFFIC**

- Council asks people in those areas to park their vehicles off the road to ease congestion and allow the trucks collecting flood damaged goods to pass through. Residents can also help by not sight seeing through flood affected streets.

**ACCOMMODATION**

- Numbers at the evacuation centres are now falling, and expected to fall further today with the opening of the Vince Lester Bridge.

Town Hall	37
Ag College	82
Harvest Life	79
St Pat's	26
- LDMG has requested Red Cross close two centres today.



## **WATER**

- Water quality remains good in Emerald.
- There is a leak in the main pipe providing supply to Bluff. This is being worked on today. Bluff water are currently unaffected.

## **BUILDING INSPECTIONS**

- Council's plumber, building inspector and other staff are undertaking door to door inspections of flood affected houses and also providing additional useful information.

## **SANDBAGS**

- Residents can use sand from bags to repair their lawns, and then discard the used bags. Please do not place full sandbags into normal household rubbish bins.

## **Queensland Fire and Rescue Service**

- The Rapid Assessment team will continue their work in Emerald today.

## **RECOVERY**

- Volunteers are today working in the TAFE, Denison State School, Centro (Coles) shopping centre, and the Visitor Information Centre.
- The Council Recovery Centre located in the Art Gallery is now closed. All cleaning products can be accessed at the 2011 Recovery Centre on the corner of the Gregory Highway and Campbellford Drive. (old budget shed)
- Donated goods can also be dropped here.
- The Salvation Army has rags available for cleaning use.

The Local Disaster Management Group will meet again at 9.00 am tomorrow, January 5, 2011.

Councillor Peter Maguire  
Mayor, Central Highlands Regional Council  
Chair Central Highlands Local Disaster Management Group



Central Highlands Regional Council  
PO Box 21  
EMERALD QLD 4720

January 5 2011

**Update from the LDMG January 5, 2011**  
**The Local Disaster Management Group met this morning at 9.00 am**

**POWER**

- Ergon Energy will be working in Suncross Place and Little Farm Road to restore power.
- Please continue to return Form A's as they are completed.
- Energex staff are starting to return to Brisbane today.
- Staff will be working over the weekend.

**BUILDING INSPECTIONS**

- Council's plumber, building inspector and other staff are undertaking door to door inspections of flood affected houses and also providing additional useful information.

**RUBBISH**

- Collection of flood damaged household goods still continuing.
- Normal household rubbish collection is still occurring. Please DO NOT put rubbish from flood damage including sandbags in your normal rubbish bins.
- There will be no recycled rubbish collections this week. Priority for Councils and contractors is getting rid of hard rubbish.
- JJ Richards will be doing a mass collection of rubbish today. Place your general waste in any bin (red or yellow) and they will be collected.

**ROADS**

- Council are working today on providing access by grading Denison Rd, and working in Donahue St and Amethyst Dr.
- There is severe damage to the eastern approach of the Comet River bridge. Repairs to this area are Roadtek's highest priority. However, the road is likely to remain closed until tomorrow morning.

**REGIONAL RESUPPLY**

- Food resupply is occurring today for Duaringa, Dingo, Bluff and Bauhinia.
- Isolated properties north west of Duaringa will be supplied tomorrow.
- Fuel supplies are very low in Blackwater. Residents are advised to conserve their own fuel use to essential use only until supplies can be replenished.

**Queensland Fire and Rescue Service**

- The Rapid Assessment team will continue their work in Emerald today.

**ACCOMMODATION**

Town Hall	25
Ag College	46
Harvest Life	62
St Pat's	33

- The St Pat's and Harvest Life centres will close today, and people will be relocated to the Town Hall or Ag College.

#### HEALTH

- Hospital is now back fully operational.
- There will be 2 doctors at the Gemfields today.

#### POLICE

- Police reported that law and order issues around Emerald have been very quiet, and commended the community on their resilience and efforts.

#### WATER

- Water quality remains good in Emerald.
- The very high demand is causing the drops in water pressure being experienced. This will ease as demand decreases.
- There is a leak in the main pipe providing supply to Bluff. This is being worked on today. Bluff water quality is not affected.
- Electricians are working on sewerage issues in Rolleston today.

#### RECOVERY

- Dept of Communities will close the PCYC today at 3.00 pm and relocate to McIndoe Park tomorrow. Other agencies colocated include Centrelink, DEEDI, Insurance Council of Australia, and Lifeline.
- All cleaning products can be accessed at the CHRC Flood Recovery Centre on the corner of the Gregory Highway and Campbellford Drive. ('the big blue building'). More disinfectant is available, and further supplies of lime have also come in.
- Donated goods of electrical equipment, furniture and household goods can be dropped to the Car Club shed located at the showgrounds. NO CLOTHING is needed.

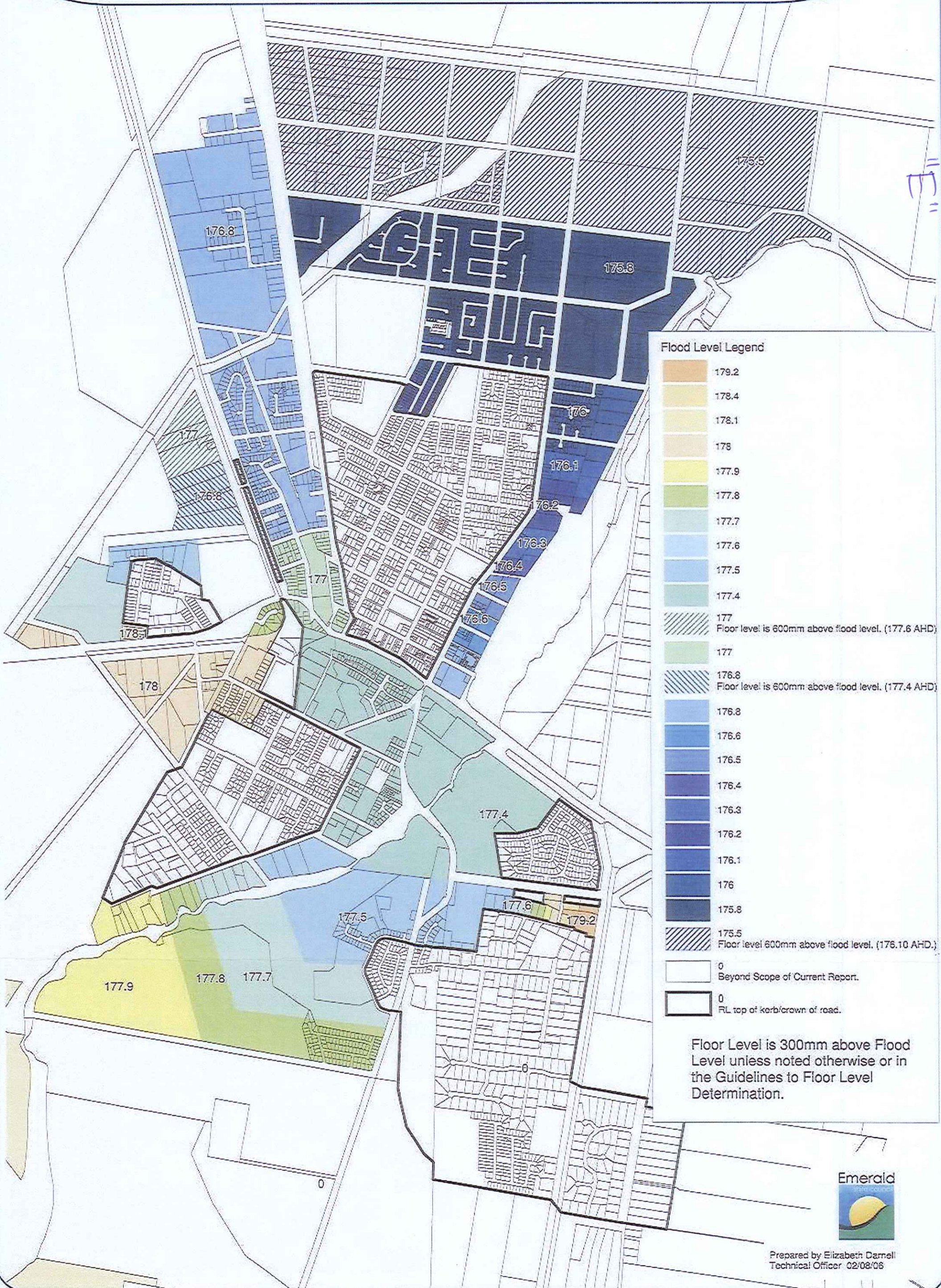
The State Member for Gregory, Vaughan Johnson attended the meeting. He thanked acknowledged the work put in by the Mayor and Council, and all emergency agencies involved with the LDMG. He also thanked the ABC for keeping the community, the state and nation informed of the disasters occurring in Queensland.

The Mayor asked that all agencies pass on his personal thanks to every one involved for their efforts.

The LDMG will now stand down as the CHRC Recovery Group is activated.

Councillor Peter Maguire  
 Mayor, Central Highlands Regional Council  
 Chair Central Highlands Local Disaster Management Group

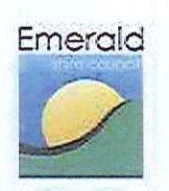
# Emerald Interim Flood Levels Map To Determine Floor Level



**Flood Level Legend**

[Orange]	179.2
[Yellow-Orange]	178.4
[Yellow]	178.1
[Light Yellow]	178
[Light Green]	177.9
[Green]	177.8
[Light Blue]	177.7
[Blue]	177.6
[Dark Blue]	177.5
[Teal]	177.4
[Hatched]	177 Floor level is 600mm above flood level. (177.6 AHD)
[Green]	177
[Hatched]	176.8 Floor level is 600mm above flood level. (177.4 AHD)
[Light Blue]	176.8
[Blue]	176.6
[Dark Blue]	176.5
[Dark Blue]	176.4
[Dark Blue]	176.3
[Dark Blue]	176.2
[Dark Blue]	176.1
[Dark Blue]	176
[Dark Blue]	175.8
[Hatched]	175.5 Floor level 600mm above flood level. (176.10 AHD.)
[White]	0 Beyond Scope of Current Report.
[Black Outline]	0 RL top of kerb/crown of road.

Floor Level is 300mm above Flood Level unless noted otherwise or in the Guidelines to Floor Level Determination.



"F"

# Regional Roundup

Summer 2010



## WHAT'S INSIDE

- Mayors Message .....2
- E Newsletter .....2
- Inspiring Women .....3
- Weekly Cattle Sales for 2011.....3
- News from the Library.....4
- Community Information in Capella ..5
- Preparing for the Storm Season.....6/7
- Nominate for Australia Day Awards..9
- New Central Highlands Australians 10
- Partnering Now Forum a Success... 11
- Council Managers Visiting Roster... 12
- Date Claimers ..... 13
- Council Contacts..... 14
- Council Meeting Dates..... 15



## Special Consultation Sessions Planned

Council has planned a series of special consultation sessions to be held in the first week of February next year to discuss its rates, valuations and budgeting processes.

These meetings will be open to all ratepayers and residents.

The Mayor has advised senior managers and Councillors to plan to be on the road for a week and have some serious discussions about future community needs, to ensure that all residents and ratepayers are aware of what is happening in the current environment.

Council will have specialists in the areas of the land valuation process and local government to explain, from an independent perspective, how Council must operate under the Local Government Act 2009.

"It's clear that we need to communicate all of the factors that are relevant in budgeting, rating and levels of service

delivery," said the Mayor, Councillor Peter Maguire.

Speakers include legal specialist Tim Fynes Clinton, Pat Lyons and Alan Morton.

The meetings are proposed as follows:

- **Tues 1st Feb** Springsure Hall at 9am
- **Wed 2nd Feb** Bauhinia Downs Hall at 10am
- **Thurs 3rd Feb** Dingo Hall at 9am
- **Thurs 3rd Feb** Blackwater Civic Centre (main hall) 2pm
- **Fri 4th Feb** Capella Cultural Centre 9am
- **Fri 4th Feb** Emerald Town Hall (auditorium) 1pm

Further information will be placed on Council's website early in the New Year, and promoted through local news outlets.

3596707.00

# Disaster Planning - Be Prepared

All communities are prone to disasters, both natural events such as flooding or fires and others, such as chemical hazards. Every household can take some simple practical steps to be prepared to respond to a disaster.

All predictions indicate that we may have a wet summer ahead, so now is the time to think, prepare and act so you are not caught unawares.

- Check that you have appropriate insurance
- Ask friends and family living in higher, less flood prone areas if you can stay with them should the need arise for evacuation.
- Have an emergency kit on hand.
- Know which local radio stations will carry warnings and information.

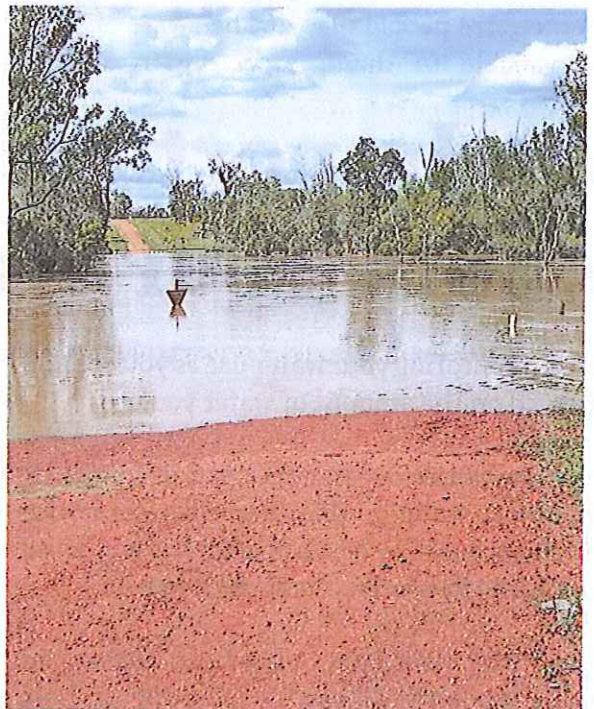
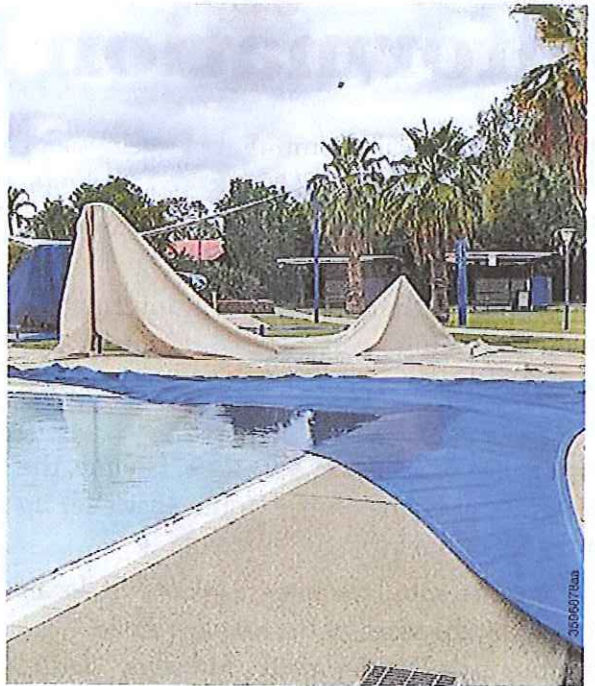
## Tips that will assist emergency services in locating you:

If you live in a rural area and there is a chance your property could become isolated, paint your name, or the name of the property, on the roof. It is also a good idea to have your GPS location written clearly and located near your phone.

## Flooding

The Central Highlands is subject to occasional extreme rainfall between November and March. If flooding is predicted

- Listen to your radio
- Take all warnings and advice seriously
- Remove as many household items as possible to as high a point as possible, including cardboard boxes and newspaper items.
- Pile furniture on beds and personal items on the furniture and remove all drawers from built ins.
- Tie down loose items in your yard to prevent them from floating away.
- Ensure all chemicals that may react with water are within a waterproof container and are moved to a higher level.
- Gas cylinders and bottles should be disconnected and tied down or removed above flood height.
- Close the mains water valve.
- Make sure your car is fully fuelled.
- If driving be sure of the depth of water before driving through it.



## Emergency Kit Checklist

- Torch (spare batteries)
- Battery operated radio (spare batteries)
- Candles, lighter and waterproof matches
- First Aid Kit
- Combination pocket knife
- Portable stove with fuel
- Cooking utensils
- Water in sturdy sealed containers (10 litres per person)
- Medications
- Toiletry and sanitary supplies
- Change of clothes and strong shoes
- Tinned food - enough for 3 - 4 days
- Can opener
- Special needs for infants, older people and people with disabilities
- Pet food, water and other animal needs
- Tent or tarpaulin and blankets
- Money
- Strong plastic bags
- Personal documents - insurance, certificates, photos, identification (drivers licence, medicare card etc)
- Board games, cards, etc
- Emergency contact list and mobile phone chargers
- Insect repellent and sunscreen

### Useful Website Addresses

#### Bureau of Meteorology (BOM)

[www.bom.gov.au](http://www.bom.gov.au)

#### Emergency Management Queensland

[www.emergency.qld.gov.au/emq](http://www.emergency.qld.gov.au/emq)

#### Road Conditions

[www.131940.qld.gov.au](http://www.131940.qld.gov.au)

### SES phone 132 500

Council supports a number of SES groups across the region. In all instances, requests for assistance from the SES should be through their general phone number, 132 500.



**Emerald & Gemfields Region**

# **PREPARING & RESPONDING TO DISASTERS**



## **A Residents Guide**





# MAYOR'S FOREWORD

*This guide has been put together to provide residents with some essential information in relation to emergency situations and guidelines for dealing with events such as those that affected Emerald and the Gemfields in January 2008.*

*The guide will deal with flooding, evacuations, strong winds and storms, industrial accidents and fires. Preservation of human life is all-important in these circumstances if they occur. There are important steps we all need to take before an event happens, during the event, and afterwards. We hope this guide will provide some positive knowledge for all families to take the proactive measures required to ensure everyone is kept safe and out of danger.*

**Councillor Peter Maguire**

**Mayor**

**Central Highlands Regional Council**

# AUTHORITY

Local Government in the Central Highlands Region has always played a critical role in emergency management. Flooding is an inevitable part of living in this area and we cannot afford to become complacent about the dangers it presents.

To assist you in preparing to counter such events and protect yourself and your family, this Residents Guide has been produced, covering parts of the Emerald and Gemfields areas. Please take the time to read it, and then store it where it is readily available.

The Emerald Local Disaster Management Group would like to know of people who have special needs and may require some extra support, such as: oxygen reliant, dialysis, use a wheelchair, no transport etc.

If you or someone you know requires extra assistance in the event of a disaster, please REGISTER NOW by calling Council's Customer Service Centre on **1300 242 686**.

## CONTENTS

Local Disaster Management Group... 1	If flooding is predicted ..... 10
Planning ahead ..... 2	If flooding occurs ..... 11
Keeping pets safe ..... 2	After the flood ..... 11
First aid kit..... 2	Evacuation..... 12
Emergency kit checklist..... 3	Preparation..... 12
Useful contact phone numbers..... 4	Selma Road residents ..... 13
Useful website addresses ..... 5	When told to evacuate..... 13
For the kids ..... 5	Strong winds and storms ..... 14
Gemfields area map..... 6 - 7	Industrial/chemical accidents..... 14
Emerald town map ..... 8 - 9	Urban and rural fires..... 14
Flooding ..... 10	Sandbagging..... 15

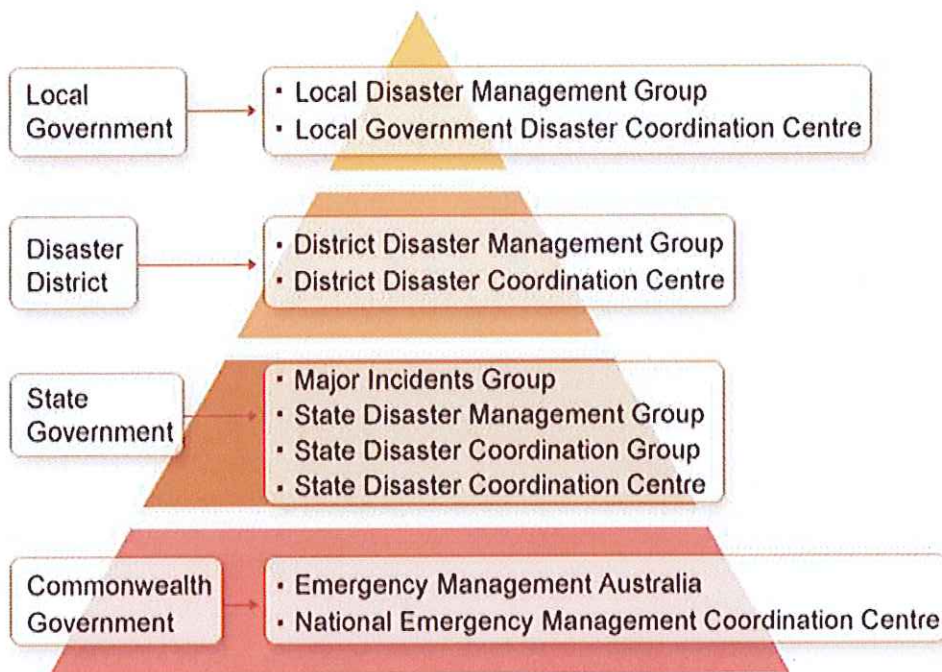
## LOCAL DISASTER MANAGEMENT GROUP

The Disaster Management Act establishes Disaster Management Groups at three levels:

- State
- District
- Local (for individual or combined Local Governments)

These three tiers are designed to give rapid technical and tangible assistance to disaster stricken communities.

Management of a disaster at the community level is handled by your local Council's "Local Disaster Management Group", traditionally made up of Council representatives and local groups such as the SES, Fire Service, Police Service etc.



The Local Disaster Management Group is best placed to decide what resources are needed, when they are needed and how best to utilize them in the local community to minimize hardship and suffering.

Your Local Disaster Management Group plays a key role in the Queensland Disaster Management System.

For more information, go to the State Disaster Management Group website at: <http://www.disaster.qld.gov.au/about/>

## IMPORTANT

**Listen to your radio; heed all warnings and advice.**

**Please help friends and neighbours by passing on the warnings and their meaning.**

**Reassure them and assist them to prepare for disasters by having a plan.**



Keep the SES Emergency number handy. Store it in your mobile phone!

## PLANNING AHEAD

All communities are prone to disasters, both natural events such as flooding or fires and others, such as chemical hazards. Every household can take some simple practical steps to be prepared to respond to a disaster.

- Check that you have appropriate insurance.
- Ask friends or family living in higher, less flood prone areas if you can stay with them should the need arise for evacuation.
- Have an emergency kit on hand.
- Know which local radio stations will carry warnings and information.

## KEEPING PETS SAFE

### **Evacuation and reception centres will not take pets.**

Part of your plan should include thinking about the safety of your pets during a disaster. Think about moving them to friends or relatives located in higher areas.

Make sure you have:

- adequate pet food (non perishable) for several days, and feed and water bowls.
- Toilet litter or old newspapers.
- Essential medications and vet details.
- Make sure you have their current vaccinations, registration or other identification.
- Prepare a room to house your pet, such as the bathroom or laundry.

### FIRST AID KIT

#### Your first aid kit should have

- |   |  |
|---|--|
| <input type="checkbox"/> Plastic strips           | <input type="checkbox"/> Square gauze pads   |
| <input type="checkbox"/> Non allergic tape        | <input type="checkbox"/> Antiseptic cream    |
| <input type="checkbox"/> Sterile eye pads         | <input type="checkbox"/> Alcohol swabs       |
| <input type="checkbox"/> Triangular bandages      | <input type="checkbox"/> Disposable gloves   |
| <input type="checkbox"/> Gauze bandages           | <input type="checkbox"/> Burn and bite cream |
| <input type="checkbox"/> Sterile combine dressing |  |
| <input type="checkbox"/> 15 safety pins           |  |
| <input type="checkbox"/> Stainless steel scissors |  |

# EMERGENCY KIT CHECKLIST

- Battery operated radio (spare batteries)
- Torch (spare batteries)
- Candles, lighter and waterproof matches
- First Aid Kit
- Combination pocket knife
- Portable stove with fuel
- Cooking utensils
- Water in sturdy sealed containers (10L per person)
- Medications
- Toiletry and sanitary supplies
- Change of clothes and strong shoes
- Tinned food - enough for 3-4 days (can opener)
- Special needs for infants, older people and people with disabilities
- Pet food, water and other animal needs
- Tent or tarpaulin and blankets
- Money
- Strong plastic bags
- Personal documents – insurance, certificates, photos, identification (drivers license, Medicare card etc)
- Strong plastic bags
- Board games, cards, puzzles
- Emergency contact list and mobile phone and charger
- Insect repellent and sunscreen



## IMPORTANT

**Never leave a cat and dog in the same room during a strong weather event, even if they normally get along.**

**STORE YOUR EMERGENCY KIT SAFELY AND KNOW WHERE IT IS.**

**It's a good idea to store this booklet with your Emergency Kit and review it in preparation for an emergency.**



Keep the SES Emergency number handy. Store it in your mobile phone!

***Note: listen to radio for advice on most appropriate form of telecommunications***

## USEFUL PHONE NUMBERS

Only in life threatening emergencies should the  
000 number be used

Emergency – police, fire ambulance .....	000
Emergency – Electricity (Ergon Energy) .....	13 16 70
Faults — Ergon Energy .....	13 22 96
State Emergency Services .....	13 25 00
Police Stations	
Anakie .....	4985 4200
Blackwater .....	4982 5933
Capella .....	4984 9222
Emerald .....	4983 8100
Springsure .....	4984 1322
Central Highlands Regional Council .....	1300 242 686
Queensland Ambulance .....	13 22 33
Telstra faults .....	13 22 00
Fire Brigade .....	4982 0407
Sunwater .....	4987 9850

## USEFUL WEBSITE ADDRESSES



Bureau of Meteorology (BOM)  
<http://www.bom.gov.au/>



Central Highlands Regional Council (CHRC)  
<http://www.centralhighlands.qld.gov.au>



Emergency Management Queensland (EMQ)  
<http://www.emergency.qld.gov.au/emq/>



Red Cross  
<http://www.redcross.org.au>

## IMPORTANT

**When disaster threatens, listen to your local radio station and follow all official warnings and advice.**

### Frequencies:

**RADIO 4EEE**  
96.3 FM

**HOTFM**  
94.7 FM

**4HI**  
1143 AM

**ABC Local Radio**  
1548 AM

**ABC Radio National**  
93.9 FM

**SBS**  
93.1 FM Emerald  
103.5 FM  
Anakie/Sapphire/  
Rubyvale  
99.7 FM Willows

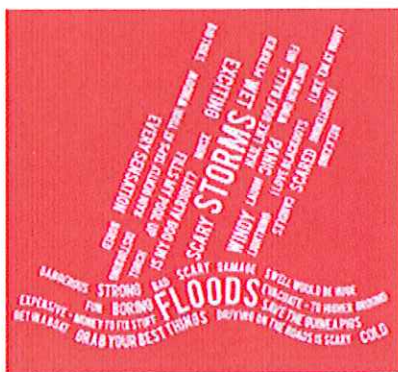


Keep the SES  
Emergency number  
handy. Store it in your  
mobile phone!

## FOR THE KIDS

### Red Alert!

<http://www.emergency.qld.gov.au/redalert.asp?details=flood>



"Red Alert" is a collection of digital stories made by young people from across Queensland about cyclones, bushfires, severe storms and floods.

These digital stories are a collage of young people's voices, art work and storytelling about their experiences.

### Get ready Kidnas!

<http://www.emergency.qld.gov.au/kids/kidnas/>



'Kidnas!' is a website designed by Emergency Services to make learning about emergencies easy to understand, interactive and fun. Click on the links to:

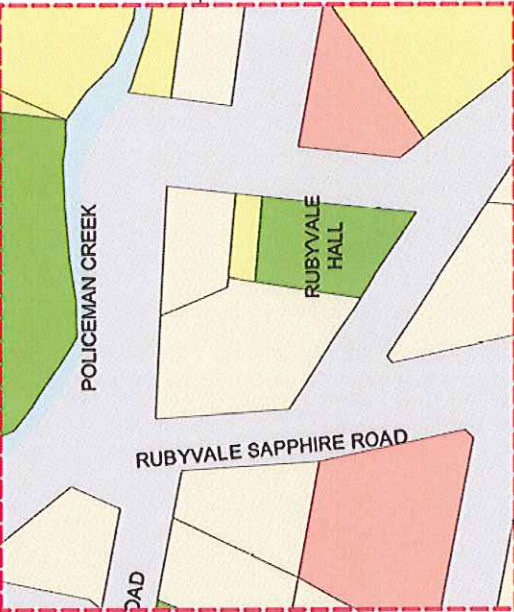
- Find out "What can happen"
- Make an Emergency Plan with the family
- Be prepared for emergencies and,
- Do the quiz and become a "Get Ready Kidna!"



RUBYVALE



To CAPELLA

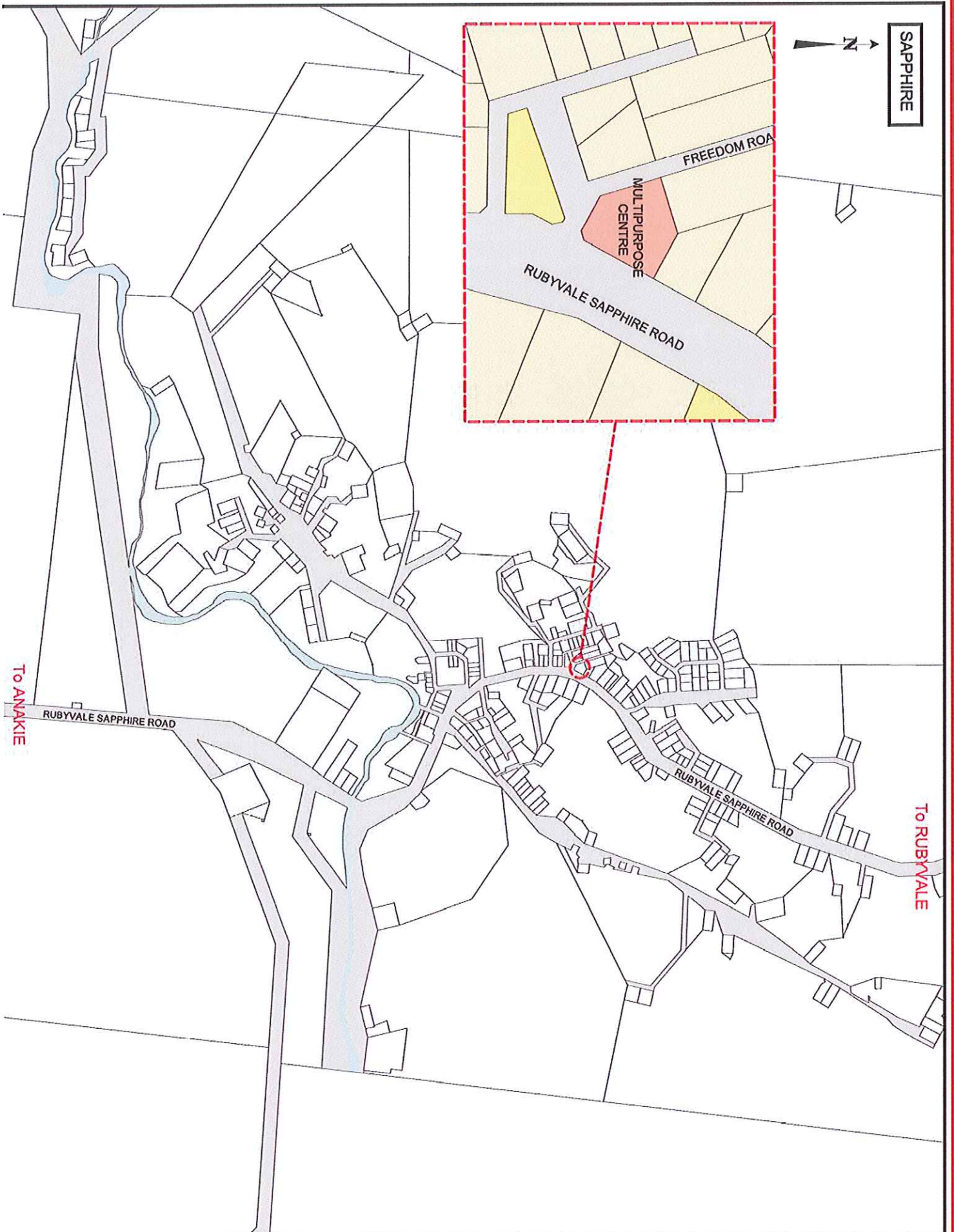


RUBYVALE SAPPHIRE ROAD

DAD

RUBYVALE SAPPHIRE ROAD

To SAPPHIRE/NAKIE



SAPPHIRE



FREEDOM ROAD

MULTIPURPOSE CENTRE

RUBYVALE SAPPHIRE ROAD

TO ANAKIE

RUBYVALE SAPPHIRE ROAD

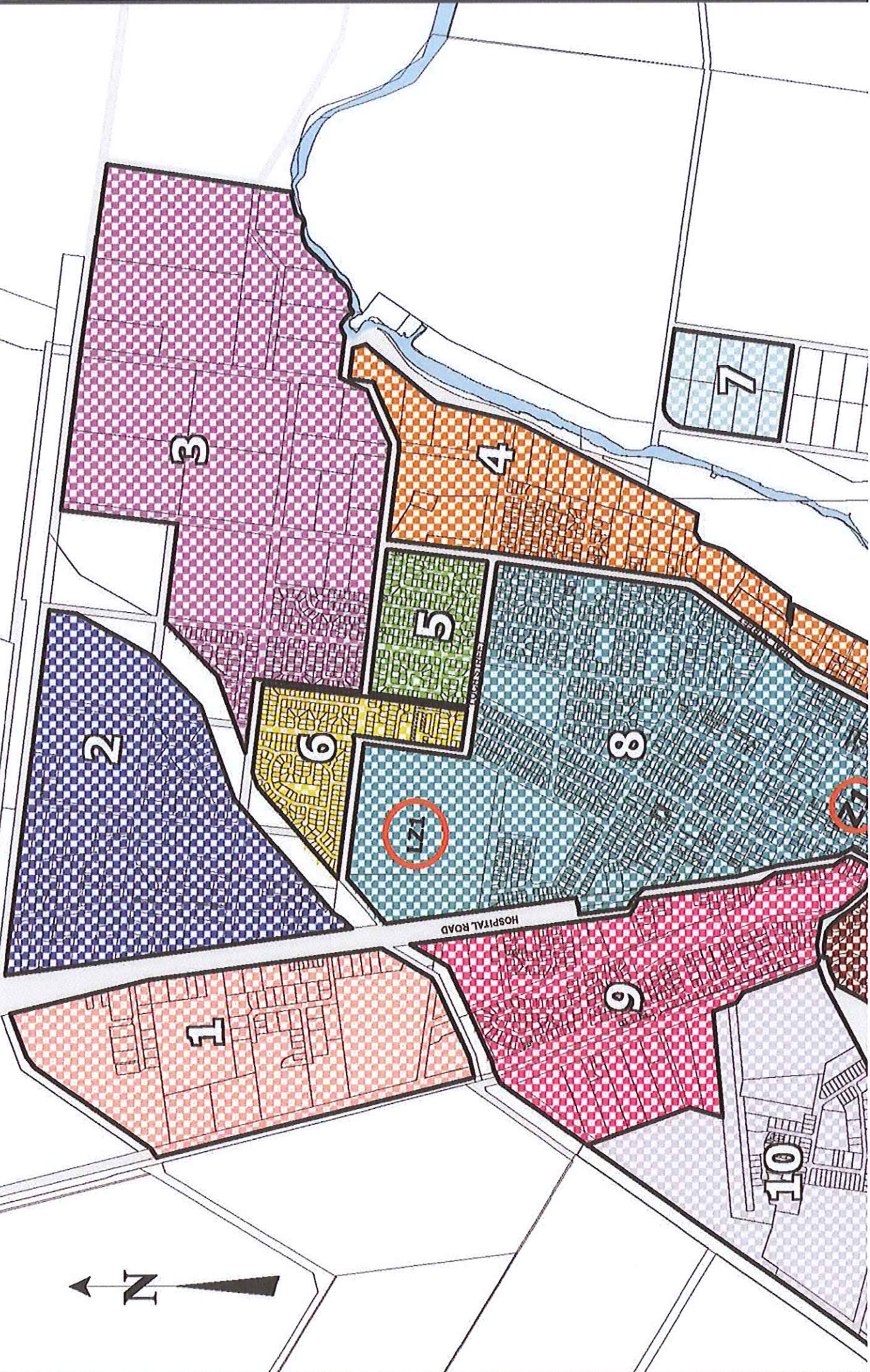
RUBYVALE SAPPHIRE ROAD

TO RUBYVALE



**Emerald Township Evacuation Zones**

TO CAPELLA



# FLOODING

The Central Highlands is subject to occasional extreme rainfall between November and March. While the Fairbairn Dam provides significant flood mitigation relief, due to the intense nature of the rainfall and the nature of the Central Highlands River system, some parts of Emerald and the Gemfields may be vulnerable to flooding.

## IF FLOODING IS PREDICTED

- Listen to your radio.
- Take all warnings and advice seriously.
- Remove as many household items as possible to as high a point as possible, including cardboard boxes and newspaper items.
- Pile furniture on beds and personal items on the furniture & remove all drawers from built ins.
- Tie down loose items in your yard to prevent them from floating away .
- Ensure all chemicals that may react with water are within a waterproof container and are moved to a higher level.
- Gas cylinders and gas bottles should be disconnected and tied down or removed above flood height.
- Close the mains water valve.
- Refer to the Evacuation Section of this booklet and know which evacuation zone you are in.
- Make sure your car is fully fuelled.
- If driving be sure of the depth of the water before driving through it.
- Place a can of water displacement spray in vehicle for engine.



**Don't wade through floodwaters  
- it's dangerous!**

## IF FLOODING OCCURS

- Collect your Emergency Kit (Page 3) and listen to the radio for official advice.
- Switch OFF electricity and gas if you leave home.
- Don't drink flood water.
- Avoid entering flood waters on foot or in a vehicle.
- Advise an appropriate authority (Council or Red Cross) of your relocation area if not to an official evacuation centre.

## AFTER THE FLOOD

- If you have been advised to evacuate, don't return home until advised it is safe to do so. Use the route recommended to return.
- Do not eat food that has been in contact with flood water.
- Boil all tap water until supplies have been declared safe. Further information on safe drinking water during flooding can be found through Queensland Health and Red Cross.
- Do not use gas or electrical appliances which have been flood affected until safety checked by qualified personnel. Council may assist you with this.
- Beware of snakes and spiders that may have moved into drier areas in your house.
- Avoid swimming or even wading in shallow flood water, as it may be contaminated.
- Do not let children enter floodwaters.
- If you must enter flood water, wear solid shoes and check the depth with a stick.
- Check with the Disaster Coordination Centre through Council or the police for safe routes before driving anywhere.
- Do not go sightseeing. You may be putting yourself or other people in danger.
- **NEVER ENTER FLOOD WATERS IF YOU HAVE BEEN DRINKING ALCOHOL.** You are putting your life, and the lives of others at risk.

## IMPORTANT

**When disaster threatens, listen to your local radio station and follow all official warnings and advice.**

---

**Don't wade or swim in floodwaters, as it may be contaminated.**



Keep the SES Emergency number handy. Store it in your mobile phone!

# EVACUATION

Some of the threats mentioned in this plan may require partial or total evacuation of the population. This may be because of a threat of inundation, or to ensure that residents have continued access to essential facilities. Under normal circumstances, there are a number of possible evacuation centres in the Emerald and Gemfields area, such as halls, schools or other public and/or private facilities. Always listen to your radio for information about designated evacuation centres.

# PREPARATION

- Consult the evacuation zone maps in this booklet.
- Make sure you know what zone your home is in.
- Check with relatives or friends who are out of the inundation area, to ensure prior arrangements are still OK.
- Know the safest route to take.
- Prepare an emergency kit. Refer page 3 for details.
- Consider your irreplaceable family memories (photo albums, videos etc) and other items such as jewellery, passports, licences etc.
  - Have a plan to keep them secure.
  - Move them to a high part of your home or place them in plastic bags etc.
  - Take them with you.
- Ensure your car is full of fuel.
- If you don't have transport or require extra assistance, make sure you are registered with Council (refer inside front page) or make arrangements **PRIOR** to the storm season with relatives, friends, neighbours or others.
- Be a good neighbour. Check that those around you have made arrangements, especially older people, those living alone, people new to the area or those with limited English.
- Check your insurance policy.

## CAUGHT OUT?

### TIPS TO ASSIST EMERGENCY SERVICES IN LOCATING YOU:

If you live in a rural area and there is a chance your property could become isolated, paint your name, or the name of the property, on your roof.

It is also a good idea to have your GPS location written clearly and located near your phone.

## SELMA ROAD RESIDENTS

**Sunwater** is responsible for advising residents on Selma Road when evacuation is required. Also listen to your local radio station and heed all warnings and advice. Don't forget to advise authorities if you evacuate voluntarily before an evacuation order has been given.

## WHEN TOLD TO EVACUATE

- **Stay calm**
- Switch off electricity, gas etc.
- Collect your prepared emergency evacuation kit.
- Ensure you and your family are dressed appropriately for the conditions - jeans, sleeved shirts, strong footwear and a raincoat.
- Load the car quickly.
- Lock up your house.
- LISTEN TO YOUR RADIO AT ALL TIMES.
- DO NOT IGNORE WARNINGS OR ADVICE.
- DON'T FORGET YOUR PETS. Take them to your predetermined location, and don't forget their food and water.
- Act quickly, but calmly.
- Be aware of safety obstacles such as fallen power lines etc.
- Drive to your pre-arranged location, or the nearest accessible evacuation centre and register your details with the Disaster Co-ordination Centre.

### IF YOU DECIDE TO EVACUATE BEFORE DIRECTED ...

It's **VITAL** you phone the Disaster Coordination Centre, identify yourself and tell them where you're going. This way, friends and relatives can check your safety.

## IMPORTANT

**Listen to your radio; heed all warnings and advice**

**Evacuate immediately when advised by Police, SES or Fire Service**



Keep the SES Emergency number handy. Store it in your mobile phone!

## STRONG WINDS AND STORMS

Caravans and boats on trailers should be securely tied down. Emergency Management Australia has a comprehensive instruction guide.



To download the pamphlet from the website, go to <http://www.pfes.nt.gov.au>, click on 'Publications' in the left hand column, select 'Emergency Service' and click on the pamphlet called "Protecting Caravans".

## INDUSTRIAL/CHEMICAL ACCIDENTS

**What to do when you come upon the scene of an accident/spill involving hazardous materials.**

- Beware! An unplanned approach could result in being exposed to hazardous materials.
- Stay upwind and on high ground.
- Notify the police and/or fire services.
- Avoid contact with the material.
- Stay well away and keep others away until authorities arrive.

**What to do when a hazardous material accident/spill occurs within your area.**

- Stay indoors.
- Close doors and windows.
- Listen to the radio for further advice.
- Evacuate only when advised by police or fire service.

## URBAN AND RURAL FIRES

Fires should be treated similar to flooding, and may require evacuation.

**Stay and defend or go early?** It is essential you have a plan in case you or your family are ever at risk. The decision to stay and protect your home, or to evacuate, is up to you in most cases. It is important that you assess your resources, preventative actions and capabilities before making a decision.

### REMEMBER—LATE EVACUATION IS A DEADLY OPTION

If requested by authorities to evacuate your residence, follow the evacuation procedure listed in this Residents Guide.

- Switch off electricity, gas, etc.
- Close doors and windows.
- Lock up your house.
- Follow the evacuation routes or as advised.

## USING SANDBAGS FOR MINIMISING FLOOD DAMAGE

Floods may exceed the level of protection provided. Consideration should therefore be given to securing the property and evacuating the premises in the early stages of a flood, provided that it is safe to do so.

The following information has been provided by VicSES.

### **SANDBAGS**

While sandbags may offer some protection from water that is flowing past your property, it cannot hold out water over a period of time. It is therefore a measure to minimize flood damage from flowing water and waves from passing vehicles.

**Sandbag walls and plastic sheeting.** Construct sandbag walls on firm, flat surfaces to help prevent seepage or sandbag wall movement. On grass surfaces, especially thicker grass, it is recommended that the turf be removed before laying sandbags onto firm ground beneath. To further improve wall stability and water resistance, a bonding trench can be dug and a course of bags laid in the trench before constructing the rest of the wall.

Sandbag walls can be better waterproofed by installing plastic sheeting either on the water side or within the wall near the water side, as the wall is built.

### **Filling sandbags**

- Use brick or packing sand (not concrete sand – it just filters the water) or dirt from the garden
- Each sandbag must be filled correctly, or bags will not seal.
- 5 shovel fulls of sand per bag (no more than 2/3 to 3/4 full). Do not overfill bags. They must be of uniform size. Do not tie bags. Tied bags do not mould into shape correctly.

### **Basic laying techniques**

Lay bags horizontal and parallel to water, with seamless side, which is stronger, towards water flow. As a general rule, bags when laid should be centre grooved, not flat or convex, so that the next course, when laid, can interlock with the bags below.

## **Butt Method of Laying Sandbags**

- Fill bags to 2/3 full
- All bags to be laid so that seam is opposite to water flow
- Flap is folded underneath bag
- First bag is laid in direction of build
- Second bag is laid facing flap of first bag (flap to flap)
- All following bags are laid with flap end of the bag against butt end of previous bag - flap end is always away from direction of build.

## **Overlap Method of Laying Sandbags (preferred method)**

- Fill bags to 2/3 full
- Bag is laid so that seam is opposite to water flow
- First bag is laid with flap facing direction of build, flap is laid on ground
- Following bags are laid with butt of bag sitting on flap of previous bag
- Butt end of bags are therefore away from, or opposite to the direction of build.

### **Disclaimer**

The information provided in this document provides advice of a general nature to assist property owners. It is not inferred that any or all of these measures will totally eliminate flooding of buildings and / or property. Individual circumstances should be assessed and professional advice taken, where appropriate.



# NOTES

**Acknowledgements:**

Central Highlands Regional Council acknowledges the support and co-operation of other Councils and Emergency Services organisations across Australia in the preparation of this booklet.

**THIS PUBLICATION IS A JOINT PROJECT OF  
CENTRAL HIGHLANDS REGIONAL COUNCIL**



**AND**

**CENTRAL HIGHLANDS COMMUNITY  
RECOVERY PROGRAM**

