



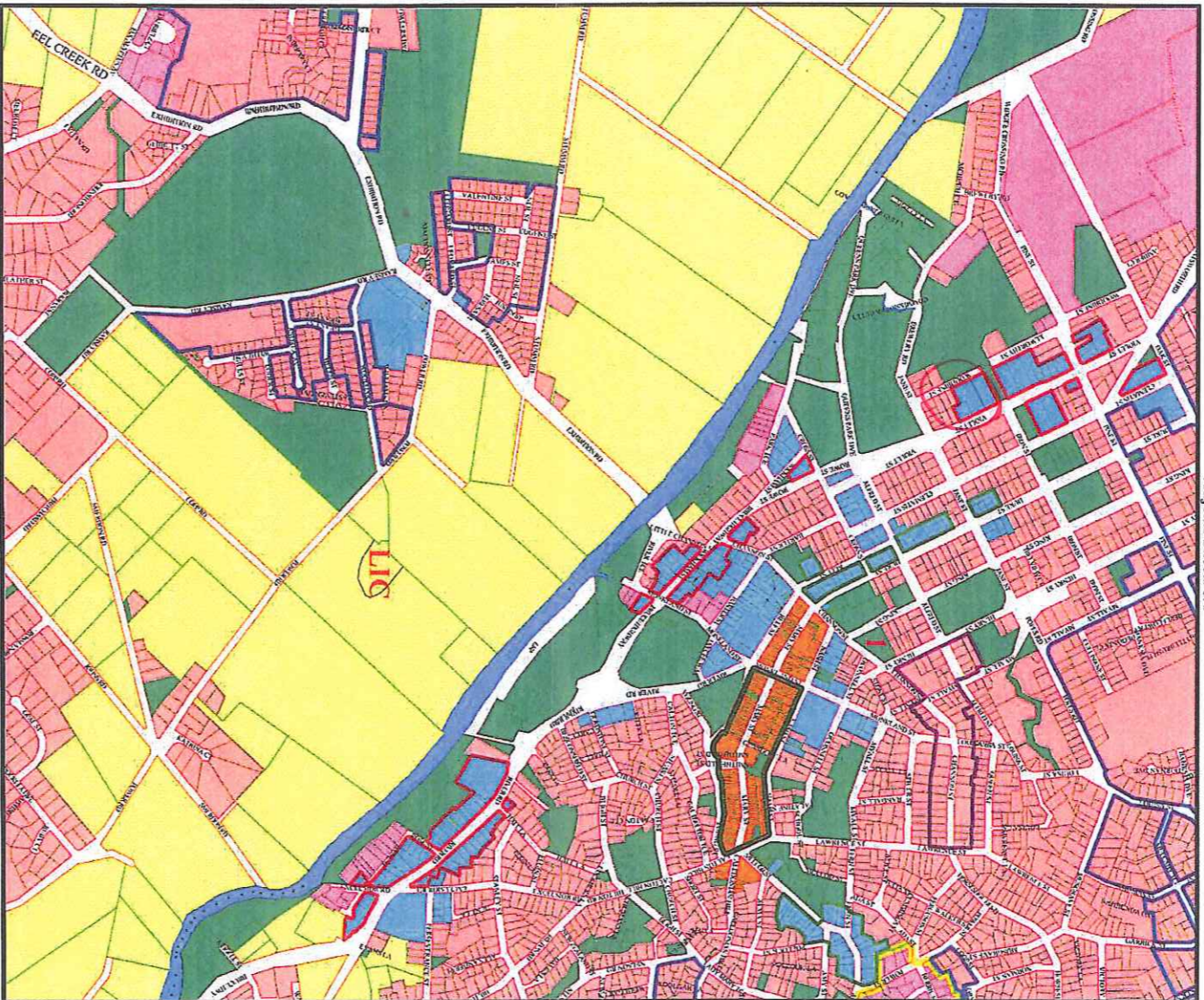
COOLOOLA SHIRE COUNCIL PLANNING SCHEME



Adjoins Sheets 5/6

Adjoins Sheet 10

Adjoins Sheet 12



Adjoins Sheet 18

GYMPIE PLANNING AREA
ZONING MAP ZM1 Sheet 11

- Zones**
- Rural
 - Community
 - Rural Residential
 - Housing
 - Commercial
 - Industry
 - Central Business
- Preferred Use Areas**
- Highway Services
 - Core Retail
 - Mixed Housing
 - Medical
 - Showroom
- 0 200 400
Metres
1:17500
Enderseed 29/03/2004

Cadastral Disclaimer:
While every care is taken to ensure the accuracy of this data, Cooloolo Shire Council and the Department of Natural Resources and Mines make no representations or warranties about its accuracy, reliability, completeness or suitability for any particular purpose and disclaims all responsibility and all liability (including without limitation liability in negligence) for all expenses, losses, damage (including indirect or consequential damage) and costs which might incur as a result of the data being inaccurate or incomplete in any way and for any reason.

Note - The following uses occur on premises indicated on the zoning map -
LIC Licensed Restaurant, Function Room, Golf Clubhouse and Ancillary Accommodation.

Note - This land is designated community infrastructure -
1 Community Infrastructure and further described as "court and police facilities including but not limited to law courts, cells, storage, office functions, office support facilities, amenities, parking, government offices with resource centre, commercial activities and support facilities, interview and detention rooms, watchhouse and district office". (See Schedule 13)