

**STATEMENT OF WITNESS**

**Date:** 17 October 2011

**Name of Witness:** Scott Walsh

**Address of Witness:** Level 1, 48 McDowall Street, Roma, QLD

**Occupation:** Area Director

**Division:** Emergency Management Queensland  
Department of Community Safety

I, **Scott Lincoln Walsh**, Area Director, Roma Area, South West Region, Emergency Management Queensland, Department of Community Safety state:

- I commenced employment with the (then) Department of Emergency Services in the position of District Coordinator of the Roma District, South West Region on 30 October 1995. I have worked in the South West Region / Roma Area to the current date with my title/position now being Area Director.
- During the last sixteen years, the roles and responsibilities of my position have primarily involved providing training, advice, assistance, administration and support to the SES Units,/,Groups, Local Governments and their Local Disaster Management Groups, and the District Disaster Coordinators and their District Disaster Management Groups.
- From approximately 2004, following legislative changes from the *State Counter Disaster Act 1974* to the *Disaster Management Act 2003*, I was appointed to the position of Executive Officer to the Charleville and Roma District Disaster Management Groups (DDMGs) — a role I performed until further legislative amendments to the *Disaster Management Act 2003* (in November 2010), where the Queensland Police Service were once again tasked with the requirement of fulfilling this role / position.
- During this period of time, I have undertaken training in a wide spectrum of both SES and Disaster Management Courses. For more information please find a copy of my learning history at Attachment "SW-1".

This is page 1 of a statement comprising 7 page/s.

**Witness (Scott Lincoln Walsh):** [Redacted]  
**(JP) Solicitor/Commissioner for Declarations:** [Redacted] *J.P. Gvill*

1. **Their role and position within Emergency Management Queensland (EMQ), including information about their direct supervisor and the person to whom they report in a disaster.**
  - 1.1 As previously stated, my current position and role with Emergency Management Queensland is as an Area Director. For more information please find a copy of my Position Description at Attachment "SW-2".
  - 1.2 My Direct Supervisor is the South West Regional Director (Robert Bundy), and he reports to the Director of Operations (EMQ) and the Assistant Director-General (EMQ).
2. **The SES units with their region/including details (if known) of any paid SES members within their region.**
  - 2.1 The following SES Units are located within the Roma EMQ Area:
    - Balonne Shire SES Unit
    - Bulloo Shire SES Unit
    - Maranoa Regional Council:
      - Mitchell SES Unit
      - Roma SES Unit
      - Surat SES Unit
      - Wallumbilla SES Unit
    - Murweh Shire SES Unit
    - Paroo Shire SES Unit
    - Quilpie Shire SES Unit
  - 2.2 To my knowledge, only the Murweh Shire SES Local Controller (who is an employee of the Local Government) is paid an annual subsidy by the Murweh Shire Council, as part of his negotiated role as SES Unit, Local Controller.
3. **The adequacy of current SES volunteer numbers (including any issues with recruitment and retention of members), level of training and equipment and resources available to SES units within their area/region.**
  - 3.1 The Roma Area SES Units / Groups are located in towns and communities ranging from regional urban communities to rural / remote communities, and as such numbers of members vary depending on the various communities and the willingness of residents to commit to the SES and its training requirements (usually conducted after hours or on weekends).

This is page 2 of a statement comprising 7 page/s.

<p>Witness (Scott Lincoln Walsh):</p> <p>[REDACTED]</p>	<p>(UP) Solicitor/Commissioner for Declarator</p> <p>[REDACTED]</p> <p><i>S.P. Walsh</i></p>
---	--

- 3.2 SES membership numbers within the Roma EMQ Area currently stand at 313 Active SES members and 185 Reserve members, over the six local government areas. These membership numbers are reviewed on a regular basis with the SES Unit / Group Executive Officers to ensure that we reflect an accurate account of active SES members.
- 3.3 Recruitment and retention of SES volunteers is, and always will be, an issue for the SES Units / Groups given the demands of employment, family commitments, tyranny of distance, and the declining degree of willingness of individuals to commit to volunteer organisations.
- 3.4 SES training is undertaken in accordance with the SES training curriculum. A document detailing the SES training pathways for SES members is attached and marked "SW-3" and the EMQ Course Guide is attached and marked "SW-4".
- 3.5 The level of training and resources is limited by the availability of funding, numbers of permanent and volunteer training officers / instructors, employment and family commitments, climatic conditions and tyranny of distance, which all have an impact on their service delivery capacity and capability.
4. **The mechanisms for receiving requests for assistance and the process for, and their role in, managing requests for assistance, including the prioritisation and/or management of competing requests for assistance.**
- 4.1 Requests for assistance are received from the SES 132 500 system, Local Government Call Centres, Local and District Disaster Coordination Centres.
- 4.2 My role in managing these requests lies entirely within my role in coordinating EMQ resources and functions (e.g. advice / supporting LDMG and DDMG resupply operations, Emergency Alert Warnings and support to SES operations), in consultation with the Regional Director, Local and District Disaster Coordinators and SES Local Controllers. All of these are prioritised according to their urgency and the availability of resources.
5. **Their authority for, and role in, the tasking and deployment of SES members, including local controller tasking/deployment, both when a disaster is declared and at other times.**
- 5.1 Legislatively, I do not have any authority to task Local Controllers and SES members. However, through good relationships and in consultation with Local Disaster Coordinators, Local Controllers and the Regional Director, I facilitate and coordinate SES assistance and support as requests for assistance are received.

This is page 3 of a statement comprising 7 page/s.

Witness (Scott Lincoln Walsh):

JP/Solicitor/Commissioner for  
Declarations

SP QUAL.

6. Whether any SES members within their area/region were deployed to another area/region during the 2010/2011 floods and, if so, the process by which this occurred and their role in it.

6.1 During the recent flooding operations, 4 members from the Wallumbilla SES Unit were deployed in to the Central Area (South West Region) to assist and support the Dalby and Chinchilla SES Units with flood boat operations. This was done in consultation with the Regional Director and the Wallumbilla SES Unit Local Controller.

7. Whether there are any SES units in their area with more than one Local Controller, and, where this is the case, a description of:

7.1 As mentioned previously, in the Maranoa Regional Council area there are four SES Units with one Local Controller each. These are: Mitchell SES Unit, Roma SES Unit, Surat SES Unit and Wallumbilla SES Unit.

(a) The history of this arrangement and how it works in practice (in view of the combined effect of sections 84A and 85 of the Disaster Management Act 2003);

7.2 The four Local Controller positions were all in place prior to the Local Government Amalgamations. When the amalgamation occurred, Local Government and the SES Units discussed the role/responsibilities of local controllers and it was decided to maintain the positions. This decision was based on the various geographical issues that arise throughout the region (including river systems, rural/remote communities etc). Ultimately, it was decided that the demands of the position were too big for one "volunteer" Local Controller to maintain effective command, control and coordination of SES resources / response, in relation to their individual SES rescue roles and disaster management arrangement responsibilities within their communities.

7.3 Each of these Local Controller reports to the Local Disaster Coordinator and the EMQ Area Director during operations, and consults / liaises with their neighbouring Local Controllers and SES Units to discuss and coordinate their unit's response, as required.

(b) How SES members are tasked and deployed in that unit;

7.3 All SES members are tasked / deployed by the Local Controller or their delegate (Deputy Controller, Group Leader) as per their Unit / Group command structure and procedures. These tasks / requests for assistance are received from the 132 500 system, Local Government Call Centres and directly from inter-agency requests (QPS, QFRS, QAS).

(c) The person ultimately responsible for that SES unit during a disaster;

7.4 Under current legislation, the relevant SES Local Controller is responsible for the SES Unit at all times.

This is page 4 of a statement comprising 7 page/s.

Witness (Scott Lincoln Walsh):

(JP) Solicitor/Commissioner for  
Declaration

J.P. Walsh

(d) How communications are coordinated among the various local controllers for SES unit during a disaster and the process of communicating with the local disaster coordinator;

7.5 SES Local Controllers liaise / consult with neighbouring SES Units, Local Disaster Coordinator and the EMQ Area office staff, to ensure that communication is maintained for effective coordination of their local SES resources, and to ensure that an appropriate response occurs in relation to the availability of SES Unit resources .

(e) Whether or not this arrangement is considered effective and/or whether or not it maybe subject to review or amendment.

7.6 I believe (as do the Local Controllers and Local Government) that this arrangement is effective, given the tyranny of distance and the geographical boundaries (river systems, terrain, etc). I also agree that the Local Controller position would be too big a job for one "volunteer" Local Controller, and in its current status allows for effective mutual support / assistance arrangements between the four SES Units and the communities within their operational areas during incident and disaster events.

8. The nature of their contact and coordination with any Local Disaster Coordinator, Local Disaster Coordination Centre, Local Disaster Management Group, and other EMQ officers during the 2010/2011 floods.

8.1 I am a member of the Local Disaster Management Groups. During the flood operations, I represented EMQ on the Maranoa Regional and Balonne Shire Local Disaster Management Groups, and assisted and supported the Local Disaster Coordinators and their staff in their Local Disaster Coordination Centres through the provision of disaster management advice and coordination of EMQ and SES resources and functions.

9. Any instances, during the 2010/2011 floods, where EMQ's requirements or expectations of the SES differed from those of the Local Disaster Management Group or Local Disaster Coordinator, and how these issues were managed.

9.1 No, not to my knowledge.

10. The Government (State and State/Commonwealth) funding programs accessed by SES units within their area in the financial years 2009-10 and 2010-11, and their role in all aspects of the funding application process and administration of this funding.

10.1 The SES Units are funded through the Annual SES Recurrent Funding, which is paid to the Local Governments to assist and support the SES Unit / Groups with their administration and operations. As well they (SES Unit and Local Governments) can also apply for funding to assist with the purchase of vehicles and accessories, and SES Building acquisition and

This is page 5 of a statement comprising 7 page/s.

Witness (Scott Lincoln Walsh):

JP/Solicitor/Commissioner for  
Declarations

JPQUM

Improvements, through the Annual SES Non-Recurrent Funding Program.

10.2 My role as an EMQ Area Director is to promote and provide advice on the funding programs to the SES Units and local Governments, and assist with the development of funding applications when requested by the individual SES Units and their Local Governments.

10.3 When the applications are submitted, we ensure that the applications are correctly completed and have the necessary supporting documentation, and when this is confirmed, submit them to the Regional Director for collation and submission to EMQ State Headquarters for processing and consideration for funding by the State Panel.

11. Whether or not issues have been raised with them directly by SES members about the level of funding provided by the State Government, including any suggestions by SES members about how the funding arrangement could be improved.

11.1 SES members often make comment on the level of funding provided by the State Government through the annual recurrent funding arrangements, and generally suggest that the amount needs to be increased, to enhance support to the SES Units/Groups in the provision of service to their communities.

12. The results of any assessment or debrief within their area relating to the performance of the SES units during the 2010/2011 floods.

12.1 All SES Units / Groups were encouraged to conduct operational debriefs to review their operational performance, suitability of resources and SES Unit/Group procedures to highlight any deficiencies requiring remedial action or correction. All SES Units / Groups provided feedback to the Local Disaster Management Group, through the LDMG post-operations debriefs, where they provided reports on their input and services provided, lessons learnt and recommendations for improvements to procedures, local disaster management arrangements and feedback on the suitability of resources. Some examples include:

- i) Issues with the accuracy of local flood-height monitoring and the timely availability of river-height info in some areas;
- ii) Members expressed some concern at having to rely on their own private mobiles telephones to communicate during an operation and suggested that each SES group should be given a mobile telephone for use during operations; and
- iii) In some instances rural properties did not provide advise on self-evacuations which caused additional work for SES members and made it difficult to determine which properties had self-evacuated and which properties required assistance.

This is page 6 of a statement comprising 7 page/s.

Witness (Scott Lincoln Walsh):

 Solicitor/Commissioner for  
Declaration

67084

**13. Any other observations on the structure, funding and command and control arrangement of the SES generally and/or in relation to the 2010/2011 floods, including possible areas for improvement, and any improvements made, or proposed to be made, in any of these aspects following the 2010/2011 floods.**


13.1 No, I do not have any further comment.

I make this statement of my own free will believing its contents to be true and correct

Justices Act 1886

I acknowledge by virtue of Section 110A(6)(c)(ii) of the Justices Act 1886 that:

- (1) This written statement by me dated 17/10/2011 and contained in the pages numbered 1 to 7 is true to the best of my knowledge and belief; and
- (2) I make it knowing that, if it were admitted as evidence, I may be liable to prosecution for stating anything that I know is false.

.....  ..... Signature

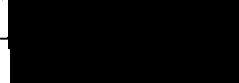
Signed at Roma this seventeenth day of October 2011

This is page 7 of a statement comprising 7 page/s.

Witness (Scott Lincoln Walsh):



JP/Solicitor/Commissioner for  
Declarations:

 TP Walsh

SW-1

## CURRICULUM VITAE

SCOTT L. WALSH

**ADDRESS:**

Level 1  
48 McDowall Street  
Roma Qld 4455

**CONTACT DETAILS:**

Work: [REDACTED]  
Mobile: [REDACTED]  
Email: [REDACTED]  
PO Box 141, Roma, QLD 4455

**DATE OF BIRTH:**

[REDACTED]

**NATIONALITY:**

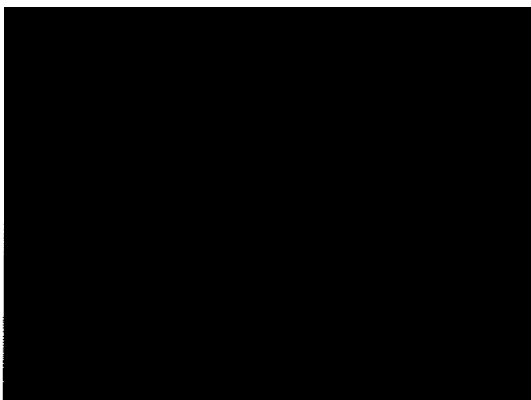
Australian

**CURRENT POSITION:**

Area Director – Roma Area Office  
South West Region,  
Emergency Management Queensland  
Department of Community Safety  
(30/10/1995 – Current Date)

**QUALIFICATIONS:**

Certificate IV Workplace Trainer and Assessor





SW-1

**OTHER TRAINING:**

- Certificate - Counter Disaster Planning  
Queensland 1993
- Certificate - Introduction to Disaster Management  
Queensland 1995
- Certificate - Vulnerability Assessment Planning  
Australian Emergency Management Institute  
1996
- Certificate - Plan Implementation/ECC Management  
Australian Emergency Management Institute  
1996
- Certificate - Exercise Management  
Australian Emergency Management Institute  
1996
- Certificate - Coordination Centre Operations  
Queensland 1997
- Certificate - Recovery Management  
Australian Emergency Management Institute  
Queensland 1999
- Certificate - Senior Disaster Managers Course  
Queensland 1999
- Certificate - Introduction to Emergency Risk Management  
Queensland 1999
- Certificate - Understanding Emergency Risk Management  
Australian Emergency Management Institute  
2002
- Certificate - Implementing Emergency Risk Management  
Australian Emergency Management Institute  
2002

**PROFESSIONAL  
ASSOCIATIONS:**

Member – Australian Institute of Emergency Services

Member – Development Team  
Guidelines for QLD Local Government Disaster  
Management Planning and Operations

Member – Development Team  
Guidelines for QLD Local Government Mass Evacuation  
Planning and Operations

Member – Development Team  
Understanding Emergency Risk Management Training  
Course

Implementing Emergency Risk Management Training  
Course

Australian Emergency Management Institute  
Victoria, - 1999

Visiting Lecturer  
Emergency Risk Management Courses  
Australian Emergency Management Institute  
Victoria, - 1999 – 2002 – 2004 – 2005 – 2006 - 2008

Member – Pacific Island Countries Advisory Team  
SOPAC program for Comprehensive Hazard and Risk  
Management. - 2003 – 2004 – 2005

Private Consultant – UNDP/UNOPs – Dhakar, Bangladesh  
Develop and Write Community Risk Assessment  
Guidelines for the Ministry of Food and Disaster  
Management, Government of Bangladesh. - 2005

**LANGUAGE PROFICIENCY:** English

**COUNTRIES OF  
EXPERIENCE:**

Australia, Western Samoa, Kiribati, Tonga, Bangladesh

**SUMMARY OF EXPERIENCE:**

Scott Walsh is a specialist in Disaster Risk Management in isolated rural remote areas, employed by the Queensland Department of Community Safety, in the Emergency Management Queensland Unit. He currently holds the position of Area Director, South West Queensland, responsible for the management of the Roma Area which incorporates two Disaster Districts (Roma and Charleville) and six Local Governments from Maranoa Regional Council in the east, south to the Balonne and Paroo Shires along the New South Wales border, north to Murweh and Quilpie Shires and west to the Bulloo Shire and the South Australian border.

His main role is to provide advice and assistance on the implementation of programs to mitigate the affects of natural disasters and major emergencies.

Within the Roma Area, he advises and assists Government Departments, Local Governments and Non-Government Organisations with all matters relating to disaster management and operations as well as Comprehensive Disaster Risk Management Programming, including risk management and mitigation strategies. These strategies focus on a Whole-of-Government solution to the reduction of risks to communities.

As an officer in the Department of Community Safety, he has provided advice and assistance to Local Governments and State Agencies in developing Disaster Management Plans, writing and conducting exercises to test plans and operational procedures and guidance during operations. He has extensive knowledge in working in Emergency Operations Centres during major emergencies and disasters at Local Government and Disaster District level.

Scott is a qualified Workplace Trainer and Assessor with extensive experience in providing Disaster and Risk Management training and facilitation to all levels of Government and Community Organisations.

His knowledge in this field has been utilised by Emergency Management Australia, the peak body in Australia for the provision of doctrine and training in emergency management, by his inclusion on the design team to develop risk management training courses, and to attend as a visiting lecturer at the Australian Training Institute.

**RELEVANT PROJECT EXPERIENCE:****Partnership with South Pacific Geo-Science Commission (SOPAC)**

Member of the Department of Emergency Services, Emergency Management Queensland team, established to provide assistance to SOPAC in the delivery of training courses, the conduct of workshops and the provision of Risk Management doctrine for use in Pacific Island Countries.

Member of the design team for a five-day course in Community Risk Management, as part of a Graduate Certificate studies program, developed for SOPAC for delivery into the Pacific Island Countries.

Writing a one-day training package for use by facilitators in Pacific Island Countries to train participants on how to implement Comprehensive Hazard and Risk Management (CHARM) into government and non-government agencies so that risk reduction will become part of day to day operations of the agencies.

### **Western Samoa - May 2003**

Travelled to Western Samoa and assisted [REDACTED] with a Risk and Disaster Management Review Study of the Government of Samoa – Infrastructure Asset Management Project which was funded by an International Development Association loan (WSO/AusAid). Outcomes from this project were to develop an understanding of Phase 1 of the Infrastructure Asset Management Project (IAM-1), that relate to Coastal Infrastructure Management and Disaster and Risk Management. Identify and summarise any supporting regional, government and private sector initiatives that are linked to, or support, the initiatives under IAM-1 and subsequently IAM-2 on risk assessment and disaster management that relate to Coastal Infrastructure Management and Disaster and Risk Management. Identify and summarise any supporting regional, government and private sector initiatives that are linked to, or support, the initiatives under IAM-1 and subsequently IAM-2 on risk assessment and disaster management.

Broadly consider any weakness or issues that may affect progress under IAM-2. This should cover legislative, institutional strength and staff capacity, the development and retention of tacit knowledge & skills that support the activities proposed under IAM-2. Also consider the wider government reforms in recognizing risk assessment and disaster management efforts in Samoa.

### **Kiribati – July 2003 - March 2004 – November 2004**

Travelled to Tarawa, Kiribati as part of the Queensland Department of Emergency Services two man team in support of the World Bank Mission to provide Specialist Risk Management training and provide assistance to the Risk Management Specialist. Outputs required from this project are as follows:

- Preparation of the CHARM Training packages for delivery
- Submit training packages for approval of the Adaptation Steering Committee
- Deliver 1-Day Sensitising Workshop in Tarawa
- Deliver 2# 4-Day CHARM Training Workshop in Tarawa
- Provide a 1 – Day CHARM applications training manual
- Provide a report through SOPAC to the Adaptation Steering Committee after each training activity

### **Tonga – May 2005**

Assisted as a team member of the Queensland Department of Emergency Services Project for “The Cyclone Emergency Recovery and Management Project” – (B.1 Component: Strengthening of Emergency and Risk Management Processes).

As a component of this project Queensland Department of Emergency Services with assistance from SOPAC was contracted to provide the Government of the Kingdom of Tonga, Cyclone Emergency Recovery and Management Project and it's steering committee, with support in capacity building in risk management, as well as the mainstreaming thereof, by introducing and applying its Comprehensive Hazard and Risk Management (CHARM) tool.

- Preparation of CHARM Training packages for delivery
- Deliver/facilitate 1 # 4-Day CHARM Training Workshop in Nuku'alofa

**Bangladesh – September 2005**

Worked as a private consultant for UNDP/UNOPs to develop a set of guidelines for the Government of Bangladesh, Ministry of Food and Disaster Management, Comprehensive Disaster Management Program (CDMP). These guidelines will assist Non-Government Organisations (NGOs) in the conduct of Community Risk Assessments which would incorporate current vulnerability assessments and also incorporate future risk/s such as climate change. The outputs of these assessments will then be utilised to assist the Government and Aid Donors in determining priorities for future projects and funding.

**AusAID**

**Commitments:** N/A


I, Scott Walsh, certify that this curriculum vitae is accurate and I acknowledge my willingness and availability to participate in the role for which I have been nominated.



28 June 2010

**Signature**

**Date**

REFEREES	
	

**Volunteer Details**

Reg No: [REDACTED] Appointed: 25/03/82  
 District: ROMA AREA Status: A  
 Unit: ROMA Category:  
 Group: ROMA Sub Category:

**Linked To:**

Name: MR SCOTT LINCOLN WALSH  
 Address: [REDACTED]  
 ROMA  
 Post Code: 4455 Phone(H): [REDACTED]  
 Sex: M Phone(W): [REDACTED]  
 Date of Birth: [REDACTED] Phone(M): [REDACTED]

Occupation: AREA DIRECTOR  
 Permanently Disabled: no  
 Employer: EMERGENCY MANAGEMENT QUEENSLAND  
 Employer Address: PO BOX 141  
 ROMA  
 Post Code: 4455

**Volunteer Qualifications**

AUSTRALIA DAY ACHIEVEMNT MEDAL  
 10 YR SERVICE CERTIFICATE  
 NATIONAL MEDAL

**Position History**

Position	Appointed	Resigned	Comment
MEMBER	25/03/82		
MEMBER	13/10/95		
STAFF OFFICER	19/02/04		

**Member Group History**

District	Unit	Group	In Date	Out Date
SWES	TARO	TARO	25/03/82	05/03/96
SWES	ROMA	ROMA	05/03/96	05/03/96
SWES	ROMA	ROMA	05/03/96	10/12/96
ROMA	ROMA	ROMA	10/12/96	09/05/00
SWST	ROMA	ROMA	09/05/00	

**Training Courses**

<b>Course</b>	<b>Completed</b>	<b>Certificate Trainer</b>
Stage 2 Senior First Aid	22/03/98	6878
INDUCTION	04/08/04	23635
SES FIRST AID (PUBLIC SAFETY)	09/03/07	32670
PROVIDE EMERGENCY CARE	11/03/07	34400
MANAGE INJURIES AT EMERGENCY INCIDENT PUAEME002B	11/03/07	34435
Stage 1 General Rescue	17/02/08	0
Stage 1 Safety	17/02/08	0
Stage 1 Maintenance	17/02/08	0
Stage 1 Storm Damage	17/02/08	0
Stage 1 Map Reading	17/02/08	0
Stage 1 Fieldcraft	17/02/08	0
Stage 1 Communications	17/02/08	0
Traffic Controller	09/08/98	7258
QAS/SES Senior First Aid Inst. Endorsement	22/03/98	5853
Road Accident Rescue Operator	02/04/95	005214
Traffic Controller Instructor	09/08/98	7323
General Instructor (Adults)	19/03/91	00614A
Road Accident Rescue Inst	17/03/96	4997
Instructor Development W/Shop	31/01/04	20023
Instructor Development W/Shop	18/06/06	
Instructor Development W/Shop	18/02/07	
Senior Instructor	26/10/93	02516
SEM0000 SES Induction	04/08/04	121722
SEM0001 Volunteering in SES	17/12/08	63814
SEM0001 Volunteering in SES	04/08/04	107159
SEM0010 SES Safety	17/12/08	63815
SEM0020 Communicate In The Workplace	13/04/10	132714
SEM0021 Operate Communications Equipment	17/12/08	63816
SEM0030DS MAP READING AND NAVIGATION DIRECT SUPERVISOR	06/08/10	143407
SEM0030TAA MAP READING AND NAVIGATION TRAINER ASSESSOR APPOINTMENT	06/08/10	143408
SEM0040 Maintaining SES Equipment	17/02/08	131049
SEM0101 Flood Boat Operator	27/04/93	117411
SEM0101TAA FLOOD BOAT OPERATOR TRAINER ASSESSOR APPOINTMENT	30/04/10	140570
SEM0201 Perform CPR	11/03/07	34416
SEM0201 Perform CPR	10/03/07	43317
SEM0202 Provide Basic Emergency Life Support	11/03/07	34453
SEM0202 Provide Basic Emergency Life Support	10/03/07	43324
SEM0203 Apply First Aid	11/03/07	34381
SEM0203 Apply First Aid	10/03/07	43331

SEM0203DS APPLY FIRST AID DIRECT SUPERVISOR	06/08/10	143409
SEM0203TAA APPLY FIRST AID TRAINER ASSESSOR APPOINTMENT	30/04/10	140571
SEM0206 Manage Injuries at Emergency Incident	11/03/07	128852
SEM0207 Provide Emergency Care	10/03/07	130477
SEM0207 Provide Emergency Care	11/03/07	130482
SEM0300 Participate in a rescue	06/01/10	114756
SEM0301 General Rescue	17/12/08	63817
SEM0302 Casualty Handling	17/12/08	63818
SEM0303 Ropes Knots And Holdfasts	17/12/08	63819
SEM0304 Ladders	17/12/08	63820
SEM0320 Emergency Lighting	17/12/08	63821
SEM0401 Road Crash Rescue	20/04/95	120050
SEM0401TAA ROAD CRASH RESCUE TRAINER ASSESSOR APPOINTMENT	30/04/10	142692
SEM0502 Land Search	14/04/94	118822
SEM0502DS LAND SEARCH DIRECT SUPERVISOR	06/08/10	143410
SEM0502TAA LAND SEARCH TRAINER ASSESSOR APPOINTMENT	30/04/10	140572
SEM0601 Storm Damage Operations	17/02/08	126712
SEM0601TAA STORM DAMAGE OPERATIONS TRAINER ASSESSOR APPOINTMENT	06/08/10	143411
SEM0801 Traffic Control Operations	09/08/98	110784
SEM0801DS TRAFFIC CONTROL OPERATIONS DIRECT SUPERVISOR APPOINTMENT	06/08/10	143412
SEM0801TAA TRAFFIC CONTROL OPERATIONS TRAINER ASSESSOR APPOINTMENT	30/04/10	140573
SEM1005 Briefings And Debriefings	14/04/94	118824
SEM2000 Introduction to Queensland's Disaster Management Arrangements Induction (2hr)	28/05/09	81431
SEM2004TAA QDMA Trainer Assessor Appointment	30/06/11	166507
SEM2016 Local Disaster Coordinator Induction	03/12/10	157182
SEM3110 Work In An Emergency Operations Centre	09/06/06	121723
SEM3111 Introduction to Incident Management	09/06/06	134833
SEM4003 Cert (IV) BSZ (EMQ)	28/08/01	113040
SEM4005 CORE SKILLS TRAINER APPOINTMENT	30/04/10	138333
Land Search Operator	14/04/94	02968
Flood Boat Operator	27/04/93	02167
Flood Boat Instructor	13/02/00	9877
Land Search Instructor	31/03/90	00211A
Land Search Instructor	16/05/99	8880
VR SI (Redundant Course)	07/07/91	00841A
Exercises	10/09/06	



TRAINER / ASSESSOR RTO INDUCTION	04/02/07	0	
CERTIFICATE IV Assessment & Workplace Training	28/08/01	12584	
Stage 2 Senior First Aid	05/08/01	13357	
QAS/SES Senior First Aid Inst. Endorsement	05/08/01	14277	
SEM0030 Map Reading and Navigation	13/07/10	143361	
SEM1003 Supervising SES Response	03/03/10	143406	
AIIMS	09/06/06	STA40573	
Land Search Instructor	03/06/00		✓
Stage 2 Senior First Aid	13/05/00		✓
Stage 2 Senior First Aid	21/03/98		✓
Land Search Operator	03/06/00		✓
Flood Boat Operator	19/03/05		✓
Road Accident Rescue Operator	11/10/97		✓
Stage 1 General Rescue	01/03/98		✓
Stage 2 Senior First Aid	21/03/98		✓
General Instructor (Adults)	15/05/98		✓
Land Search Operator	11/07/98		✓
Land Search Instructor	11/07/98		✓
Stage 1 Communications	06/02/99		✓
Land Search Operator	08/05/99		✓
Land Search Instructor	08/05/99		✓
Road Accident Rescue Operator	13/11/99		✓
Land Search Operator	06/05/99		✓
Land Search Operator	06/05/99		✓
Road Accident Rescue Inst	13/11/99		✓
Road Accident Rescue Operator	13/11/99		✓
Flood Boat Operator	12/02/00		✓
Flood Boat Instructor	12/02/00		✓
Stage 2 Boat Operation	09/04/00		✓
Flood Boat Operator	08/04/00		✓
Flood Boat Operator	04/03/00		✓
Flood Boat Instructor	04/03/00		✓
Air Observer	07/10/00		✓
Land Search Operator	26/08/00		✓
Stage 2 Senior First Aid	25/11/00		✓
Stage 2 Boat Operation	02/12/00		✓
Flood Boat Operator	02/12/00		✓
General Instructor (Adults)	20/01/01		✓
Land Search Operator	24/03/01		✓
Land Search Instructor	24/03/01		✓
Road Accident Rescue Operator	07/07/01		✓
Traffic Controller	02/06/01		✓
Stage 2 Senior First Aid	04/08/01		✓
Stage 2 Senior First Aid	04/09/01		✓

Stage 1 General Rescue	27/10/01	✓
Road Accident Rescue Operator	01/12/01	✓
Stage 2 Senior First Aid	04/08/01	✓
Stage 1 General Rescue	27/10/01	✓
Stage 2 Senior First Aid	27/07/02	✓
General Instructor (Adults)	22/02/03	✓
Flood Boat Operator	04/03/04	✓
Flood Boat Instructor	04/03/04	✓
Senior First Aid	04/09/01	✓
Flood Boat Operator	04/03/04	✓
Instructor Development W/Shop	26/06/04	✓
Instructor Development W/Shop	26/06/04	✓
Instructor Development W/Shop	05/02/05	✓
General Instructor (Adults)	05/03/05	✓
Instructor Development W/Shop	11/02/06	✓
Intro to Emergency Management	06/03/06	✓
Instructor Development W/Shop	17/06/06	✓
Flood Boat Operator	22/10/05	✓
Exercises	09/09/06	✓
Intro to Evac Mangt Course	20/03/07	✓
Instructor Development W/Shop	16/06/07	✓
Intro to Evac Mangt Course	29/05/07	✓
PROVIDE EMERGENCY CARE	10/03/07	✓
SEM0203 Apply First Aid	10/03/07	✓
SEM0202 Provide Basic Emergency Life Support	10/03/07	✓
SEM0201 Perform CPR	10/03/07	✓
MANAGE INJURIES AT EMERGENCY INCIDENT PUAEME002B	10/03/07	✓
UNDERTAKE FLOOD AND INLAND WATERWAYS RESCUE BOAT OPERATIONS	10/09/07	✓
OPERATE COMMUNICATIONS SYSTEMS AND EQUIPMENT	10/09/07	✓
PARTICIPATE IN A RESCUE OPERATION	10/09/07	✓
Road Accident Rescue Operator	07/11/07	✓
WORK IN A TEAM	10/09/07	✓
COMMUNICATE IN THE WORKPLACE	10/09/07	✓
WORK EFFECTIVELY IN A PUBLIC SAFETY ORGANISATION	10/09/07	✓
UNDERTAKE FLOOD AND INLAND WATERWAYS RESCUE BOAT OPERATIONS	10/09/07	✓
FOLLOW DEFINED OCCUPATIONAL HEALTH AND SAFETY POLICIES AND PROCEDURES	07/11/07	✓
WORK IN A TEAM	07/11/07	✓
Instructor Development W/Shop	16/02/08	✓
UNDERTAKE FLOOD AND INLAND	05/04/08	✓

WATERWAYS RESCUE BOAT OPERATIONS		
SEARCH AS A MEMBER OF A LAND SEARCH TEAM	24/05/08	✓
PROTECT AND PRESERVE INCIDENT SCENE	24/05/08	✓
WORK IN A TEAM	24/05/08	✓
OPERATE COMMUNICATIONS SYSTEMS AND EQUIPMENT	19/04/08	✓
WORK IN A TEAM	19/04/08	✓
SEARCH AS A MEMBER OF A LAND SEARCH TEAM	24/05/08	✓
SEM2503 District Exercise	23/11/08	✓
Instructor Development W/Shop	30/05/09	✓
SEM2000 Introduction to Queensland's Disaster Management Arrangements Induction (2hr)	16/06/09	✓
SEM0502 Land Search	02/11/09	✓
SEM0325 Protect and preserve an incident scene	30/11/08	✓
SEM4050 Training Development Workshop	13/02/10	✓
SEM0000 SES Induction	01/04/10	✓
SEM0101 Flood Boat Operator	12/03/11	✓
SEM2004 Queensland's disaster management arrangements	02/08/11	✓
SEM2004 Queensland's disaster management arrangements	02/08/11	✓

<--- End of Report --->

Database: AMS PRODUCTION Database

Generated By: [REDACTED]

Procedure: [REDACTED]

# role DESCRIPTION




---

<b>Title:</b>	Area Director
<b>Classification:</b>	AO6 (\$78,811 - \$84,318.)
<b>Employment Type:</b>	Permanent/Full Time
<b>Division:</b>	Emergency Management Queensland (EMQ)
<b>Branch:</b>	Operations Branch
<b>Region:</b>	South Western Region
<b>Location:</b>	Roma
<b>Vacancy Ref No:</b>	TBA
<b>Closing Date:</b>	TBA
<b>Contact Officer:</b>	Contact Officer Title Phone Number Email address

---

## PURPOSE OF THE ROLE

Operations Branch is established to ensure the efficient, effective and appropriate delivery of services for disaster management and the State Emergency Service, direct to clients such as local government, SES units and members, government agencies and to the public.

The Branch must have a client service focus and must ensure that services are aligned, integrated and easy to access.

The scope of issues covers matters occurring before, during and after disaster events. The Branch must ensure that EMQ maintains a state of operational readiness to fulfil its role as described in relevant legislation and to aid all participants in the disaster management system (state agencies, other levels of government, volunteer organisations, NGO's) to properly prepare, plan and train for their roles.

The Branch must ensure that disaster management systems and processes are up to date and support disaster management best practice. Further, the Branch has a particular focus on ensuring an effective training environment for disaster management and SES volunteers is in place and supported.

The purpose of the Regions is to directly deliver services to local disaster managers and the SES.

For the SES this means: Delivering and supporting SES training; managing local equipment needs; supporting the local controller in the performance of their duties; providing assistance in the coordination of SES operations and deployments; support to Emergency Service Cadets and Cadet adult leaders; and auditing condition of SES accommodation and equipment. To fulfil this role will require the establishment and maintenance of strong working relationships with local governments and local controllers.

For disaster management this means: delivering and supporting disaster management training; providing expert advice on accessing the Natural Disaster Resilience Program (NDRP); providing expert advice on the Natural Disaster Relief and Recovery Arrangements (NDRRA); support local government during disaster events; sit on Local Disaster Management Group and District Disaster Management Group; and conduct local post event reviews. To fulfil this role will require the establishment and maintenance of strong working relationships with local government, the Queensland Police Service, other DCS divisions and other government agencies.

**ARE YOU THE RIGHT PERSON FOR THE JOB?**

**Mandatory Requirements**

- Travel may be a considerable requirement of this role.
- Capacity to work on weekends to deliver training to volunteer audiences.

**Highly Desirable Requirements**

- The position is an identified position within the SES hierarchy. The appointee will be expected to become a member of the SES and will hold rank accordingly. A Criminal History Check will be required prior to appointment to the SES.
- Disaster management qualifications and/or experience.
- Experience working with volunteers, indigenous and rural communities.
- Operations management in a decentralised service delivery environment.
- Functions associated with this position require the appointee to be a Duty Officer and participate in an out of hours on-call roster. This may require frequent interruptions in response to issues raised within the Region.
- Capacity to participate in an out of hours on call roster during disaster operations. This may require work outside of normal hours (e.g. night shift), including weekends.
- Capacity to travel in support of operational requirements. This may require deployment to other parts of the State for an indeterminate period as necessary.
- Capacity to work extended hours during disaster operations.

**RESPONSIBILITIES**

- Support the development and implementation of the EMQ regional operational service delivery plan.
- Manage human resources, financial and asset management functions for the area.
- Advise and assist Government Departments, Local Government Authorities, Indigenous communities and non-Government agencies on comprehensive disaster management programming, including risk management and mitigation strategies, volunteer matters, the development and maintenance of disaster management and response plans.
- Provide strategic advice to the Regional Director on disaster management and response planning arrangements and programs for the Area.
- Provide advice and guidance for the proper conduct and assessment of Risk Management Studies and regularly report to the Regional Director on the activities of Study Advisory Groups and the suitability of Study Reports and Mitigation Plans.
- Provide the services as described in the Disaster Management Act 2003 for the Executive Officer of the District Disaster Management Group.
- Undertake whole of government response coordination functions, including the provision of advice to Disaster District Coordinators and Local Government Disaster Management Groups during large-scale disaster or emergency situations.
- Ensure the effective management of the SES volunteer support program, development and operation of District Support Units and the conduct of annual stock-takes of SES equipment program to ensure operational efficiency.
- Ensure the effective management of and compliance with policy and safety standards for the DCS Youth Program and support the department's Volunteer Marine Rescue assistance program.
- Provide advice and guidance to enhance the effectiveness of community education and awareness programs.
- The position will be required to frequently consult and negotiate with senior staff from Local Governments, other Government agencies, authorities, Indigenous communities and community groups to evaluate the effectiveness of disaster management programmes and to provide advice on residual risk mitigation strategies.
- Manage the effectiveness of the Area team in providing high quality support to its customers and address grievances in accordance with departmental policy and guidelines.
- Contribute to the development and implementation of operational and administrative policy, equipment and processes.
- Undertake operational duties during emergencies and disasters.

**BASIS FOR SELECTION**

1	Demonstrated achievements in the application of strategic and business planning, resource management and the ability to manage within allocated budgets to achieve agreed outcomes.
2	Demonstrated interpersonal, written and oral communication skills including the ability to prepare reports, develop and maintain effective relationships and networks, liaise, consult and negotiate with a diverse range of clients and stakeholders including volunteers, Indigenous Leaders, community groups and Local Government.
3	Demonstrated ability to lead and work as part of a multi-disciplinary team within a volunteer oriented and disaster management environment.
4	High level knowledge, or ability to rapidly acquire knowledge of, disaster management or risk management concepts and principles and their application within diverse environments.

**ADDITIONAL INFORMATION**

- Delegations and authority to act – this position may be required to exercise certain powers in accordance with legislation. Refer to the Agency's Instruments to Delegate Powers for details.
- This role description provides the minimum requirements for the role. The incumbent may be required to undertake other duties as required.
- On appointment to this position a probationary period may apply.
- All staff must comply with their responsibilities under the:
  - *The Workplace Health and Safety Act 1995* - <http://www.legislation.qld.gov.au/LEGISLTN/CURRENT/W/WorkplHSA95.pdf>; and
  - *The DES WHS Accountabilities Matrix* - <http://www.emergency.qld.gov.au/publications/pdf/DCS%20Accountability%20matrix%20oct%202009.doc>
- Reporting Relationships – this position reports to the Regional Director, South Western Region.
- Organisational structure – refer to the EMQ Portal page or contact officer.
- Delegations - in accordance with approved Human Resource (HR) and Financial Delegations.
- Pre-employment checking – reference checking, criminal history checking, and integrity checking may be undertaken as a condition of employment.

**OPERATIONAL DUTIES:**

During times of emergency or disaster, you may be required to participate in operational duties. This may require work outside of normal hours (e.g. night shift), including weekends and also necessitate deployment to other parts of the State for an indeterminate period as necessary. Operational duty hours of work will be in accordance with the Divisional Hours of Work Provisions. Entitlements and conditions for specified public service employees in critical incident circumstances is prescribed in the Critical Incident Entitlement and Conditions Directive.

**Want to know more? Refer to the Applicant Information Kit and visit the following website:**

[www.communitysafety.qld.gov.au](http://www.communitysafety.qld.gov.au)



# Minimum Training Pathways for SES Members

SES Functions	Storm Damage	Land Search	Vertical Rescue	Flood Boat	Road Crash Rescue	Traffic Management	Agency Support	Incident Management	Specialist Rescue	Community Education
<b>SES Team Leader Appointment</b>	Storm Damage Operations Team Leader	Land Search Team Leader	Vertical Rescue Team Leader		Road Crash Rescue Team Leader		Emergency Evacuation Centre Safety Officer	Incident Management Team Leader	Rescue Safety Officer	
<b>Minimum Training for SES Team Leader Role</b>	Supervising SES Response*	Supervising SES Response*	Supervising SES Response*		Supervising SES Response*		Establish and maintain a communications network	Supervising SES Response*		
<b>Safety Officer Appointment</b>	Storm Damage Safety Officer	Land Search Safety Officer	Vertical Rescue Safety Officer		Road Crash Rescue Safety Officer		Emergency Evacuation Centre Safety Officer	Incident Management Safety Officer	Rescue Safety Officer	
<b>Minimum Training for SES Safety Officer</b>	Risk Management	Risk Management	Risk Management		Risk Management		Risk Management	Risk Management	Risk Management	
<b>SES Sub-Functions Team Member/Operator Appointment</b>	Storm Damage Support Crew Member	Land Search Operator	Vertical Mobility Operator	Flood Boat Operator	Road Crash Rescue Team Member	Traffic Control Operator	Welfare Team Member	Execution Team Member	Rescue Operator	Urban Search and Rescue Cal. 1 Team Member
<b>Other Courses Not Listed to Rank</b>	Working Safely at Heights	Land Search	Vertical Mobility at Heights	Flood Boat Operator	Road Crash Rescue	Traffic Control Operations	TO BE DETERMINED	Introduction to Emergency Centre*	Rescue from heights and Depths	Urban Search and Rescue Cal. 1
<b>Minimum Training for SES Team Member/Operator Role</b>	Storm Damage Operations	Working Safely at Heights	Vertical Rescue at Heights	Apply First Aid	Apply First Aid	Emergency Lighting	Apply First Aid	Work in an Emergency Operations Centre	Emergency Lighting	TO BE DETERMINED
	Conduct briefings and Debriefings	Conduct briefings and Debriefings	Conduct briefings and Debriefings	Conduct briefings and Debriefings	Conduct briefings and Debriefings	Conduct briefings and Debriefings	Conduct briefings and Debriefings	Conduct briefings and Debriefings	Conduct briefings and Debriefings	Conduct briefings and Debriefings
	Introduction to Incident Management	Introduction to Incident Management	General Rescue	General Rescue	General Rescue	General Rescue	General Rescue	General Rescue	General Rescue	General Rescue
	Ropes, Knots and Hoists	Ropes, Knots and Hoists	Ropes, Knots and Hoists	Ropes, Knots and Hoists	Ropes, Knots and Hoists	Ropes, Knots and Hoists	Ropes, Knots and Hoists	Ropes, Knots and Hoists	Ropes, Knots and Hoists	Ropes, Knots and Hoists
	Ladders	Ladders	Ladders	Ladders	Ladders	Ladders	Ladders	Ladders	Ladders	Ladders
	Provide Basic Emergency Life Support	Provide Basic Emergency Life Support	Provide Basic Emergency Life Support	Provide Basic Emergency Life Support	Provide Basic Emergency Life Support	Provide Basic Emergency Life Support	Provide Basic Emergency Life Support	Provide Basic Emergency Life Support	Provide Basic Emergency Life Support	Provide Basic Emergency Life Support
	Operate Communications Equipment	Operate Communications Equipment	Operate Communications Equipment	Operate Communications Equipment	Operate Communications Equipment	Operate Communications Equipment	Operate Communications Equipment	Operate Communications Equipment	Operate Communications Equipment	Operate Communications Equipment
	Perform CPR	Perform CPR	Perform CPR	Perform CPR	Perform CPR	Perform CPR	Perform CPR	Perform CPR	Perform CPR	Perform CPR
	Volunteer in the SES	Volunteer in the SES	Volunteer in the SES	Volunteer in the SES	Volunteer in the SES	Volunteer in the SES	Volunteer in the SES	Volunteer in the SES	Volunteer in the SES	Volunteer in the SES
	SES Induction	SES Induction	SES Induction	SES Induction	SES Induction	SES Induction	SES Induction	SES Induction	SES Induction	SES Induction

NOTE: \*Name(s) in red are not yet developed

Start your training here

Version 2.0 September 2009

- This poster shows the minimum training courses that must be successfully completed prior to a member being eligible for consideration as an appointed team member, operator, safety officer or leader.
- This poster should be read in conjunction with the SES Course Guide which provides further details on its use.
- The courses identified at each level of rank must be completed before undertaking the course(s) at higher rank that each training course is undertaken within each rank level is not important.
- Details of each of the listed courses, as well as reference to extension courses that are not listed on this poster, may be found in the SES Course Guide.

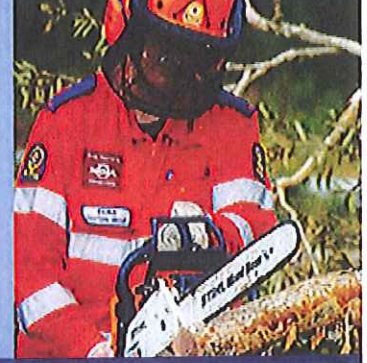
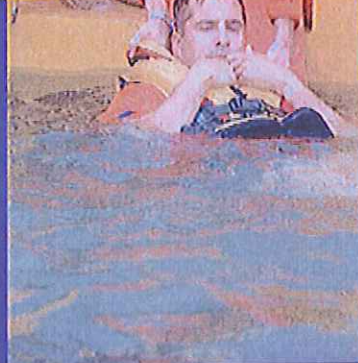
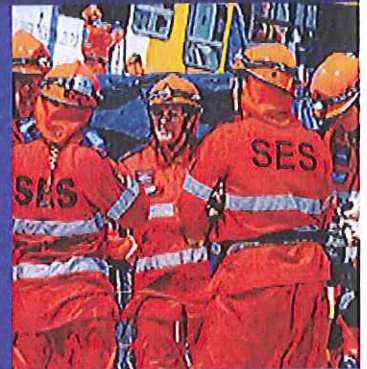


5W-4

EMQ School of Emergency Management

# SES Course Guide

Version 2.0



Proudly Supported by

**NRMA**  
INSURANCE



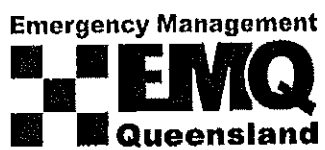
Emergency Management  
**EMQ**  
Queensland



**Queensland**  
Government



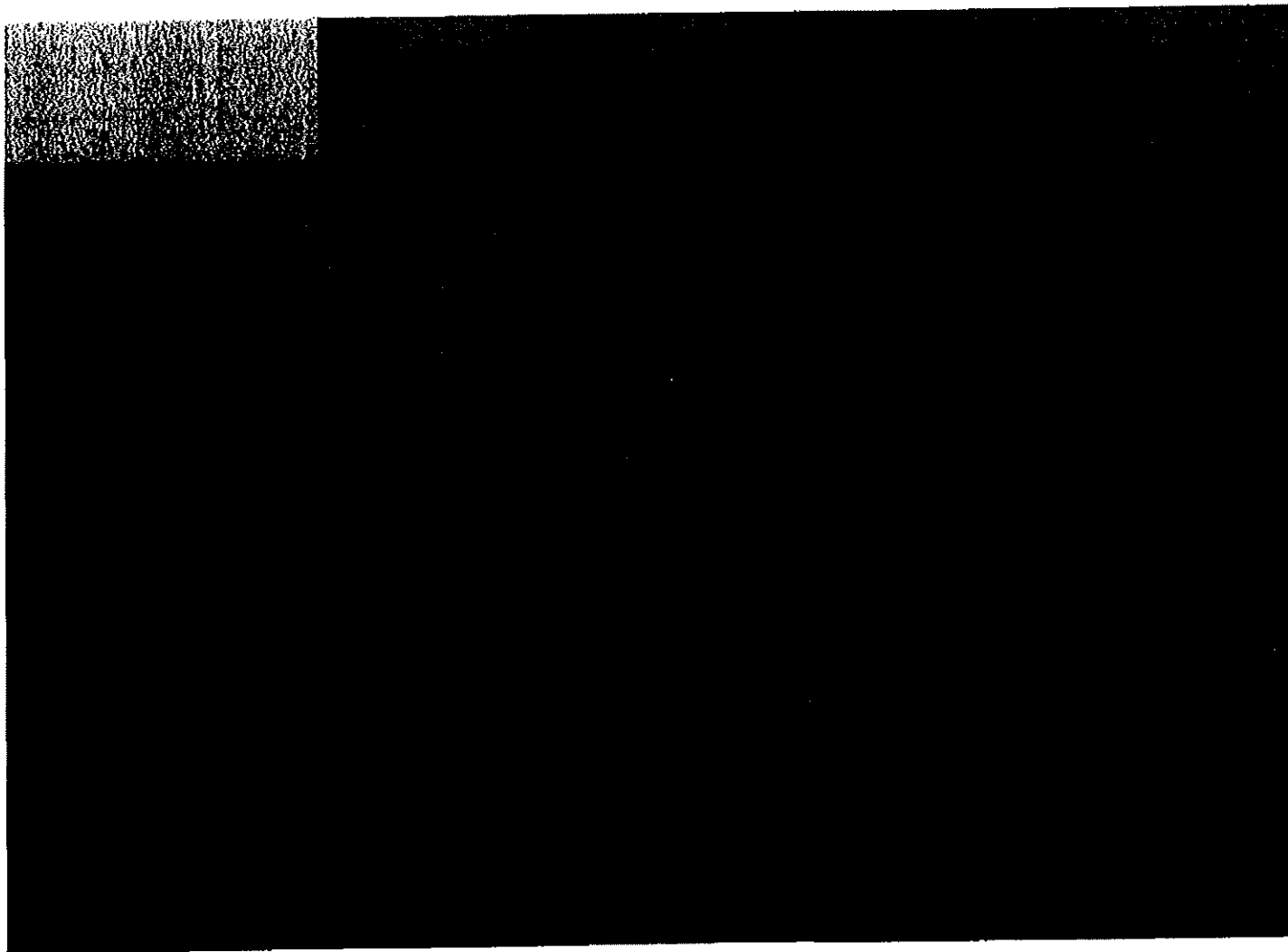
SW4



Designed for use within the Queensland State Emergency Service

## SES Course Guide

Version 2.0



SW4

**DISCLAIMER**

The systems, policies, procedures and techniques covered by this Course Guide are those adopted and approved for use within the Queensland State Emergency Service. Every effort has been made to ensure that the information contained in this guide is accurate and where possible reflects current best practice. However, Emergency Management Queensland, Department of Community Safety (including the Queensland State Emergency Service) – does not give any warranty or accept any liability in relation to the content contained in this guide.

©State of Queensland (Department of Community Safety) – 2011

No part of this publication may be reproduced, stored in a retrieval system or transmitted, in any form or by any means, electronic, mechanical, photocopying, recording or other means, without prior written permission of the copyright owner.

Apart from any use permission under the Copyright Act (1968)

SW 4

## Contents

Introduction.....	3
How to use this guide .....	4
SEM0000 SES Induction .....	6
SEM0001 Volunteering in the SES .....	7
SEM0010 SES Safety.....	8
SEM0011 Risk Management .....	9
SEM0019 SES Safety Officer .....	10
SEM0021 Operate Communications Equipment.....	11
SEM0030 Map Reading and Navigation.....	12
SEM0101 Floodboat Operator Level 1.....	13
SEM0201 Perform CPR .....	14
SEM0202 Provide Basic Emergency Life Support .....	15
SEM0203 Apply First Aid .....	16
SEM0301 General Rescue.....	17
SEM0302 Casualty Handling .....	18
SEM0303 Ropes, Knots and Holdfasts.....	19
SEM0304 Ladders.....	20
SEM0320 Emergency Lighting .....	21
SEM0325 Protect and Preserve an Incident Scene .....	22
SEM0350 Urban Search and Rescue Category 1 .....	23
SEM0401 Road Crash Rescue .....	24
SEM0502 Land Search .....	25
SEM0510 Air Observer .....	26
SEM0601 Storm Damage Operations.....	27
SEM0602 Working Safely at Heights.....	28
SEM0604 Working Safely at Heights – Ground Crew.....	29
SEM0701 Chainsaw Operations Level 1.....	30
SEM0801 Traffic Control Operations .....	31
SEM0901 Vertical Mobility .....	32
SEM0902 Vertical Rescue.....	33
SEM1005 Conduct Briefings and Debriefings .....	34
SEM2001 Introduction to Queensland's Disaster Management Arrangements Induction.....	35
SEM3110 Work as a Team Member in an Emergency Operations Centre.....	36
SEM3111 Introduction to Incident Management .....	37

SW4

## About this guide

This Course Guide has been developed for the use of staff and volunteers of Emergency Management Queensland.

Written feedback about this guide is welcomed. Please send it to:

Principal Program Officer  
Education and Training Services  
Emergency Management Queensland  
Department of Community Safety  
GPO Box 1425  
BRISBANE QLD 4001

Or email:  
[emqtraining.feedback@dcs.qld.gov.au](mailto:emqtraining.feedback@dcs.qld.gov.au)

## Acknowledgements

Acknowledgement is made of the staff of Emergency Management Queensland and volunteer members of the Queensland State Emergency Service who contributed to the development and design of this Course Guide.

## Authorisation

This Course Guide is an authorised, version-controlled document. The content provided in this guide reflects organisational policy and procedures, where these exist. This is an authoritative document that replaces all previous training references associated with this topic, where applicable. The information contained within this text reflects the SES Operations Doctrine at the time of printing.

SW4

## Introduction

Natural and human-caused emergencies and disasters are common occurrences in Queensland. Fortunately, organisations such as the State Emergency Service (SES) exist to provide a valuable community service during such events. The Queensland SES prepares for, responds to and assists with the recovery of the community from a disaster or emergency. The Queensland SES has ten functional roles, from which individual SES groups and units have been allocated some or all of, in line with the needs of the local community.

The ten functional areas are:

- Storm damage
- Land search
- Vertical rescue
- Floodboat
- Road crash rescue
- Traffic management
- Agency support
- Incident management
- Specialist rescue
- Community education

To provide a competent volunteer workforce across these ten functional areas requires quality resources and quality training.

This guide has been developed to provide detailed information about each of the SES and Emergency Management Module (SEM) courses that are available, or will be made available to SES members. It includes information on course prerequisites, delivery and assessment methods as well as expected course duration and awards.

All nationally accredited courses outlined in this guide are from Certificates II and III in Public Safety (SES) training packages. A Certificate and Statement of Results can be issued to a participant upon the successful completion of all relevant competencies for each qualification and an application is submitted. It should be noted that all members are required to undergo an induction process upon first joining the SES and prior to undertaking any of the other training courses outlined in this guide. Limits apply to what training and SES activities a member can undertake prior to attaining the rank of *Community Member*.

A *Community Member* is someone who has successfully applied for, and has been appointed the rank, once they have competently completed *Induction, Volunteering in the SES, SES Safety* and *Perform CPR* training.

This guide is accurate at the time of printing, but will remain a dynamic document. As organisational and external factors dictate, changes to courses such as prerequisites and methods of delivery, will periodically occur.

SW4

## How to use this guide

This guide provides information on each of the SEM training courses. The following information is provided for each course:

- Description of the course
- Whether or not it is nationally accredited
- Award/s issued (Statement of Attainment or Statement of Achievement) upon successful completion
- Course prerequisites
- Pre-course requirements
- Course delivery methods
- Approximate course duration
- Course assessment details.

Below is further detail on what you might find under each heading against each of the SEM courses.

### **Descriptor**

This provides a brief description of what the successful participant upon the completion of this course should be able to demonstrate in regard to skills and knowledge in a variety of SES operations and training activities.

### **Nationally accredited course**

This will indicate to the participant whether or not the successful completion of this course will result in a nationally accredited unit of competence being issued. If the course is nationally accredited, the Statement of Attainment and qualification that the successful participant receives, is theirs for life and is recognised throughout Australia and within any relevant industry.

For example, successful completion of SEM0701 Chainsaw Operations Level 1 will see the participant issued with a Statement of Attainment *FPICOT2221A Trim and Cross Cut Felled Trees*, which is a recognised requirement for some forestry or tree lopping employment.

### **Award/s**

Emergency Management Queensland (EMQ) has developed the SES course code to assist in the management of courses it provides.

As a Registered Training Organisation (RTO), EMQ provides two types of courses. These are either accredited courses where participants will receive a *Statement of Attainment* or non-accredited courses where participants will receive a *Statement of Achievement*. Further information can be found in the Participant Information Guide (PIG) or by consulting with your group/unit training officer.

There are several individual SES courses where upon successful completion; members will be issued a Statement of Attainment. For example SEM0010 SES Safety will result in the direct credit and issue of *PUA0HS001C Follow Defined Occupational Health and Safety Policies and Procedures*.

### **Prerequisites**

Before undertaking certain training courses participants may be required to obtain relevant skills which are known as prerequisites. These prerequisites

SW4

may be an approved organisational requirement or a requirement of the Public Safety Training Package unit of competency. Public safety training courses such as Road Crash Rescue have mandatory prerequisites that are relevant to this unit of competency.

All prerequisites listed against a course must be met prior to enrolment in that particular course.

At no point in time are groups, units or regions to impose additional prerequisites without the prior written approval of the Principal Program Officer, Education and Training Services, EMQ.

Undertaking prerequisite training will assist participants in gaining the underpinning knowledge and skills required and cut down on wasted time in higher level courses. For example, a participant must be able to tie specific knots and know how to safely climb a ladder prior to undertaking higher level working safely at heights training.

#### **Pre-course requirements**

Some SEM courses have additional pre-entry requirements that are not just training courses. For example, a participant might be required to have good eye sight and not be susceptible to motion sickness, prior to enrolling for air observer training as these are crucial elements for a successful outcome to the course.

#### **Course delivery**

This provides a summary of the methods available for course delivery. Most courses are designed to be delivered through a variety of methods in a range of environments including outdoors and classroom surrounds. This enables the trainers to select the most suitable options to provide flexible delivery to the participants.

It is not always practicable or convenient to conduct all training in a central location and as a result EMQ have developed a range of flexible self-paced learning tools in the form of DVD's and workbooks. Other formats are currently under development. These options are only available for limited courses at this point in time as indicated in the guide.

#### **Approximate course duration**

The times indicated in the guide are an approximate only and will vary depending upon the method of delivery, number of participants and the level of prior skills and knowledge of the participants. The approximate course duration listed for each SEM course is generally based upon a class of 24 participants with the required minimum number of appropriate trainer/ assessors.

#### **Course assessment**

This provides an outline of how the assessment will be conducted. Participants may be assessed using a variety of methods including practical demonstration of their skills, written or oral questioning or through a combination of these. Further information relating to course assessment is provided in the relevant Assessment Guide, Training Assessment Guide or within the course Training Resource Kit (TRK).

SW4

## SEM0000 SES Induction

### Descriptor

This course is designed to provide members with a basic understanding of their unit/group leadership, procedures, safety and the rights and responsibilities of SES members.

Queensland workplace health and safety legislation requires workplace inductions for all new staff and volunteers to ensure that they have an understanding of:

- the principals of workplace health and safety, safety procedures and responsibilities relating to the SES and work environments
- their rights and responsibilities under workplace health and safety legislation and SES policies
- the functions, protocols and procedures of unit and group operations.

All volunteers are to undertake SES Induction training within three weeks of commencement to minimise their exposure to risk.

### Nationally accredited course:

- No

### Award/s:

- Nil

### Prerequisites:

- Nil

### Pre-course requirements:

- Nil

### Course delivery:

- This course is designed to be delivered face to face in an indoor environment as a discussion based activity.
- It should be facilitated by a representative or a number of representatives from your SES group or unit.

### Approximate course duration:

- This course is undertaken over approximately four hours.

### Course assessment:

- This course has no assessment activity.
- All participants must complete the training and sign the SES Induction Checklist prior to undertaking any other training activity within the SES.



SW4

## SEM0001 Volunteering in the SES

### Descriptor

This course is designed to provide members with the knowledge required to have an understanding of the functions of the agencies associated with the SES and their roles.

It also provides information regarding SES Code of Conduct, Workcover, member wellbeing, the organisation's structure and where SES members fit within the organisation.

### Nationally accredited course:

- Yes

### Award/s:

Members who successfully complete this course will receive a:

- Statement of Attainment PUATEA004C Work Effectively in a Public Safety Organisation
- Statement of Attainment PUACOM001C Communicate in the Workplace
- Statement of Attainment PUATEA001B Work In a Team

### Prerequisites:

- SEM0000 SES Induction

### Pre-course requirements:

- Nil

### Course delivery:

- This course is designed to be delivered through a variety of methods in an indoor environment.
- Participants are able to undertake this course self paced using the Participant Guide and Assessment Activity Booklet.
- Participants are required to participate in regular group training activities and meetings within a three month period.

### Approximate course duration:

- This course is undertaken within three months of a member joining the SES.

### Course assessment:

- This course is assessed by completing a self paced Assessment Activity Booklet. This provides a record of evidence that demonstrates the achievement of competency over a period of time as an SES member.
- It is recommended that participants achieve this competency within three months of joining SES.

SW4

## SEM0010 SES Safety

### Descriptor

This course is designed to provide members with the knowledge and skills required to have an understanding of what is needed to work safely as an SES member.

The participant will be provided with training to follow relevant emergency procedures, the risk management process and various safety obligations of SES members in training and operational environments.

Through completion of this course the participant will be encouraged to demonstrate safe working practices in SES training and operations.

### Nationally accredited course:

- Yes

### Award/s:

Members who successfully complete this course will receive a:

- Statement of Attainment *PUAOHS001C Follow Defined Occupational Health and Safety Policies and Procedures*

### Prerequisites:

- SEM0000 SES Induction

### Pre-course requirements:

- Nil

### Course delivery:

- This course is designed to be delivered through a variety of methods and in a range of environments.

### Approximate course duration:

- This course is undertaken over approximately six to eight hours.

### Course assessment:

- This course is assessed by completing a variety of practical activities and an Assessment Activity Booklet requiring some written responses.
- It is recommended that participants achieve this competency within three months of joining SES.

SW4

## SEM0011 Risk Management

### Descriptor

This course is designed to provide members with the knowledge and skills required to effectively carry out the risk management process during operational situations and when planning SES training and activities.

### Nationally accredited course:

- No

### Award/s:

Members who successfully complete this course will receive a:

- Statement of Achievement SEM0011 Risk Management

### Prerequisites:

- SEM0000 SES Induction
- SEM0001 Volunteering in the SES
- SEM0010 SES Safety

### Pre-course requirements:

- A reasonable level of literacy is necessary for this course as participants are required to perform functions that utilise these skills.

### Course delivery:

- This course is designed to be delivered through a variety of methods and in a range of environments.

### Approximate course duration:

- This course is undertaken over approximately six hours.

### Course assessment:

- This course is assessed by completing a variety of practical and written activities.

SW4

## SEM0019 SES Safety Officer

### Descriptor

This course is designed to provide members with the knowledge and skills required to recognise potential health and safety risks and take the necessary action in operational and training environments.

Upon the successful completion of this course the participant will be able to undertake the role of safety officer in SES functions where they have previously demonstrated a high level of underpinning knowledge and skills.

### Nationally accredited course:

- Yes

### Award/s:

Members who successfully complete this course will receive a:

- Statement of Attainment *PUAOHS002B Maintain Safety at an Incident Scene*

### Prerequisites:

- SEM0000 SES Induction
- SEM0001 Volunteering in the SES
- SEM0010 SES Safety

### Pre-course requirements:

- Recognised field experience and qualifications in relevant operational functions.
- A reasonable level of literacy is necessary for this course as participants are required to perform functions that utilise these skills.
- Optional completion of the pre-course DVD flexible learning activities.

### Course delivery:

- This course is designed to be delivered through a variety of methods and in a range of environments.
- Participants have the option of completing the self-paced flexible learning DVD prior to attending the course.

### Approximate course duration:

- This course is undertaken over approximately five hours.
- Where the optional self-paced flexible learning DVD is used, gap training and assessment is undertaken over approximately two hours.

### Course assessment:

- This course is assessed by completing a variety of practical activities and an Assessment Activity Booklet requiring some written responses.

SW4

## SEM0021 Operate Communications Equipment

### Descriptor

This course is designed to provide members with the knowledge and skills required to effectively transmit and receive communications in routine and operational situations using SES communications and systems and equipment.

### Nationally accredited course:

- Yes

### Award/s:

Members who successfully complete this course will receive a:

- Statement of Attainment *PUAOPE002B Operate Communications Systems and Equipment*

### Prerequisites:

- SEM0000 SES Induction

### Pre-course requirements:

- A reasonable level of literacy is necessary for this course as participants are required to perform functions that utilise these skills.

### Course delivery:

- This course is designed to be delivered through a variety of methods and in a range of environments.

### Approximate course duration:

- This course is undertaken over approximately six hours.

### Course assessment:

- This course is assessed by completing a variety of practical activities and an Assessment Activity Booklet requiring some written responses.

SW4

## SEM0030 Map Reading and Navigation

### Descriptor

This course is designed to provide members with the knowledge and skills required to effectively read maps and navigate in urban and rural environments.

### Nationally accredited course:

- Yes

### Award/s:

Members who successfully complete this course will receive a:

- Statement of Attainment *PUAOPE003B Navigate in Urban and Rural Environments*

### Prerequisites:

- SEM0000 SES Induction

### Pre-course requirements:

- A reasonable level of literacy and numeracy is necessary for this course as participants are required to perform functions that utilise these skills.
- Optional completion of the pre-course DVD flexible learning activities.

### Course delivery:

- This course is designed to be delivered through a variety of methods and in a range of environments.
- Participants have the option of completing the self-paced flexible learning DVD prior to attending the course.

### Approximate course duration:

- This course is undertaken over approximately 16 hours.
- Where the optional self-paced flexible learning DVD is used, gap training and assessment is undertaken over approximately eight hours.

### Course assessment:

- This course is assessed by completing a variety of practical activities and an Assessment Activity Booklet requiring some written responses.

SW4

## SEM0101 Flood Boat Operator Level 1

### Descriptor

This course is designed to provide members with the knowledge and skills required to safely and effectively operate a SES floodboat and carry out tasks associated with flood and inland water situations.

### Nationally accredited course:

- Yes

### Award/s:

Members who successfully complete this course will receive a:

- Statement of Attainment *PUASES003B Undertake Flood and Inland Waterways Rescue Boat Operations*

### Prerequisites:

- SEM0000 SES Induction
- SEM0001 Volunteering in the SES
- SEM0010 SES Safety
- SEM0021 Operate Communications Equipment
- SEM0201 Perform CPR
- SEM0303 Ropes, Knots, and Holdfasts

### Pre-course requirements:

- A pre-course workbook must be completed and submitted prior to the commencement of the course.
- Participant must be over 18 years of age and hold a current motor vehicle licence for purpose of assessment activities.

### Course delivery:

- This course is designed to be delivered through a variety of methods and in a range of environments.

### Approximate course duration:

- This course is undertaken over approximately four days and incorporates a night time component.

### Course assessment:

- This course is assessed by completing a variety of practical activities and an Assessment Activity Booklet requiring some written responses.
- Participant will be required to complete a 50m swim wearing SES personal protective equipment and a personal floatation device as part of this assessment.

SW4

## SEM0201 Perform CPR

### Descriptor

This course is designed to provide members with the knowledge and skills required to effectively carry out Cardiopulmonary Resuscitation (CPR) if the need arises during operational situations, when engaged in SES training and activities or in everyday life.

### Nationally accredited course:

- Yes

### Award/s:

Members who successfully complete this course will receive a:

- Statement of Attainment *HLTCPR201A Perform CPR*

### Prerequisites:

- SEM0000 SES Induction

### Pre-course requirements:

- Optional completion of the pre-course DVD flexible learning activities.

### Course delivery:

- This course is designed to be delivered through a variety of methods in an indoor environment.
- Participants have the option of completing the self-paced flexible learning DVD prior to attending the course.

### Approximate course duration:

- This course is undertaken over approximately four hours.
- Where the optional self-paced flexible learning DVD is used, gap training and assessment is undertaken over approximately two hours.

### Course assessment:

- This course is assessed by completing a variety of practical activities and an Assessment Activity Booklet requiring some written responses.



SWK

## SEM0202 Provide Basic Emergency Life Support

### Descriptor

This course is designed to provide members with the knowledge and skills required to effectively recognise and respond to potentially life threatening emergencies using basic life support measures.

### Nationally accredited course:

- Yes

### Award/s:

Members who successfully complete this course will receive a:

- Statement of Attainment *HLTCPR201A Perform CPR*
- Statement of Attainment *HLTFA201A Provide Basic Emergency Life Support*

### Prerequisites:

- SEM0000 SES Induction

### Pre-course requirements:

- Optional completion of the pre-course DVD flexible learning activities.

### Course delivery:

- This course is designed to be delivered through a variety of methods in an indoor environment.
- Participants have the option of completing the self-paced flexible learning DVD prior to attending the course.

### Approximate course duration:

- This course is undertaken over approximately six hours.
- Where the optional self-paced flexible learning DVD is used, gap training and assessment is undertaken over approximately three hours.

### Course assessment:

- This course is assessed by completing a variety of practical activities and an Assessment Activity Booklet requiring some written responses.

[REDACTED]

---

From:

Sent:

Wednesday, 19 October 2011 9:03 AM

To:

Cc:

Subject:

Re: Sale by The State of Queensland (represented by Department of Health) to The Uniting Church in Australia Property Trust -Eventide Sandgate (File no HPS123/178)

Attachments:

CL\_DOCS-#3375838-v1-BLUE\_CARE\_-\_File\_handover\_memo.DOC



CL\_DOCS-#337583  
3-v1-BLUE\_CARE\_...

Dear [REDACTED]

As per your request I have handed the above file to [REDACTED] I have had a meeting with [REDACTED] this morning and given him a run down on the matter and what steps have to be taken to progress the matter. I have also done a File hand over memo and given it to [REDACTED]. A copy that it is attached to this email for your reference. I have asked [REDACTED] to get in touch with the relevant parties to inform them that he will be taking the conduct of the matter here on. I have also told Wayne that if he has any questions to ask me and I am happy to assist.

Thanks

Yours Faithfully

[REDACTED]  
Principal Lawyer  
Property and Infrastructure Team  
Commercial and Infrastructure Branch  
Crown Law  
State Law Building  
50 Ann Street  
Brisbane, Queensland 4000  
Phone: [REDACTED]  
Fax: ([REDACTED])  
Email: [REDACTED]

## Memorandum

**To:** [REDACTED]  
**From:** [REDACTED] Principal Lawyer  
Commercial and Infrastructure Branch  
**Date:** 19 October 2011  
**Subject:** Sale to Blue Care - Eventide Sandgate - Development Application and Ministerial Designation  
**Reference:** CP7/HPS123/178/JZW

---

Dear [REDACTED]

I have been asked by [REDACTED] to transfer this file to you.

### Deadlines/Bring ups

- Settlement on this matter was due on 20 October 2011. However, we have requested an extension on settlement date until 3 November 2011

### Background

- This matter relates to a sale by The State of Queensland (represented by Department of Health) to The Uniting Church in Australia Property Trust.
- Although we act for Queensland Health, we get instructions from Department of Public works. The contact person at Public Works is [REDACTED]
- The Contract of Sale was entered into on 28 May 2007. There are special conditions attached to the contract. These special conditions have been satisfied and the only thing that has to happen now is to proceed to settlement.
- Please see [REDACTED] memo dated 11/11/2010 to [REDACTED]. This will give you an indication what had to be done.
- There was a Licence to Enter that was entered into between the parties. This document has been signed. You will need to obtain a copy of the original Licence from the Purchasers solicitor at settlement in order to provide to our client.
- It is a condition in the contract that the parties enter into a lease. This is a lease from the Purchaser to our client (Health). By the settlement date it is a requirement that the Lease documents are signed by the parties.
- The only issues with the Lease is that it requires a Lease plan to be attached to the Lease. The Lease plan that was attached to the proposed lease document that was attached to the contract is different to what it is now.
- There was a need to register a survey plan due to some Council requirements. This has already been lodged and the survey plan was registered. So the Lease plan has to be prepared in accordance with that survey plan.

- Our client instructed that they will pay for the preparation of the lease plan and I have informed the purchasers solicitor's to get the Lease plan prepared so that it can be registered and attached to the Lease. From a settlement point of view you will not need the Lease Plan to be attached. It only needs to be signed by all the parties. However, our client will need the Lease to be registered, so prior to registration you will need to get the Lease Plan.

### Current Status

- There has been delays in getting documents signed by Queensland Health. Queensland Health has to signed the Transfer and Lease documents and send it to us. [REDACTED] at Project Services is the person you need to contact to get the above documents.
- When you get the Transfer and Lease documents, you need to send it to [REDACTED] so that she can get those documents signed by her client in preparation for settlement.
- We have requested an extension settlement date until 3 November 2011. Please follow with [REDACTED] to find out whether their client has consented to the extension.

### Future Action

- You will need to contact [REDACTED] at Project Services and inform that you will be taking care of this matter from this point onwards.
- You will also need to contact [REDACTED] at Norton Rose who is the solicitor for the purchaser and inform that you have the conduct of this matter from now on.
- You need to get settlement figures from [REDACTED] This will have to be provided to [REDACTED] at public works.
- According to the Licence to Enter (Clause 7), I think there is a compensation amount that has to be paid to the purchaser. This will be included in the settlement calculation. I also think that they might include the costs which our client agreed to pay for the preparation of the lease survey plan as well.
- [REDACTED] has informed me that the sum of \$166,631.13 has to go to Project Services and all other monies will have to go to Queensland Health.
- The deposit paid on the contract is held in trust at Crown Law.

### Documents

- The Contract, copy of signed Licence to Enter are all on the file

If you need any clarification on the matter please do not hesitate to speak to me.

[REDACTED]  
Principal Lawyer

SW4

## SEM0203 Apply First Aid

### Descriptor

This course is designed to provide members with the knowledge and skills required to effectively provide first aid response, life support and management of casualties at an incident.

### Nationally accredited course:

- Yes

### Award/s:

Members who successfully complete this course will receive a:

- Statement of Attainment *HLTCPR201A Perform CPR*
- Statement of Attainment *HLTFA201A Provide Basic Emergency Life Support*
- Statement of Attainment *HLTFA301B Apply First Aid*

### Prerequisites:

- SEM0000 SES Induction

### Pre-course requirements:

- Optional completion of the pre-course DVD or workbook flexible learning activities.

### Course delivery:

- This course is designed to be delivered through a variety of methods in an indoor environment.
- Participants have the option of completing the self-paced flexible learning DVD or workbook prior to attending the course.

### Approximate course duration:

- This course is undertaken over approximately 16 hours.
- Where the optional self-paced flexible learning DVD or workbook is used, gap training and assessment is undertaken over approximately four hours.

### Course assessment:

- This course is assessed by completing a variety of practical activities and an Assessment Activity Booklet requiring some written responses.

SW4

## SEM0301 General Rescue

### Descriptor

This course is designed to provide members with the knowledge and skills required to safely and effectively carry out SES rescue operations. The intention of this course is to give you an understanding of the role of a rescuer, some issues you may encounter and how to deal with them.

### Nationally accredited course:

- No

### Award/s:

Members who successfully complete this course will receive a:

- Statement of Achievement SEM0301 General Rescue

### Prerequisites:

- SEM0000 SES Induction

### Pre-course requirements:

- Nil

### Course delivery:

- This course is designed to be delivered through a variety of methods and in a range of environments.

### Approximate course duration:

- This course is undertaken over approximately three hours.

### Course assessment:

- This course is assessed by completing a variety of practical scenario based activities.

SW4

## SEM0302 Casualty Handling

### Descriptor

This course is designed to provide members with the knowledge and skills required to safely and effectively handle casualties during operational situations and when conducting SES training activities.

### Nationally accredited course:

- No

### Award/s:

Members who successfully complete this course will receive a:

- Statement of Achievement SEM0302 Casualty Handling

### Prerequisites:

- SEM0000 SES Induction

### Pre-course requirements:

- Nil

### Course delivery:

- This course is designed to be delivered through a variety of methods and in a range of environments.

### Approximate course duration:

- This course is undertaken over approximately four hours.

### Course assessment:

- This course is assessed by completing a variety of practical activities.

SW4

## SEMo303 Ropes, Knots and Holdfasts

### Descriptor

This course is designed to provide members with the knowledge and skills required to effectively use the appropriate ropes, knots and holdfasts during operational situations and when conducting SES training and activities.

### Nationally accredited course:

- No

### Award/s:

Members who successfully complete this course will receive a:

- Statement of Achievement SEMo303 Ropes, Knots and Holdfasts

### Prerequisites:

- SEMo000 SES Induction

### Pre-course requirements:

- Nil

### Course delivery:

- This course is designed to be delivered through a variety of methods and in a range of environments.

### Approximate course duration:

- This course is undertaken over approximately four hours.

### Course assessment:

- This course is assessed by completing a variety of practical activities.



SW4

## SEM0304 Ladders

### Descriptor

This course is designed to provide members with the knowledge and skills required to safely and effectively inspect, erect and climb a ladder during operational situations and when conducting SES training and activities.

### Nationally accredited course:

- No

### Award/s:

Members who successfully complete this course will receive a:

- Statement of Achievement SEM0304 Ladders

### Prerequisites:

- SEM0000 SES Induction

### Pre-course requirements:

- Nil

### Course delivery:

- This course is designed to be delivered through a variety of methods and in a range of environments.

### Approximate course duration:

- This course is undertaken over approximately two hours.

### Course assessment:

- This course is assessed by completing a variety of practical activities and verbal questions.

SW4

## SEMo320 Emergency Lighting

### Descriptor

This course is designed to provide members with the knowledge and skills required to safely and effectively carry out the establishment of emergency lighting, including generators, during operational situations and when conducting SES training and activities.

### Nationally accredited course:

- No

### Award/s:

Members who successfully complete this course will receive a:

- Statement of Achievement SEMo320 Emergency Lighting

### Prerequisites:

- SEMoooo SES Induction

### Pre-course requirements:

- Nil

### Course delivery:

- This course is designed to be delivered through a variety of methods and in a range of environments.

### Approximate course duration:

- This course is undertaken over approximately three hours.

### Course assessment:

- This course is assessed by completing a variety of practical activities and verbal questions.

SW4

## SEM0325 Protect and Preserve an Incident Scene

### Descriptor

This course is designed to provide members with the knowledge and skills required to effectively carry out the initial assessment at the scene of an incident. Then take action to maintain the safety of all persons at the scene, including SES members. Preserve the scene and record details and information.

The application of this is relevant to SES personnel who are the first to arrive at the scene of an accident or incident.

### Nationally accredited course:

- Yes

### Award/s:

Members who successfully complete this course will receive a:

- Statement of Attainment *PUALAW001B Protect and Preserve an Incident Scene*

### Prerequisites:

- SEM0000 SES Induction

### Pre-course requirements:

- Nil

### Course delivery:

- This course is designed to be delivered through a variety of methods and in a range of environments.

### Approximate course duration:

- This course is undertaken over approximately two hours.

### Course assessment:

- This course is assessed by completing a variety of practical activities and an Assessment Activity Booklet requiring some written responses.

SW4

## SEM0350 Urban Search and Rescue Category 1

### Descriptor

This course is designed to provide members with the knowledge and skills required to effectively identify processes, techniques and hazards associated with collapsed building incidents and Urban Search and Rescue (USAR) task force operations.

### Nationally accredited course:

- No

### Award/s:

Members who successfully complete this course will receive a:

- Statement of Achievement SEM0350 Urban Search and Rescue Category 1

### Prerequisites:

- SEM0000 SES Induction
- SEM0001 Volunteering in the SES
- SEM0010 SES Safety
- SEM0202 Provide Basic Emergency Life Support (or SEM0203 Apply First Aid)
- SEM0301 General Rescue
- SEM0302 Casualty Handling

### Pre-course requirements:

- A pre-course DVD including theory assessment must be completed; results printed out and submitted prior to the commencement of the course.

### Course delivery:

- This course is designed to be delivered through a variety of methods and in a range of environments.

### Approximate course duration:

- This course is undertaken over approximately four hours.

### Course assessment:

- This course is assessed by completing a variety of practical scenario based activities as well as the submission of the theory assessment, conducted on the DVD, prior to the course.

## SEM0401 Road Crash Rescue

### Descriptor

This course is designed to provide members with the knowledge and skills required to safely and effectively carry out specific tasks and roles at the scene of a road crash incident during operational situations and when conducting SES training activities.

### Nationally accredited course:

- Yes

### Award/s:

Members who successfully complete this course will receive a:

- Statement of Attainment *PUASAR002B Undertake Road Accident Rescue*

### Prerequisites:

- SEM0000 SES Induction
- SEM0001 Volunteering in the SES
- SEM0010 SES Safety
- SEM0203 Apply First Aid
- SEM0301 General Rescue
- SEM0302 Casualty Handling
- SEM0320 Emergency Lighting

### Pre-course requirements:

- Nil

### Course delivery:

- This course is designed to be delivered through a variety of methods and in a range of environments.

### Approximate course duration:

- This course is undertaken over approximately four days and can incorporate a night time component.

### Course assessment:

- This course is assessed by completing a variety of practical and written activities.

SW4

## SEM0502 Land Search

### Descriptor

This course is designed to provide members with the knowledge and skills required to safely and effectively carry out land search tasks as well as protecting and preserving an incident scene during operational situations and when conducting SES training activities.

### Nationally accredited course:

- Yes

### Award/s:

Members who successfully complete this course will receive a:

- Statement of Attainment *PUALAW001B Protect and Preserve an Incident Scene*
- Statement of Attainment *PUASAR008B Search as a Member of a Land Search Team*

### Prerequisites:

- SEM0000 SES Induction

### Pre-course requirements:

- Nil

### Course delivery:

- This course is designed to be delivered through a variety of methods and in a range of environments.

### Approximate course duration:

- This course is undertaken over approximately 12 hours and incorporates a night time component.

### Course assessment:

- This course is assessed by completing a variety of practical activities and an Assessment Activity Booklet requiring some written responses.

SW4

## SEM0510 Air Observer

### Descriptor

This course is designed to provide members with the knowledge and skills required to safely and effectively carry out an air search operation and to work in an aviation environment.

### Nationally accredited course:

- Yes

### Award/s:

Members who successfully complete this course will receive a:

- Statement of Attainment *PUAAMS001B Work in an Aviation Environment*
- Statement of Attainment *PUAAMS002B Search as a Member of an Air Search*

### Prerequisites:

- SEM0000 SES Induction

### Pre-course requirements:

Members must:

- live within one hour of a designated airport
- have good vision in both eyes
- not suffer from motion sickness
- be able to sit in a confined aircraft for a lengthy period of time.

It is **highly desirable** that members hold a current passport in the event of any overseas stopovers.

### Course delivery:

- This course is designed to be delivered through a variety of methods and in a range of environments.

### Approximate course duration:

- This course is undertaken over approximately seven hours and includes a training flight.

### Course assessment:

- This course is assessed by completing an air observer flight in a small aircraft and a written component.

SW4

## SEMo601 Storm Damage Operations

### Descriptor

This course is designed to provide members with the knowledge and skills required to safely and effectively carry out temporary repairs to damaged buildings and protect property from flood and water damage.

### Nationally accredited course:

- No

### Award/s:

Members who successfully complete this course will receive a:

- Statement of Achievement SEMo601 Storm Damage Operations

### Prerequisites:

- SEMo000 SES Induction
- SEMo303 Ropes, Knots and Holdfasts

### Pre-course requirements:

- Nil

### Course delivery:

- This course is designed to be delivered through a variety of methods and in a range of environments.

### Approximate course duration:

- This course is undertaken over approximately eight hours.

### Course assessment:

- This course is assessed by completing a variety of practical activities and verbal questions.



SW4

## SEMo602 Working Safely at Heights

### Descriptor

This course is designed to provide members with the knowledge and skills required to safely and effectively carry out temporary roof repair while operating on an approved SES height safety system during operations and when conducting SES training activities.

### Nationally accredited course:

- No

### Award/s:

Members who successfully complete this course will receive a:

- Statement of Achievement SEMo602 Working Safely at Heights

### Prerequisites:

- SEMo000 SES Induction
- SEMo001 Volunteering in the SES
- SEMo010 SES Safety
- SEMo201 Perform CPR
- SEMo303 Ropes, Knots and Holdfasts
- SEMo304 Ladders
- SEMo601 Storm Damage Operations

### Pre-course requirements:

- The ability to conduct work at heights.
- A reasonable level of physical mobility is required.

### Course delivery:

- This course is designed to be delivered through a variety of methods and in a range of environments.

### Approximate course duration:

- This course is undertaken over approximately eight hours.

### Course assessment:

- This course is assessed by completing a variety of practical and written activities.

SW4

## SEMo604 Working Safely at Heights – Ground Crew

### Descriptor

This course is designed to provide members with the knowledge and skills required to safely and effectively carry out ground crew support for members working at height during operational situations and when conducting SES training activities.

Upon the successful completion of this course the participant will be able to conduct all functions within a height safety team except for the work actually undertaken at height.

### Nationally accredited course:

- No

### Award/s:

Members who successfully complete this course will receive a:

- Statement of Achievement SEMo604 Working Safely at Heights – Ground Crew

### Prerequisites:

- SEMo000 SES Induction
- SEMo001 Volunteering in the SES
- SEMo010 SES Safety
- SEMo201 Perform CPR
- SEMo303 Ropes, Knots and Holdfasts
- SEMo304 Ladders
- SEMo601 Storm Damage Operations

### Pre-course requirements:

- A reasonable level of physical mobility is required.

### Course delivery:

- This course is designed to be delivered through a variety of methods and in a range of environments.

### Approximate course duration:

- This course is undertaken over approximately eight hours.

### Course assessment:

- This course is assessed by completing a variety of practical and written activities.

SW4

## SEM0701 Chainsaw Operations Level 1

### Descriptor

This course is designed to provide members with the knowledge and skills required to safely and effectively operate and maintain a chainsaw while trimming and cross cutting fallen trees during operational situations and when conducting SES training activities.

### Nationally accredited course:

- Yes

### Award/s:

Members who successfully complete this course will receive a:

- Statement of Attainment *FPICOT2221A Trim and Cross Cut Felled Trees*

### Prerequisites:

- SEM0000 SES Induction
- SEM0001 Volunteering in the SES
- SEM0010 SES Safety
- SEM0201 Perform CPR

### Pre-course requirements:

- A reasonable level of physical mobility is required.

### Course delivery:

- This course is designed to be delivered through a variety of methods and in a range of environments.

### Approximate course duration:

- This course is undertaken over approximately two days.

### Course assessment:

- This course is assessed by completing a variety of practical activities and an Assessment Activity Booklet requiring some written responses.

S W 4

## SEMo801 Traffic Control Operations

### Descriptor

This course is designed to provide members with the knowledge and skills required to legally, safely and effectively control traffic under the direction of the appropriate authority during operational incidents.

### Nationally accredited course:

- No

### Award/s:

Members who successfully complete this course will receive a:

- Statement of Achievement SEMo801 Traffic Control Operations

### Prerequisites:

- SEMo000 SES Induction
- SEMo001 Volunteering in the SES
- SEMo010 SES Safety
- SEMo021 Operate Communications Equipment
- SEMo201 Perform CPR
- SEMo320 Emergency Lighting

### Pre-course requirements:

- Participants must be a minimum of 18 years of age and have held an open or provisional drivers licence for a minimum of 12 months continuously within the past five years.
- Physical ability to stand for extended periods of time.
- Good vision, to be able to clearly distinguish a vehicle at a distance of 150 metres.

### Course delivery:

- This course is designed to be delivered through a variety of methods and in a range of environments.

### Approximate course duration:

- This course is undertaken over approximately six hours and incorporates a night time component.

### Course assessment:

- This course is assessed by completing a variety of practical and written activities.

5 W 4

## SEM0901 Vertical Mobility

### Descriptor

This course is designed to provide members with the knowledge and skills required to safely and effectively undertake vertical mobility tasks associated with vertical rescues during operational situations and when conducting SES training activities.

### Nationally accredited course:

- No

### Award/s:

Members who successfully complete this course will receive a:

- Statement of Achievement SEM0901 Vertical Mobility

### Prerequisites:

- SEM0000 SES Induction
- SEM0001 Volunteering in the SES
- SEM0010 SES Safety
- SEM0202 Provide Basic Emergency Life Support (or SEM0203 Apply First Aid)
- SEM0301 General Rescue
- SEM0302 Casualty Handling
- SEM0303 Ropes, Knots and Holdfasts
- SEM0304 Ladders
- SEM0602 Working Safely at Heights

### Pre-course requirements:

- The ability to conduct work at heights.
- A reasonable level of physical and mental fitness is required.

### Course delivery:

- This course is designed to be delivered through a variety of methods and in a range of environments.

### Approximate course duration:

- This course is undertaken over approximately two days and incorporates a night time component.

### Course assessment:

- This course is assessed by completing a variety of practical activities and verbal questions.

## SEM0902 Vertical Rescue

### Descriptor

This course is designed to provide members with the knowledge and skills required to safely and effectively carry out the rescue of persons from and/or through a vertical environment during operational situations and when conducting SES training activities.

### Nationally accredited course:

- No

### Award/s:

Members who successfully complete this course will receive a:

- Statement of Achievement SEM0902 Vertical Rescue

### Prerequisites:

- SEM0000 SES Induction
- SEM0001 Volunteering in the SES
- SEM0010 SES Safety
- SEM0202 Provide Basic Emergency Life Support (or SEM0203 Apply First Aid)
- SEM0301 General Rescue
- SEM0302 Casualty Handling
- SEM0303 Ropes, Knots and Holdfasts
- SEM0304 Ladders
- SEM0601 Storm Damage Operations
- SEM0602 Working Safely at Heights
- SEM0901 Vertical Mobility

### Pre-course requirements:

- The ability to conduct work at heights.
- A reasonable level of physical and mental fitness is required.

### Course delivery:

- This course is designed to be delivered through a variety of methods and in a range of environments.

### Approximate course duration:

- This course is undertaken over approximately four days and incorporates a night time component.

### Course assessment:

- This course is assessed by completing a variety of practical activities and verbal questions.

## SEM1005 Briefings and Debriefings

### Descriptor

This course is designed to provide members with the knowledge and skills required to effectively carry out briefing and/or debriefing sessions during operational situations and when conducting SES training and activities.

### Nationally accredited course:

- Yes

### Award/s:

Members who successfully complete this course will receive a:

- Statement of Attainment *PUAOPE004B Conduct Briefings and Debriefings*

### Prerequisites:

- SEM0000 SES Induction

### Pre-course requirements:

- A reasonable level of literacy is necessary for this course as participants are required to perform functions that utilise these skills.

### Course delivery:

- This course is designed to be delivered through a variety of methods and in a range of environments.

### Approximate course duration:

- This course is undertaken over approximately four hours.

### Course assessment:

- This course is assessed by completing a variety of practical activities and an Assessment Activity Booklet requiring some written responses.

5W4

## **SEM2001 Introduction to Queensland's Disaster Management Arrangements Induction**

### **Descriptor**

This course is designed to provide members with an overview of the Queensland disaster management arrangements used by SES and other emergency service agencies.

It also provides an introduction to the key disaster management concepts and principals used in Australia and specifically within Queensland.

### **Nationally accredited course:**

- No

### **Award/s:**

Members who successfully complete this course will receive a:

- Statement of Attendance SEM2001 Introduction to Queensland's Disaster Management Arrangements Induction

### **Prerequisites:**

- SEM0000 SES Induction

### **Pre-course requirements:**

- Nil

### **Course delivery:**

- This course is designed to be delivered through a variety of methods in an indoor environment.

### **Approximate course duration:**

- This course is undertaken over approximately two hours.

### **Course assessment:**

- This course has no assessment activity.



SW4

## SEM3110 Work in an Emergency Operations Centre

### Descriptor

This course is designed to provide members with the knowledge and skills required to effectively carry out supportive roles to the management team within an Emergency Operation Centre during operational situations and when conducting SES training and activities.

### Nationally accredited course:

- Yes

### Award/s:

Members who successfully complete this course will receive a:

- Statement of Attainment *PUASES012A Work as a Team Member in an Emergency Operations Centre*

### Prerequisites:

- SEM0000 SES Induction

### Pre-course requirements:

- A reasonable level of literacy is necessary for this course as participants are required to perform functions that utilise these skills.

### Course delivery:

- This course is designed to be delivered through a variety of methods and in a range of environments.

### Approximate course duration:

- This course is undertaken over approximately eight hours.

### Course assessment:

- This course is assessed by completing a variety of practical activities and an Assessment Activity Booklet requiring some written responses.

## SEM3111 Introduction to Incident Management

### Descriptor

This course is designed to provide members with an introduction to the incident management system used by SES and other emergency service agencies.

It also provides information and understanding of the command and control methodologies in field operations and how the SES organisation functions under operational conditions.

### Nationally accredited course:

- No

### Award/s:

Members who successfully complete this course will receive a:

- Statement of Attendance SEM3111 Introduction to Incident Management

### Prerequisites:

- SEM0000 SES Induction

### Pre-course requirements:

- Nil

### Course delivery:

- This course is designed to be delivered through a variety of methods in an indoor environment.

### Approximate course duration:

- This course is undertaken over approximately four hours.

### Course assessment:

- This course has no assessment activity.



5W4

SW4

EMQTDPC00139

